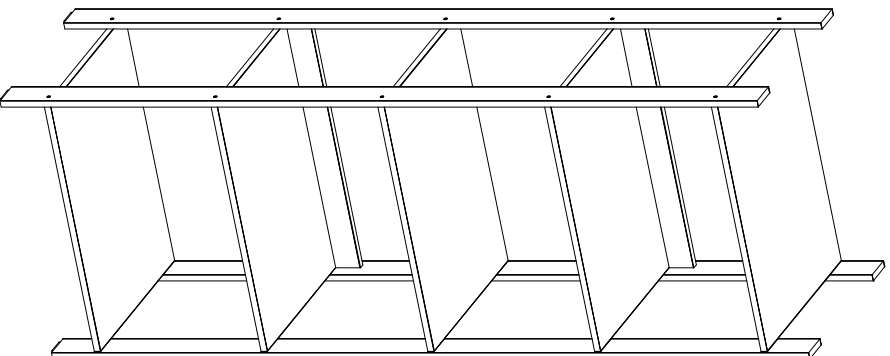


haos

ESQUEMA DE MONTAGEM

6054 - Estante Livreiro Modular Vivace



Conservação do Móvel | Instruções de Montagem



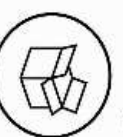
Não utilizar produtos químicos ou abrasivos



Limpeza com pano umedecido com água

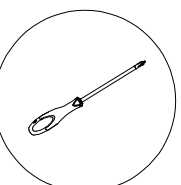


Pessoas necessárias para montagem

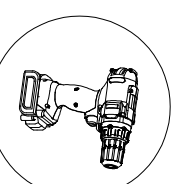


Forrar o chão com embalagem do produto

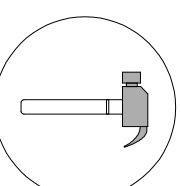
Ferramentas necessárias na montagem (Ferramentas não são fornecidas)



CHAVE PHILIPS



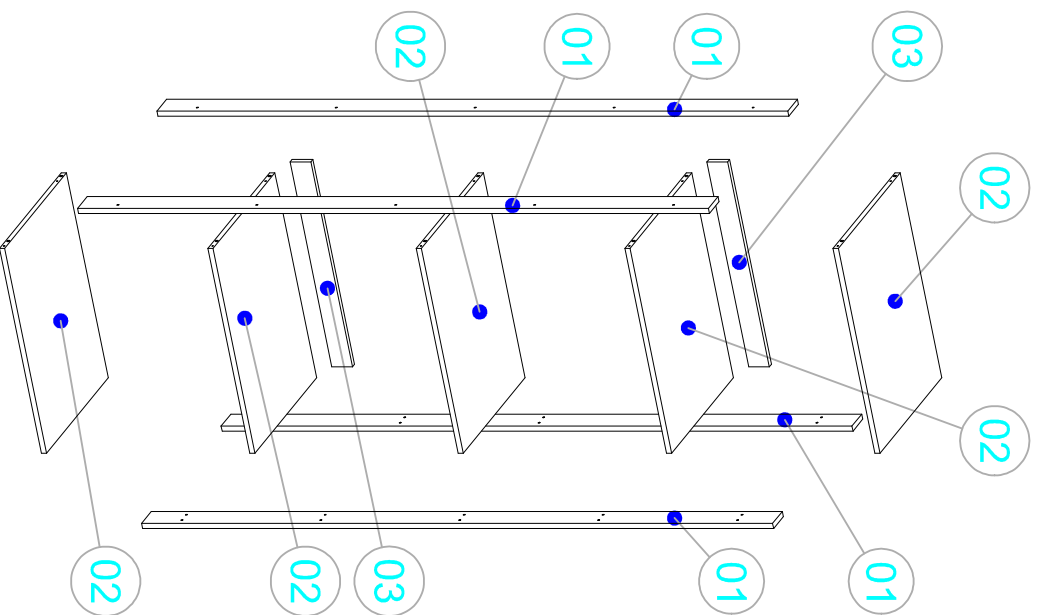
PARAFUSADEIRA



MARTELO

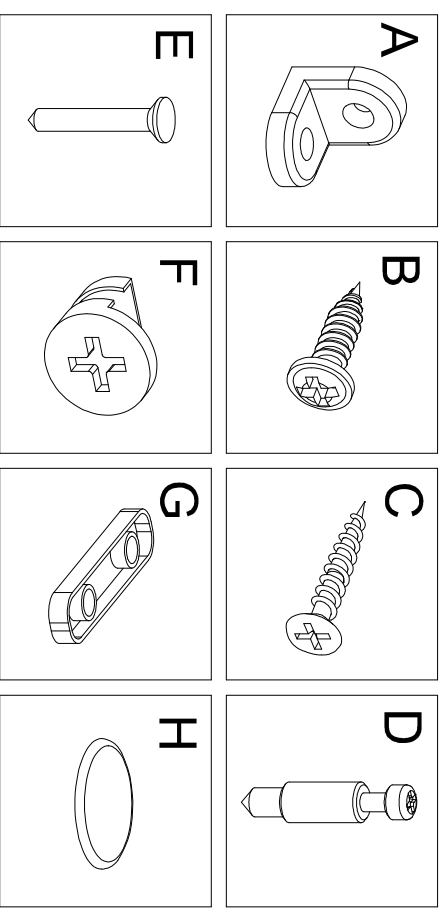
LISTA DE PEÇAS

CÓDIGO	NOME	QTD	COMPRIMENTO	LARGURA	ESPESSURA	MATERIAL
1	TRAVESSA LATERAL	4	1830	70	15	MDP
2	PRATELEIRA	5	606	448	15	MDP
3	TRAVESSA TRASEIRA	2	605	60	15	MDP

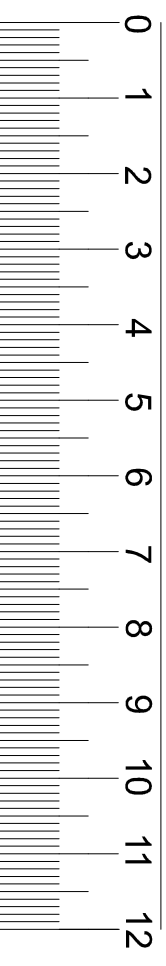


LISTA DE ACESSÓRIOS

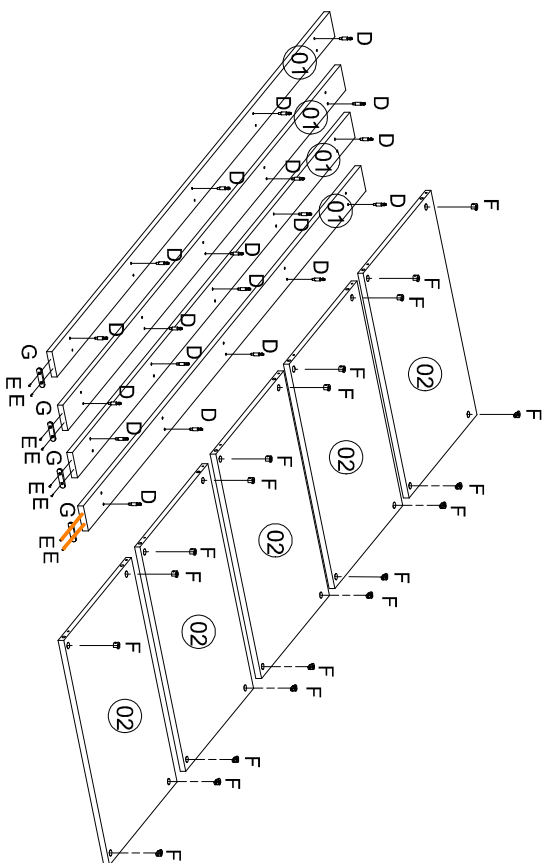
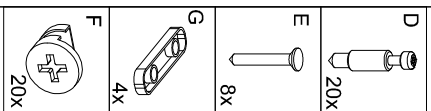
CÓDIGO	DESCRIÇÃO	QTD
A	CANTONEIRA 18X18MM	8
B	PARAFUSO 4X12MM CABEÇA FLANGEADA	16
C	PARAFUSO 4X40MM CABEÇA CHATA	20
D	PINO MINIFIX	20
E	PREGO 12X12 C CABEÇA	8
F	TAMBOR MINIFIX 15Ø	20
G	SAPATA DESLIZADORA 50X12MM	4
H	TAPA-FURO ADESIVO 12MM	20



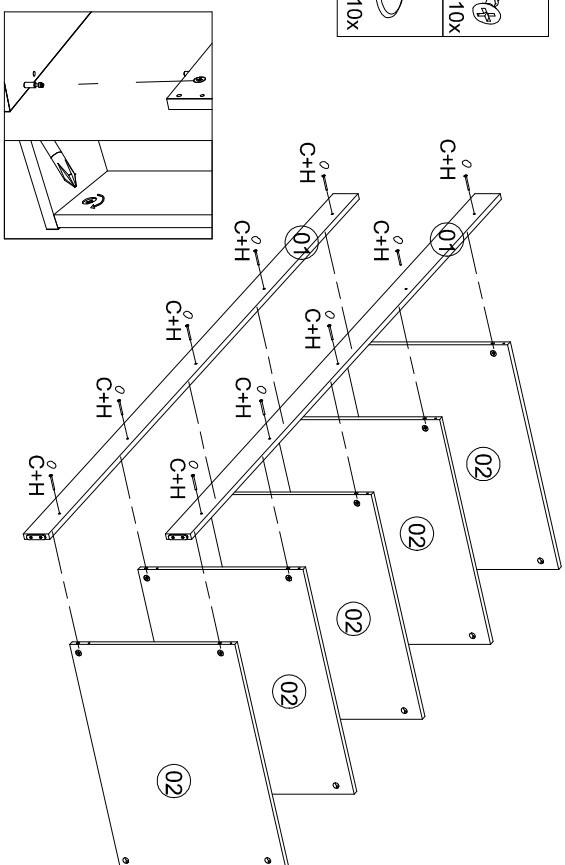
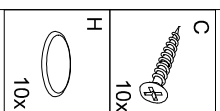
Utilizar a régua para medir as ferragens



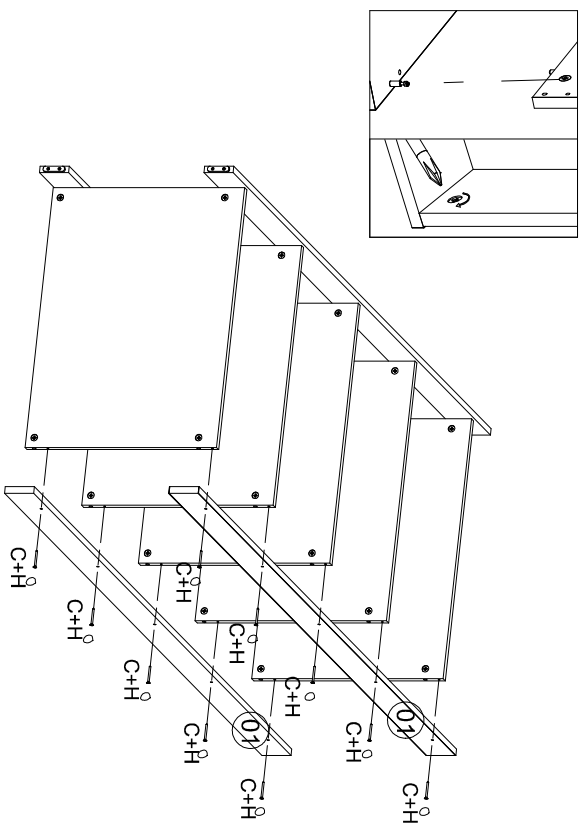
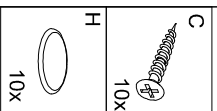
01



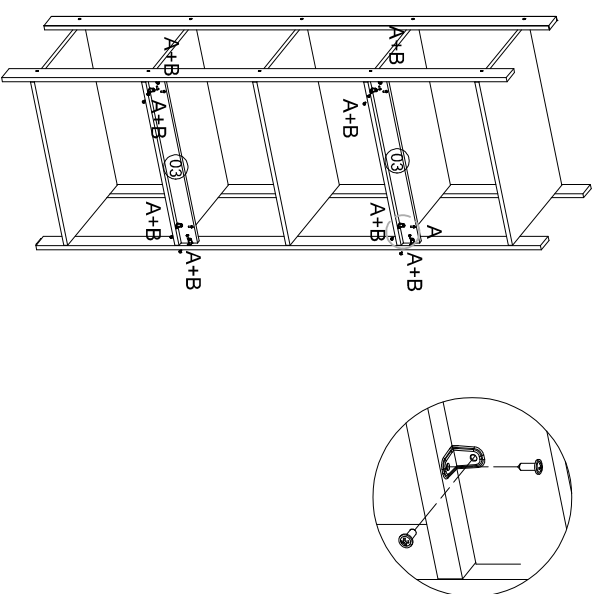
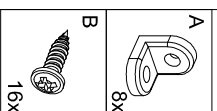
02



03



04



1830 mm

454 mm

636 mm

