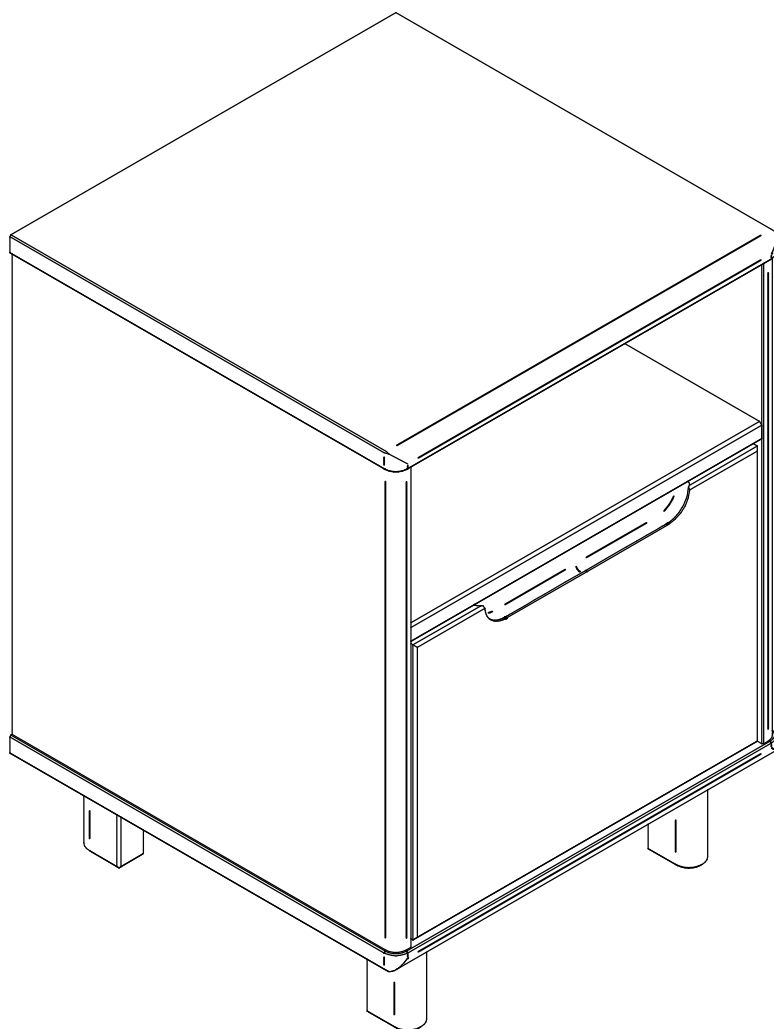
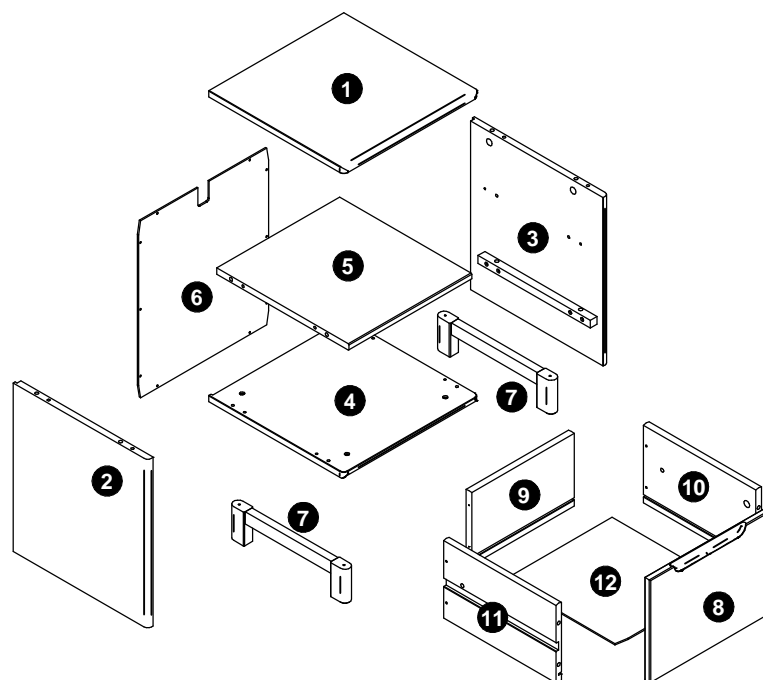


Mesa de cabeceira 1 gaveta

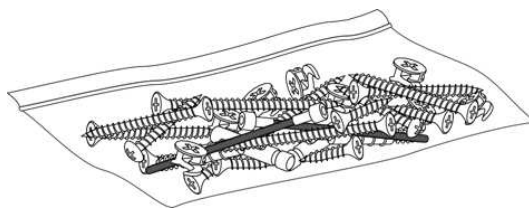


Sua mesa de cabeceira 1 gaveta



Ref	Descrição	Dimensão	Qtd.
❶	Tampo	360 x 360 x 35mm	1
❷	Lado esquerdo	390 x 359 x 33mm	1
❸	Lado direito	390 x 359 x 33mm	1
❹	Base	360 x 360 x 45mm	1
❺	Prateleira	328 x 353 x 15mm	1
❻	Painel traseiro	409 x 347 x 3mm	1
❼	Pés montados	310 x 80 x 25mm	2
❽	Frente gaveta	322 x 239 x 15mm	1
❾	Traseiro gaveta	274 x 170 x 15mm	1
❿	Lado direito gaveta	300 x 182 x 15mm	1
⓫	Lado esquerdo gaveta	300 x 182 x 15mm	1
⓬	Fundo gaveta	301 x 288 x 3mm	1

Ferragens



Ferragens fornecidas (tamanho real)

Ref	Descrição	Dimensão	Qtd.	mm
				0 10 20 30 40 50 60 70
A	Cavilha de madeira	8 x 40mm	2	
B	Cavilha de madeira	8 x 30mm	2	
C	Cavilha de madeira	6 x 30mm	12	
D	Tambor minifix	9 x 14mm	8	
E	Parafuso minifix	3,5 x 35mm	8	
F	Parafuso	M4 x 12mm	1	
G	Parafuso	5 x 50mm	4	
H	Parafuso	3 x 16mm	10	
I	Parafuso	M4 x 28mm	4	
J	Parafuso	3,5 x 30mm	4	
K	Parafuso	1/4 x 30mm	4	

Ferragens fornecidas (tamanho menor)

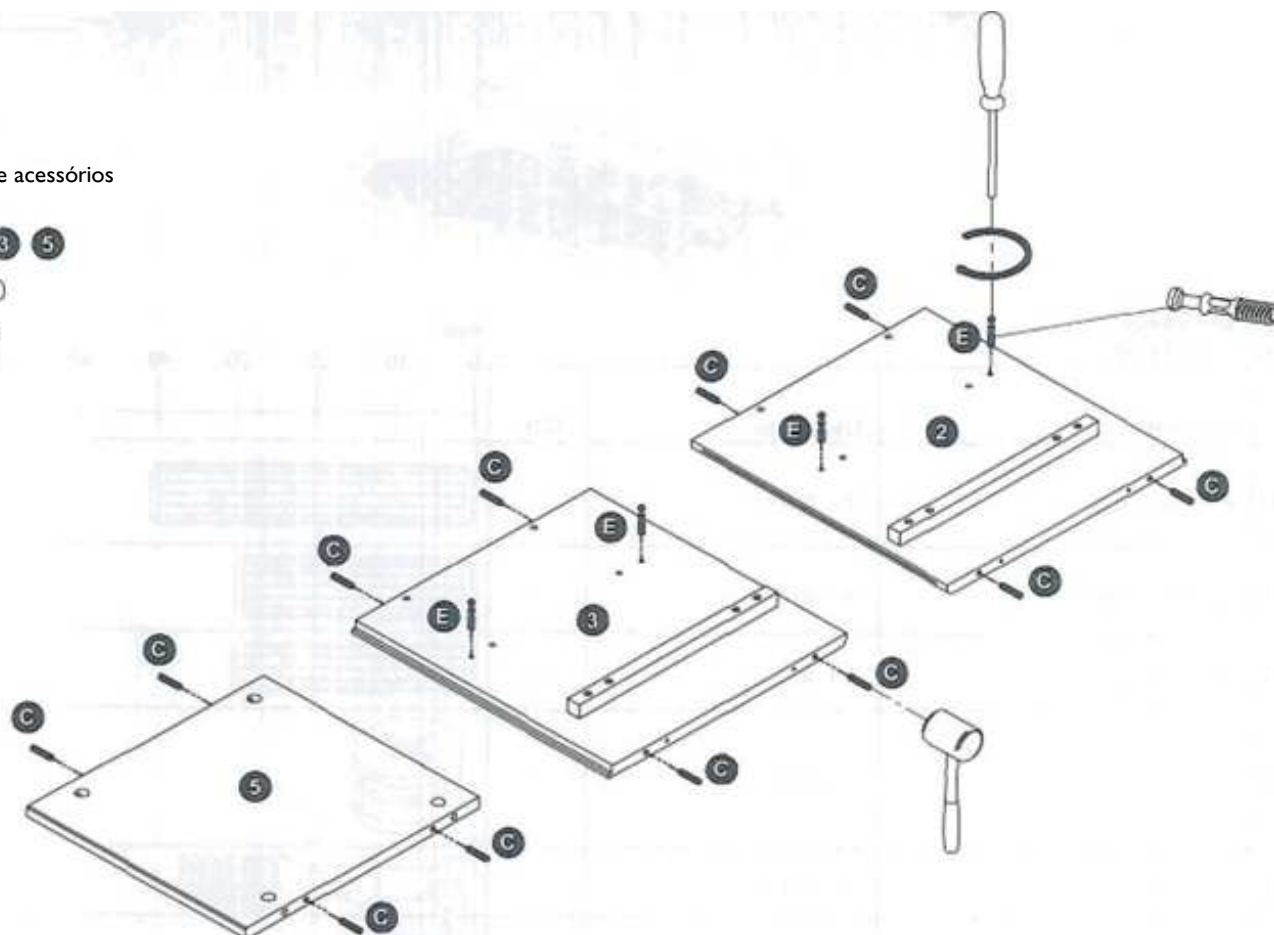
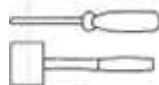
Ref	Description	Dimension	Qty	
L	Cantoneira L para fixar na parede		1	
M	Cunha plástica		3	

Montagem do produto

Passo 1

Peça, encaixe e acessórios

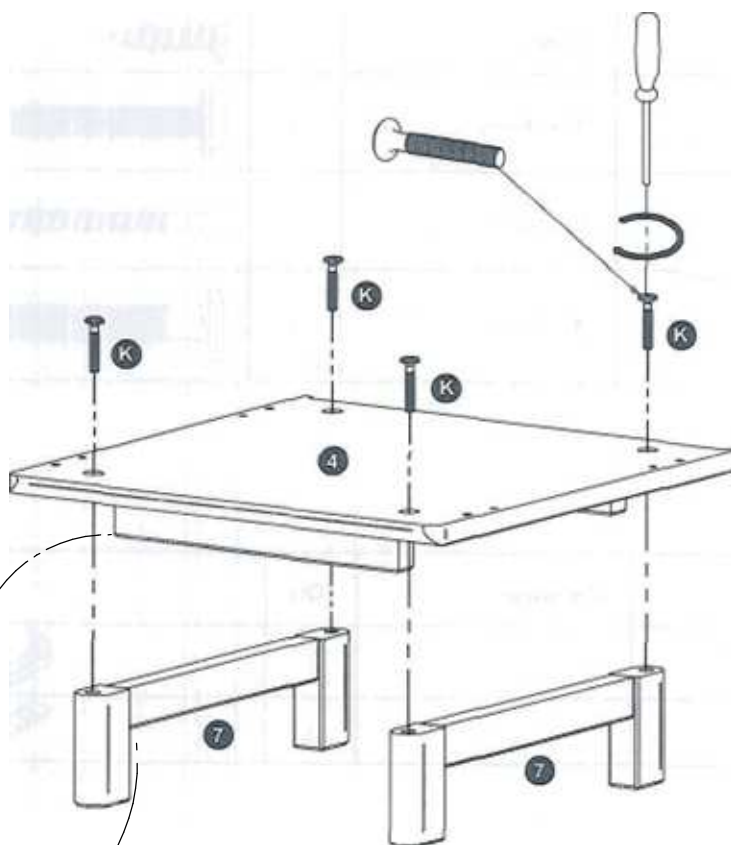
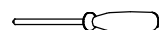
C E 2 3 5



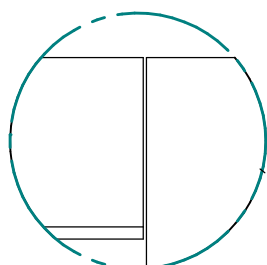
Passo 2

Peça, encaixe e acessórios

K 4 7



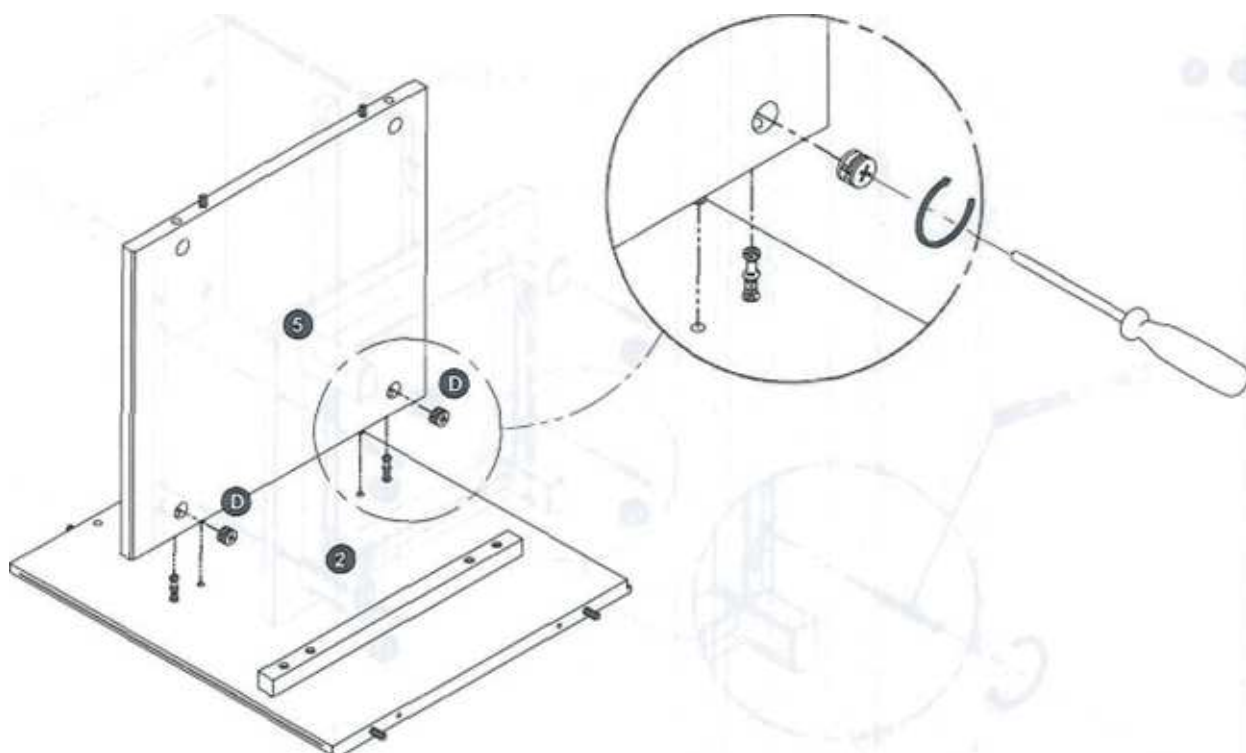
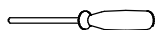
Após a montagem, poderá haver um pequeno espaço entre a travessa horizontal e a base do produto. Isso é intencional para facilitar a montagem e evitar danos às peças.



Passo 3

Peça, encaixe e acessórios

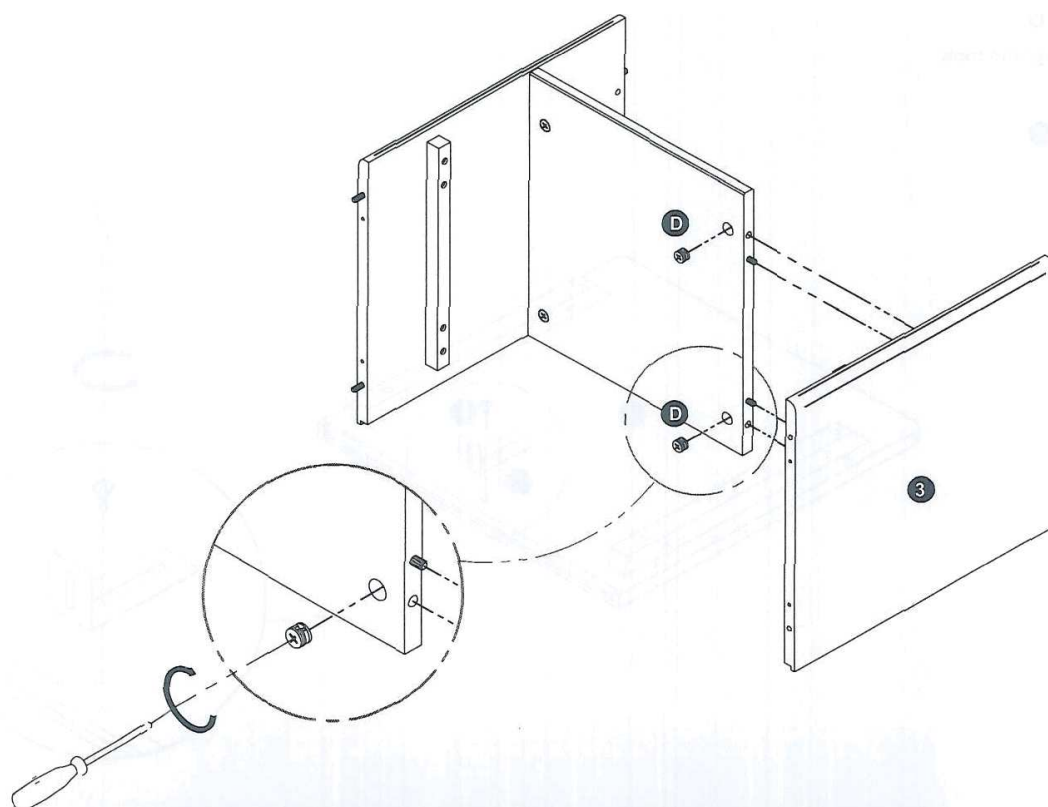
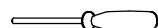
D 2 5



Passo 4

Peça, encaixe e acessórios

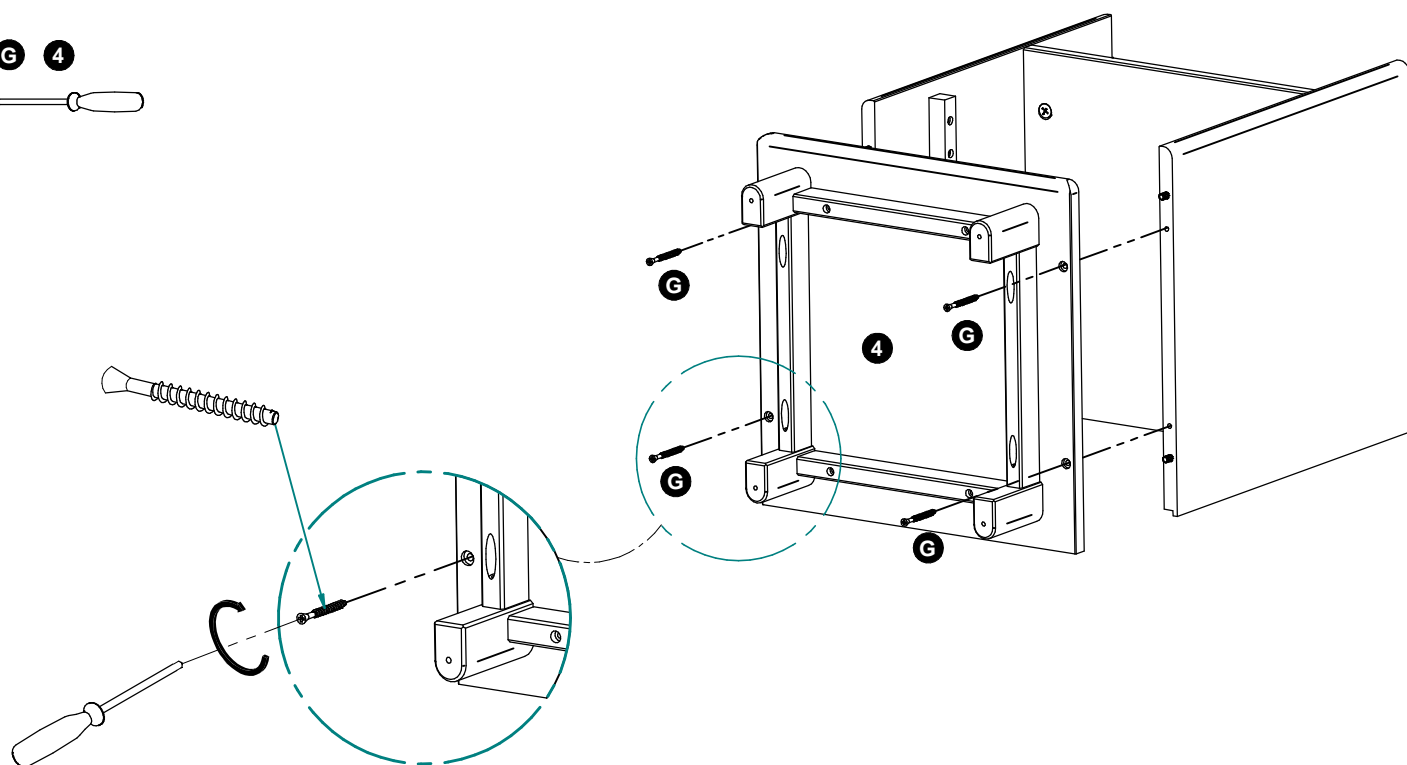
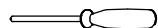
D 3



Passo 5

Peça, encaixe e acessórios

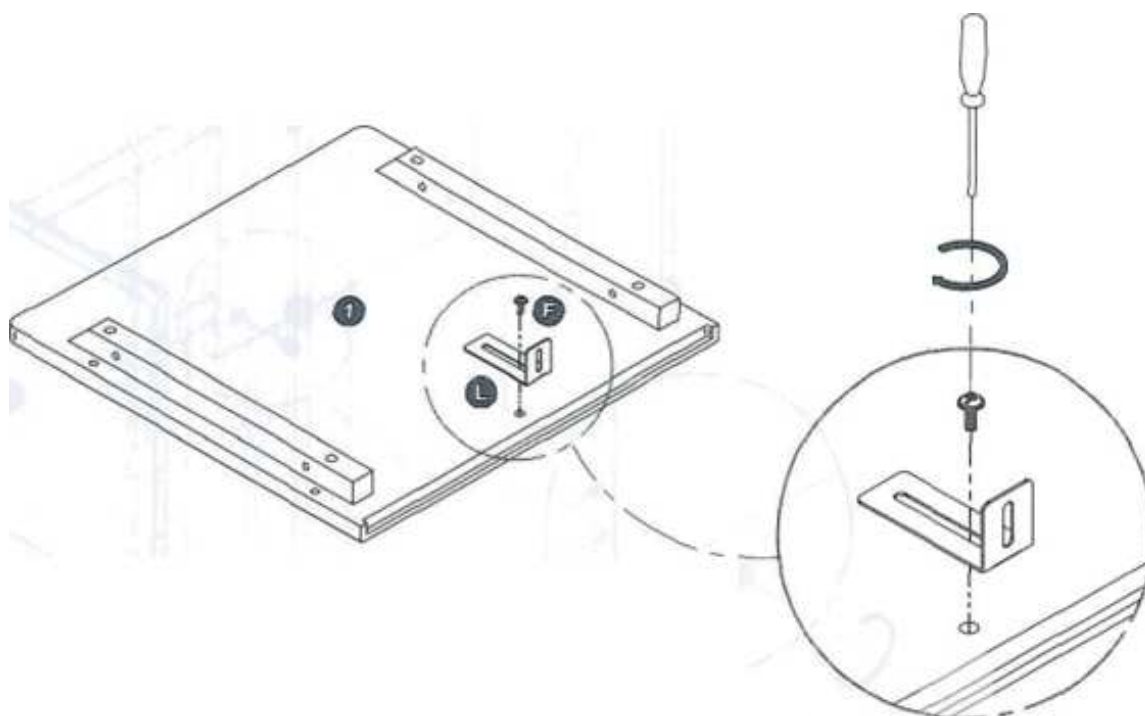
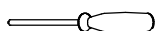
G 4



Passo 6

Peça, encaixe e acessórios

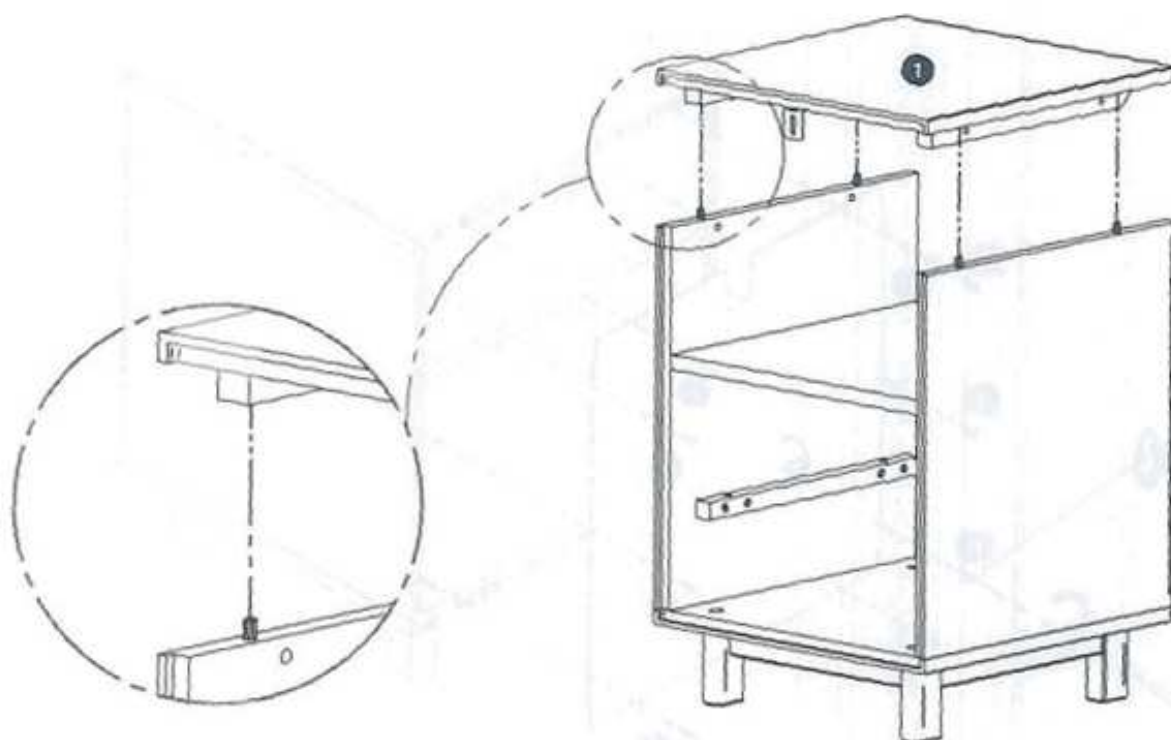
F L 1



Passo 7

Peça e encaixe

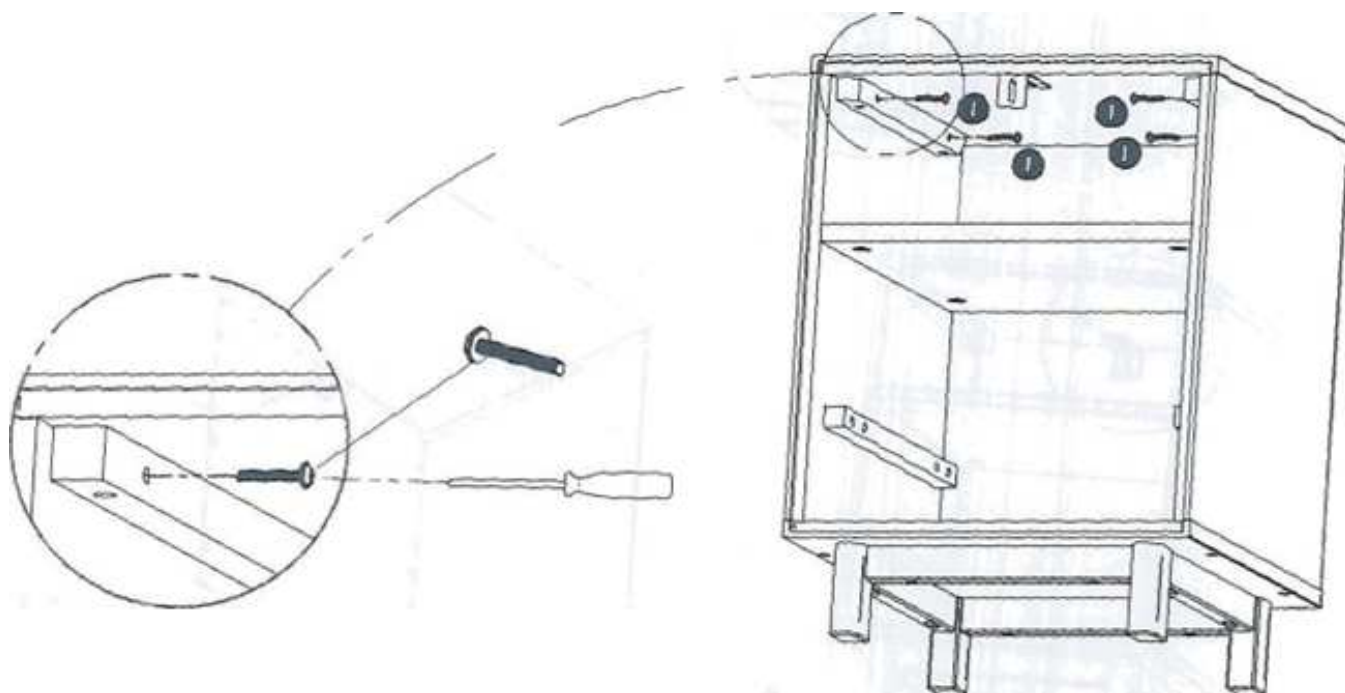
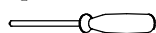
1



Passo 8

Peça, encaixe e acessórios

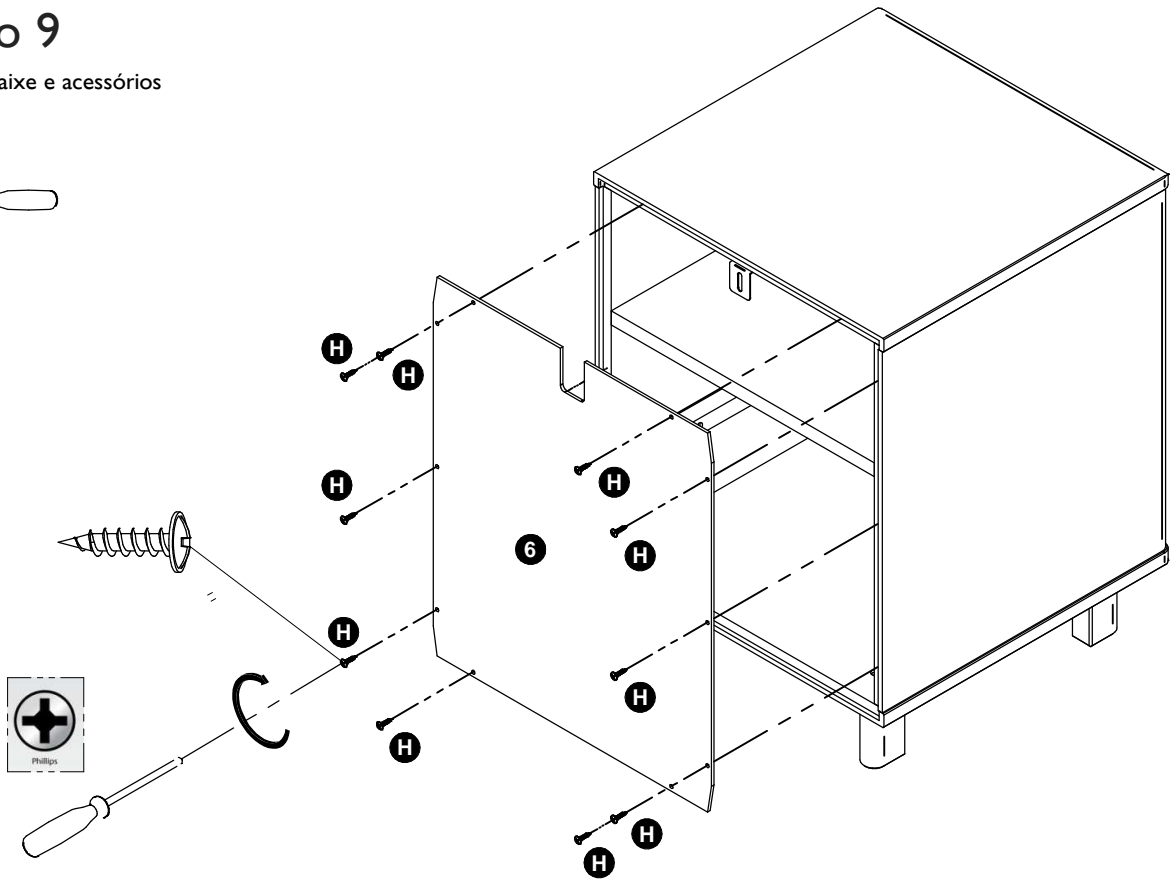
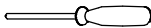
1



Passo 9

Peça, encaixe e acessórios

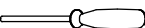
H 6



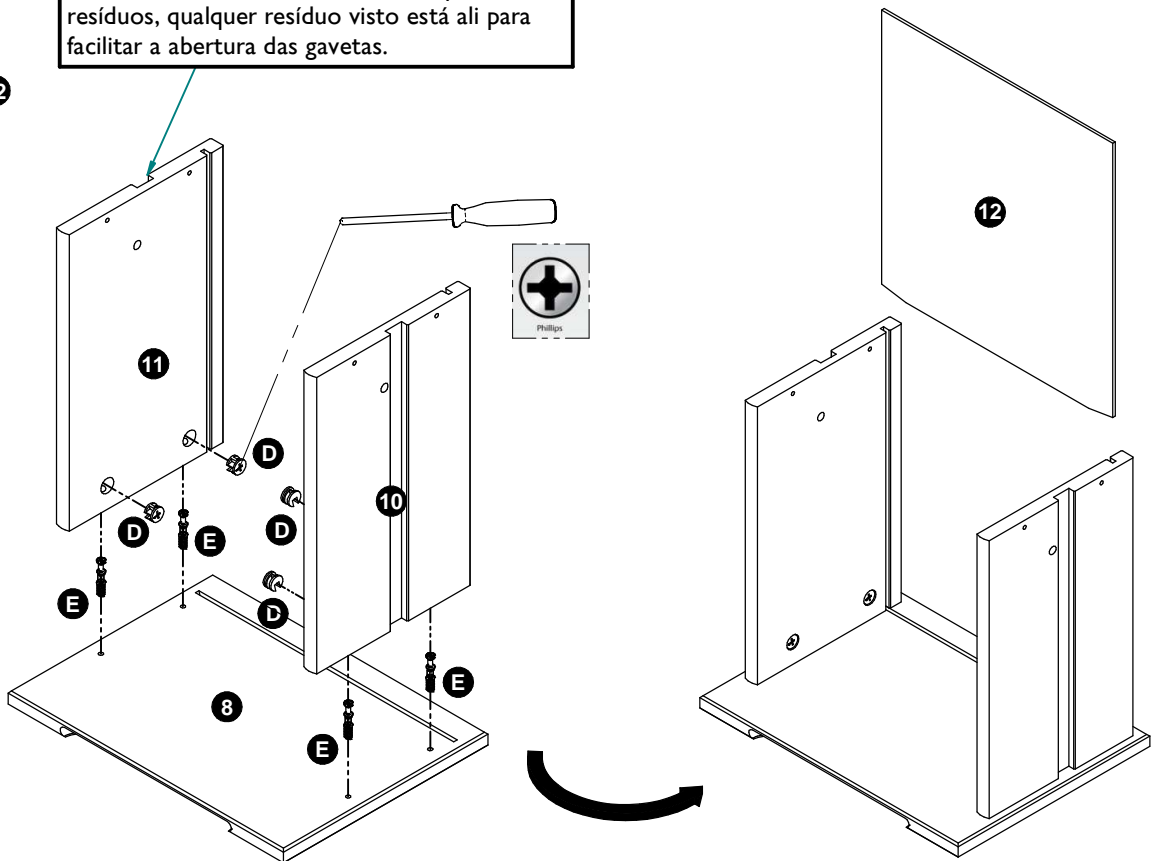
Passo 10

Peça, encaixe e acessórios

D E 8 10 11 12



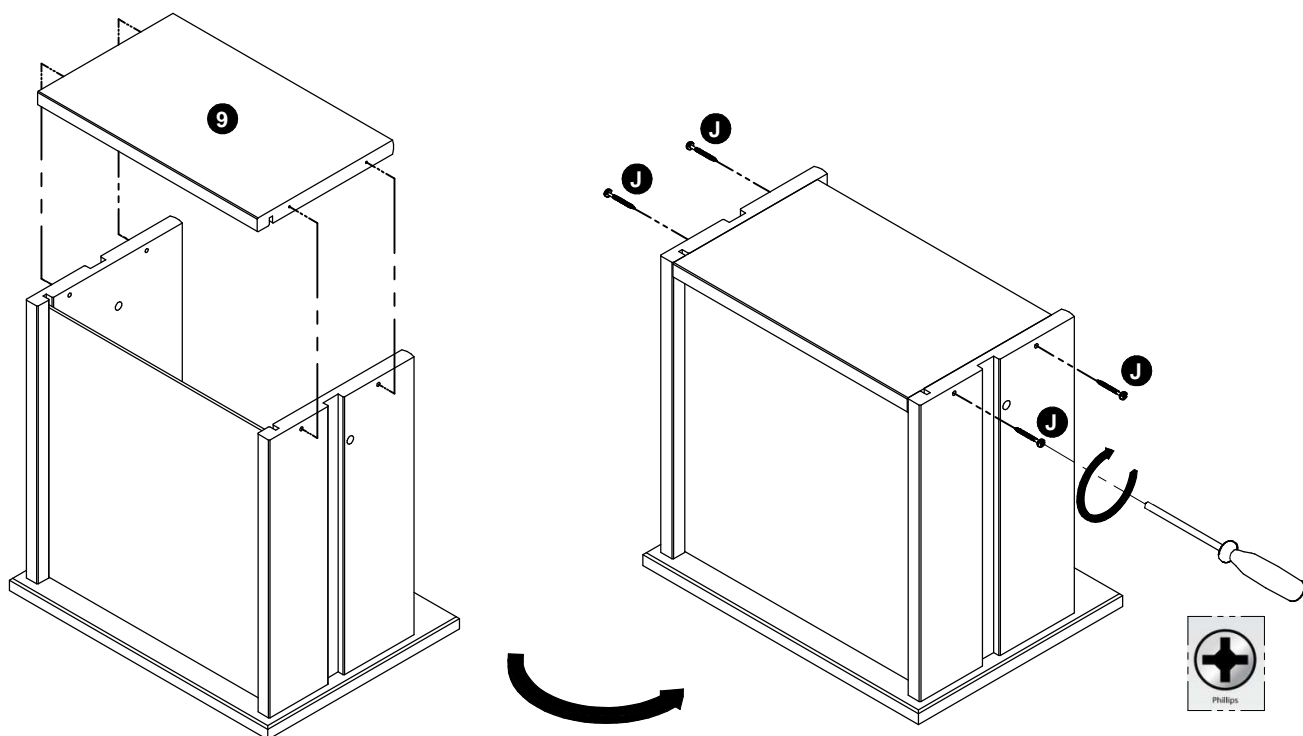
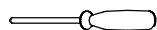
As corrediças são encaixadas e você poderá ver resíduos, qualquer resíduo visto está ali para facilitar a abertura das gavetas.



Passo 11

Peça, encaixe e acessórios

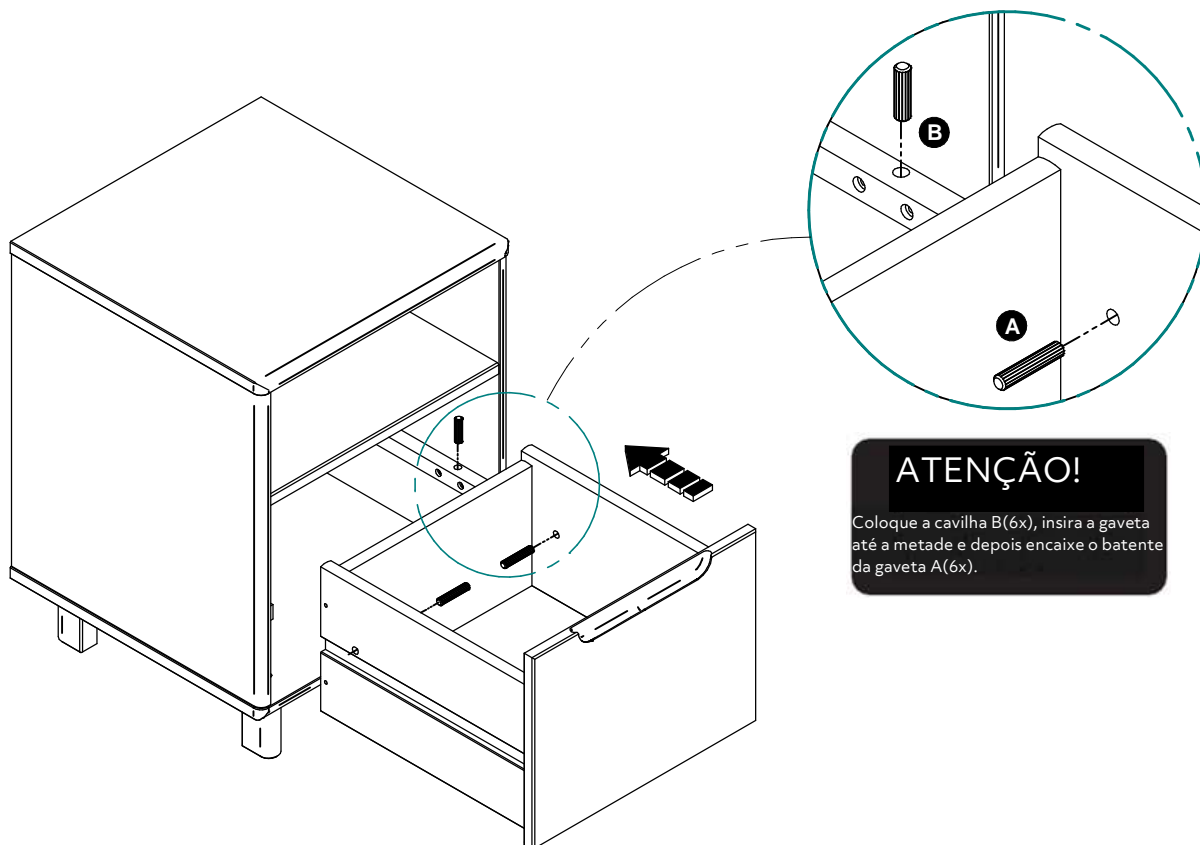
J 9



Passo 12

Peça e encaixe

A B



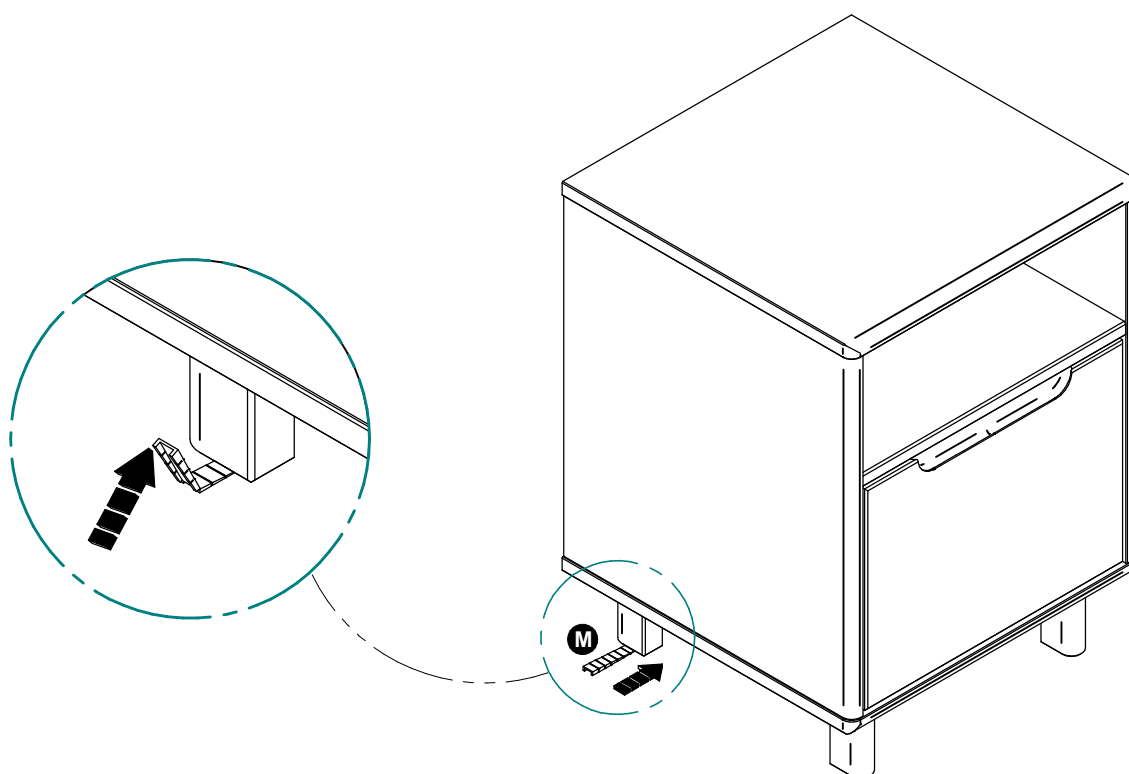
ATENÇÃO!

Coloque a cavilha B(6x), insira a gaveta até a metade e depois encaixe o batente da gaveta A(6x).

Passo 13

Peça e encaixe

M



Step 14

Peças, encaixe e acessórios

