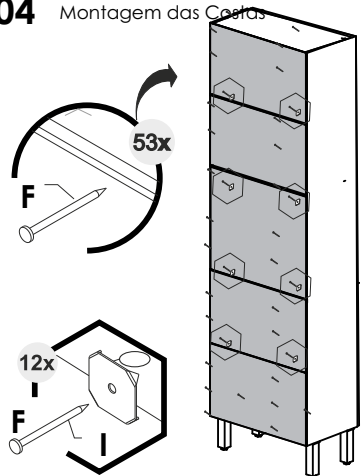
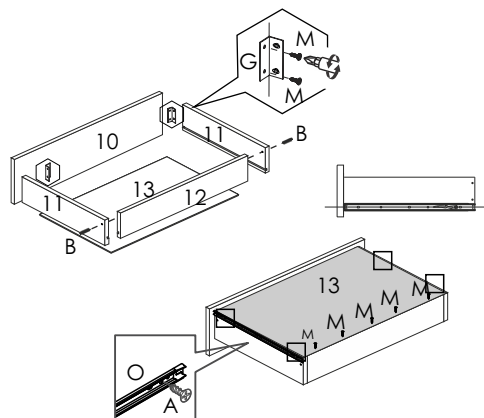


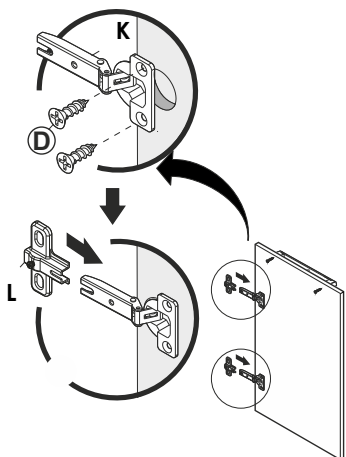
04 Montagem das Costas



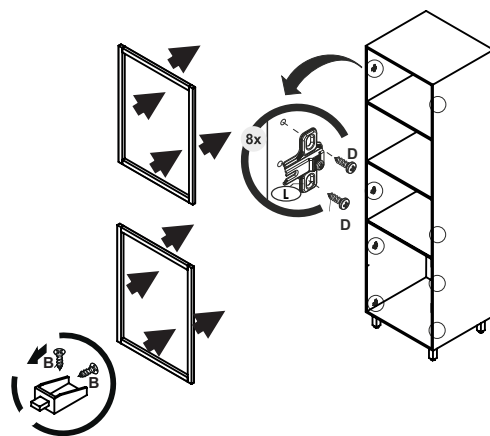
05 Montagem das Gavetas



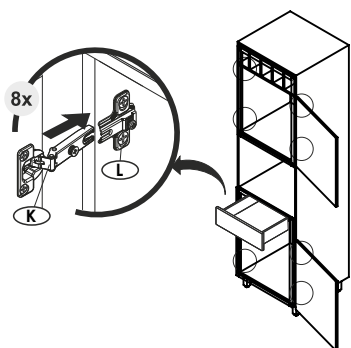
06 Montagem das Portas



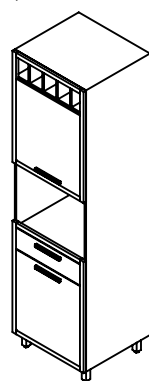
07 Fixação dos Calço da Dobradiça



08 Fixação das Portas e Gaveta



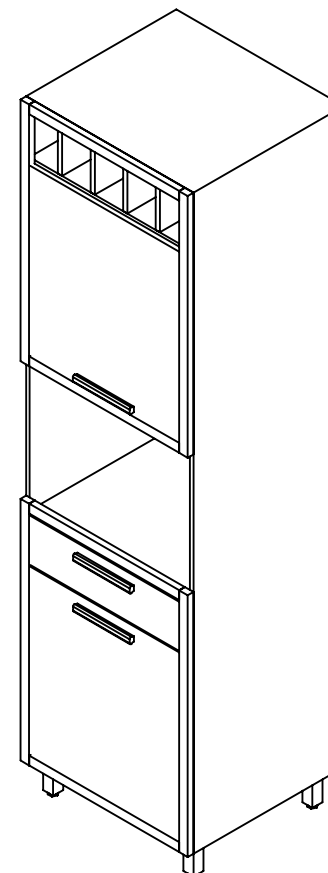
09 Fixação do Tapa Furo



Parabéns, você montou o produto!



PANELEIRO
ISIS



Atualizado em: 24/01/2024 Ao solicitar assistência, informe o número da peça e a letra do acessório

Rua Projetada S/N - Biarro Belo Horizonte
Rodeiro - MG - CEP 36510-000

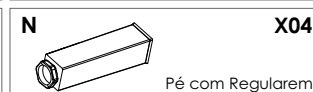
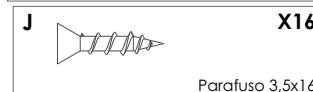
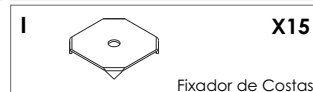
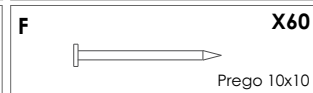
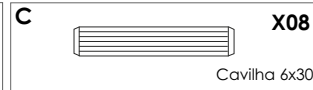
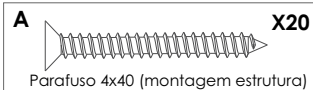
(32) 3577-3900



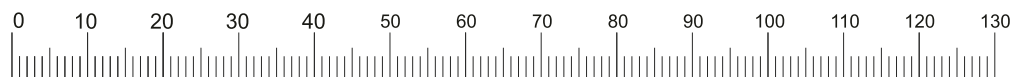
LISTA DE PEÇAS

COD.	Nº DO ITEM	DESCRIÇÃO	DIMENSÕES			QTD.
			COMP.	LARG.	ESPE.	
11239	1	BASE	612	450	15	1
11241	2	LATERAL ESQUERDA	2000	450	15	1
11240	3	LATERAL DIREITA	2000	450	15	1
11242	4	TAMPO/ PRATELEIRA	580	450	15	4
11246	5	PRATELEIRA ADEGA	580	450	15	2
11238	6	FRENTE GAVETA	543	155	15	1
11243	7	LATERAL GAVETA	400	100	15	2
11244	8	TRASEIRO GAVETA	495	80	15	1
11250	9	FUNDO DE GAVETA	508	407	3	1
10170	10	AFASTADOR DA GAVETA	400	62	15	1
11245	11	DIVISÃO ADEGA	107	448	15	4
11251	12	COSTA CENTRAL COR	605	128	3	1
11248	13	COSTA INFERIOR DA GAVETA	605	490	3	1
11247	14	COSTA INFERIOR	605	360	3	1
11249	15	COSTA SUPERIOR	605	303	3	2
11252	16	COSTA ADEGA COR	605	128	3	1
11237	17	PORTA INFERIOR	635	543	15	1
11236	18	PORTA SUPERIOR	600	543	15	1
20202	19	MOLDURA	730	30	18	2
20207	20	MOLDURA	345	30	18	2

KIT DE FERRAGENS / COD. 20163

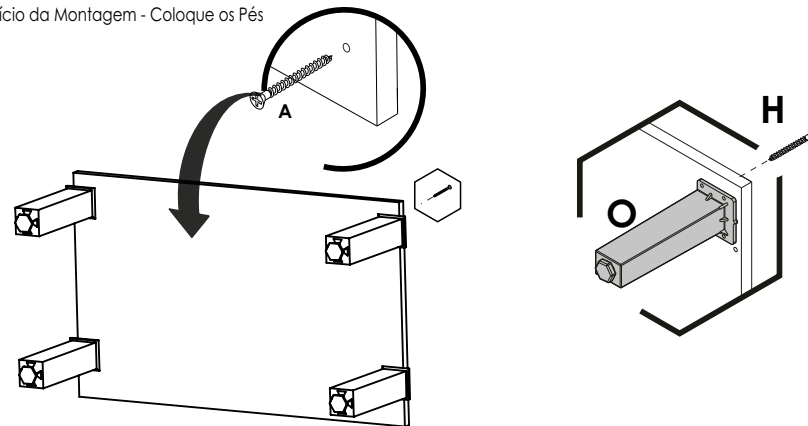


Medidas em mm

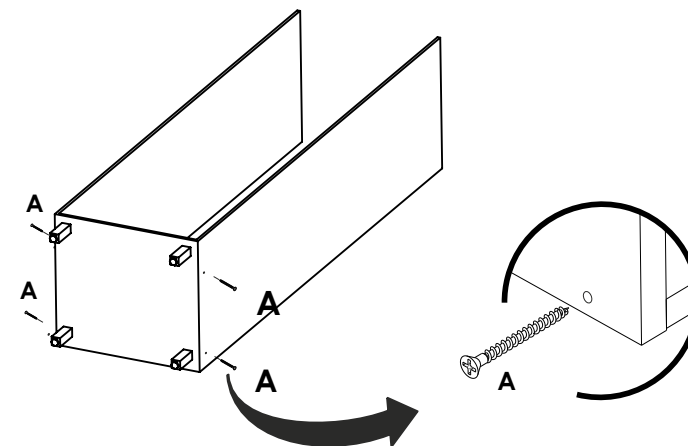


Ao solicitar assistência, informe o número da peça e a letra do acessório

01 Início da Montagem - Coloque os Pés



02 Montagem das Laterais



03 Montagem do Tampo e prateleiras

