



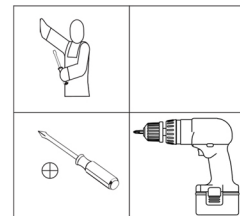


INSTRUÇÕES DE MONTAGEM CADEIRA MOSCOU

ACESSÓRIOS

A		16 UNI. 4,2X19
C		02 UNI. 5,0x40
B		01 UNI. 1/4x70
D		04 UNI. M 5X30



REQUISITOS PARA MONTAGEM

PASSO 1 - VISÃO DE TODAS AS PEÇAS



PASSO 2



PASSO 3 - POSICIONAR O ARCO E PARAFUSAR OS PÉS QUE JÁ ESTÃO PRÉ FURADOS



ATENÇÃO

*PARAFUSAR O ARCO PELA PARTE **INTERNA** DOS PÉS*

ASPECTO FINAL

