

Produto Concluído
Producto terminado
Finished Product

ITM/I719-
REV- 000



HENN

Ind. e Com. de Móveis Henn
Mondai - SC - Brasil

+55 49 3674.3500

@moveishenn
www.henn.com.br

ITM/I719-

INSTRUÇÕES DE MONTAGEM

INSTRUCCIONES DE MONTAJE
ASSEMBLY INSTRUCTIONS

Comoda Alegria 1 Porta 3 Gavetas | Cómoda Alegria 1 Puerta 3 Cajones |
Dresser Alegria 1 Door 3 Drawers

I719-05 Branco HP
I719-168 Rosa Chá

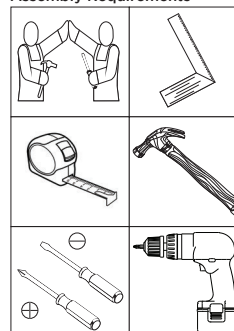


OPÇÃO 1
OPCION 1
OPTION 1



OPÇÃO 2
OPCION 2
OPTION 2

Requisitos para montagem
Requisitos para la montaje
Assembly Requirements



Imagens meramente ilustrativas,
não acompanha o produto.
Imágenes ilustrativas, no incluidas
con el producto.
Illustrative images, not included
with the product.

ASSISTÊNCIA TÉCNICA

Para solicitação de Assistência Técnica você consumidor deverá entrar em contato com o Lojista o qual você realizou a compra deste produto e solicitar a assistência técnica das peças avariadas. A garantia abrange todas as peças, partes e componentes que eventualmente venham apresentar defeito de fabricação no prazo de 03 (três) meses, contando a partir da entrega do produto ao consumidor, mediante nota fiscal de compra.

AVISO

Para limpeza de seu móvel, use uma flanela seca ou umedecida, e não utilize produtos químicos que possam danificar seu produto.

SISTEMA DE MONTAGEM

O sistema de montagem dos produtos, funciona de acordo com a ordem crescente dos números indicados no desenho. Ex: 01, 02, 03, 04... até a conclusão da montagem.

ADVERTENCIA

Para limpieza de su móvil, use una flanela seca o húmeda, y no utilice productos químicos que puedan dañar su producto.

SISTEMA DE MONTAJE

El sistema de montaje de los productos funciona de acuerdo con el orden creciente de los números indicados en el dibujo. Ej.: 01, 02, 03, 04... hasta la conclusión del montaje.

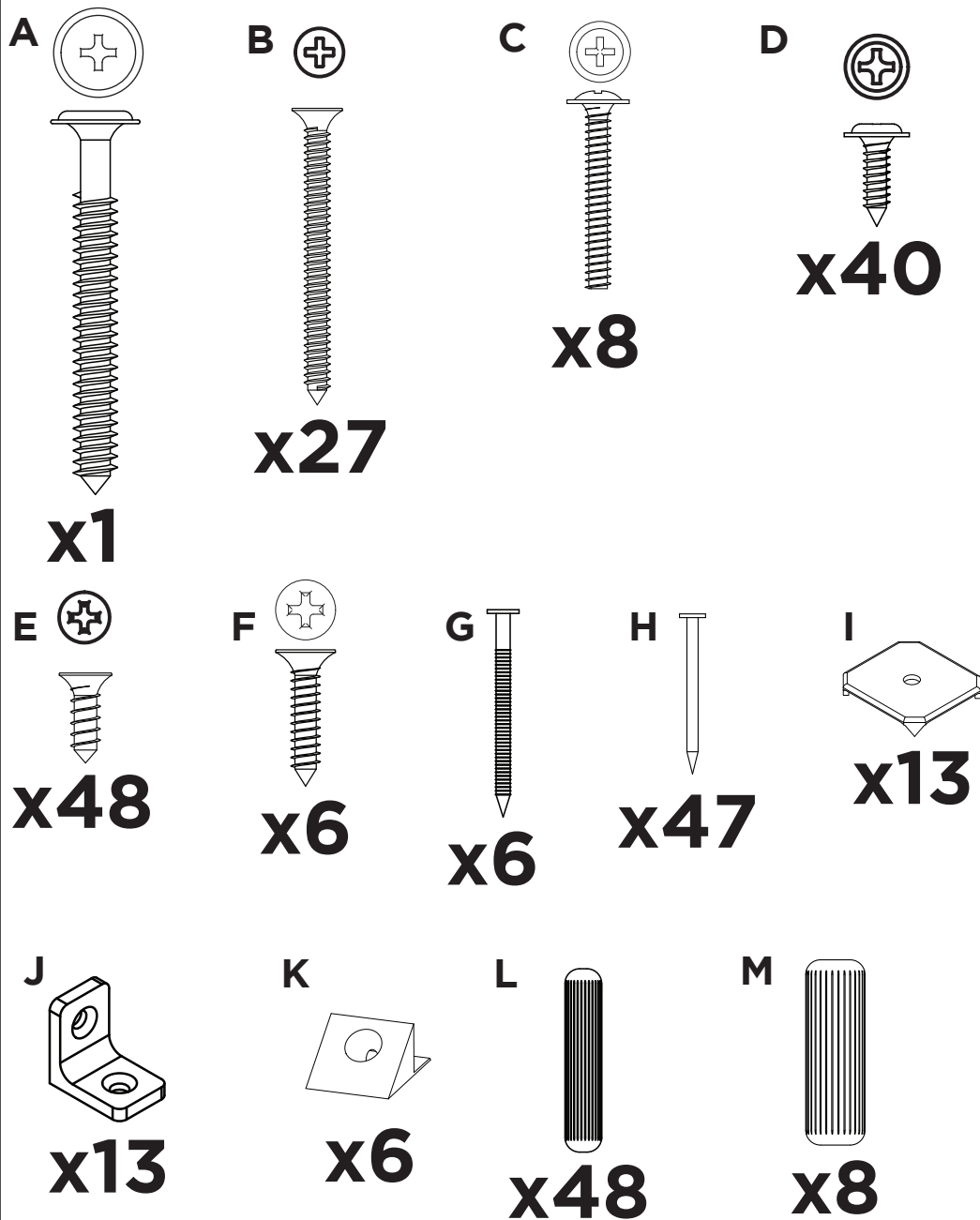
NOTICE

To clean your furniture, use a dry or wet cloth, and do not use chemicals that may damage your product.

ASSEMBLY SYSTEM

The products' assembly system works according to the increasing order of the indicated numbers. For example: 01, 02, 03, 04 ... to the end of the assembly.

ACESSÓRIOS | ACCESORIOS | ACCESSORIES



Parafusos em escala
Tornillos escalados
Scaled screws **1:1**

PASSO 12

ACESSÓRIOS REQUERIDOS

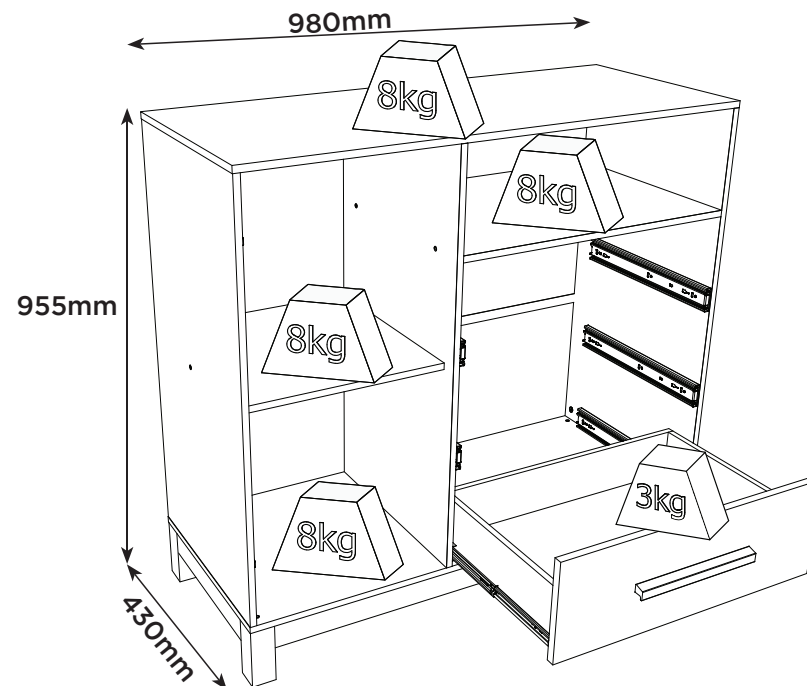
A		01
D		02
P	HENN	01
T		01
U		01
W		02
Y		07

FERRAMENTAS NECESSÁRIAS



Para parede: Ajustar
no modo perfuração
Para peça (1): Usar
torque 5

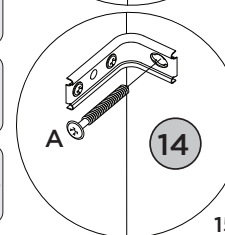
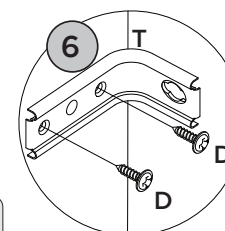
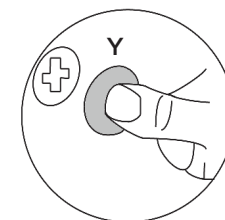
Pesos máximos recomendados com carga distribuída
Peso máximo recomendado con la carga distribuida
Recommended maximum weight with distributed load.



Imprescindível a fixação do produto na parede, a não colocação destas ferragens para fixação (A, D, T e U), poderá permitir que o produto vire, causando acidente.

Es imprescindible la fijación del producto en la pared, la no colocación de estos herrajes para fijación (A, D, T y U), podrá permitir que el El producto se vuelva, causando accidente.

Indispensable to fix the product on the wall, not the placement of these attachment fittings (A, D, T and U) may allow the product to turn, causing an accident.



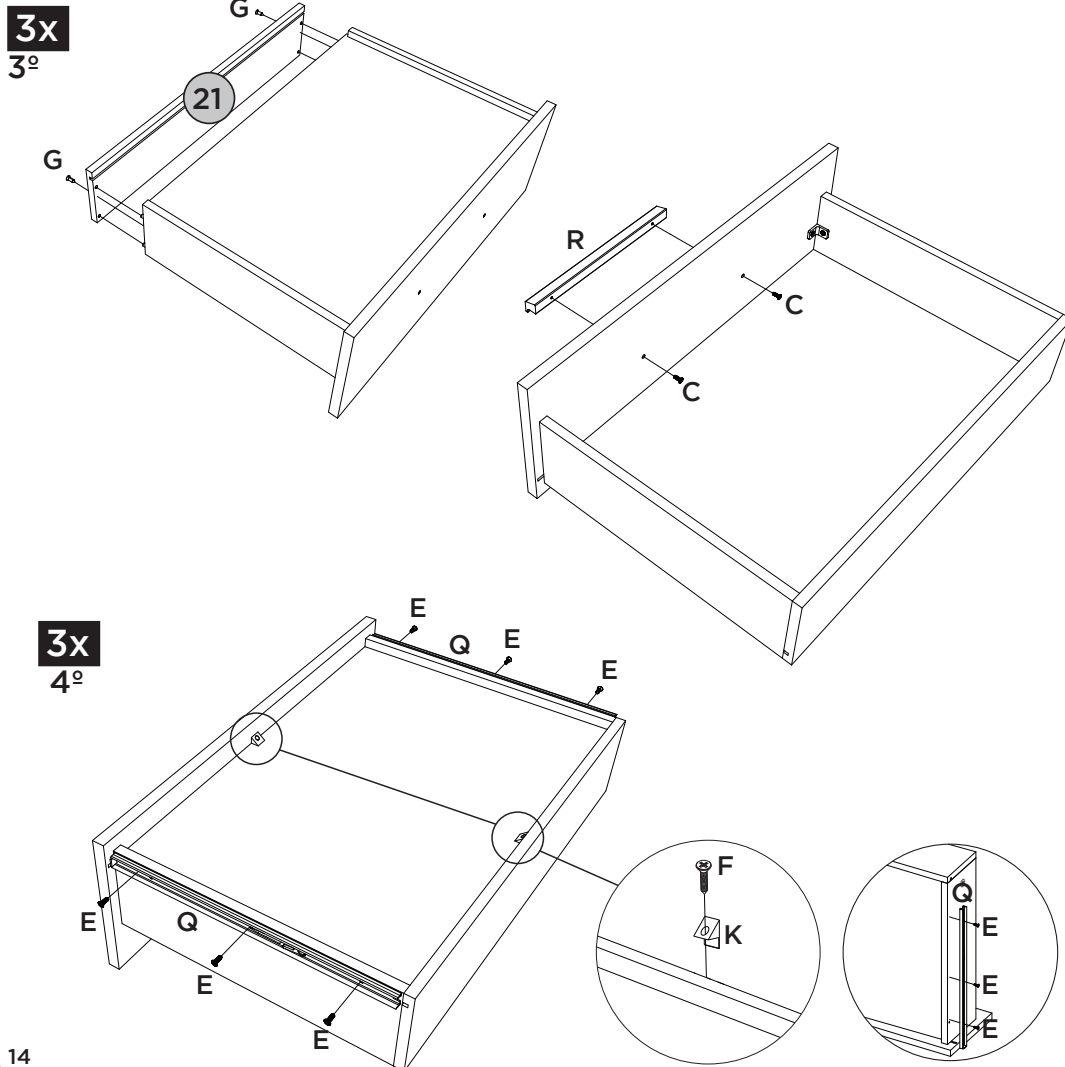
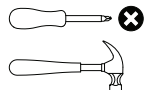
PEÇAS REQUERIDAS

ACESSÓRIOS REQUERIDOS

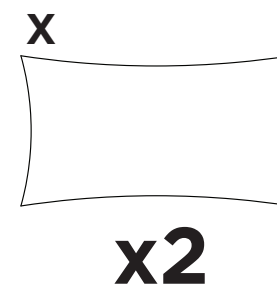
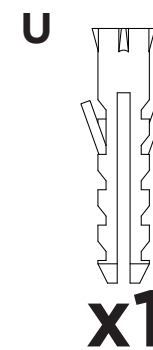
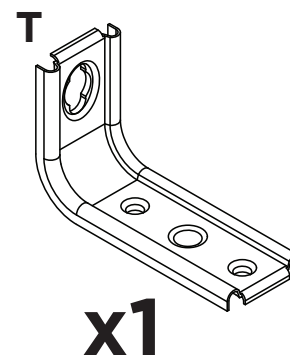
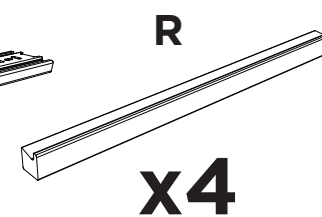
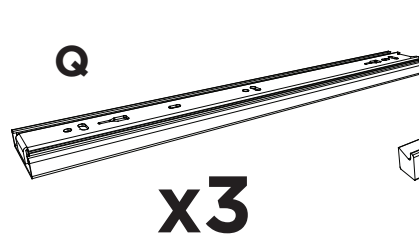
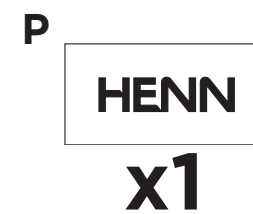
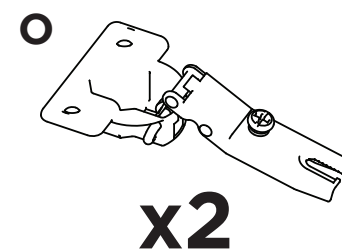
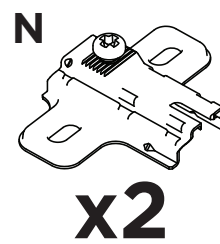
FERRAMENTAS NECESSÁRIAS

21	RIPA DE TRÁS	x3
----	--------------	----

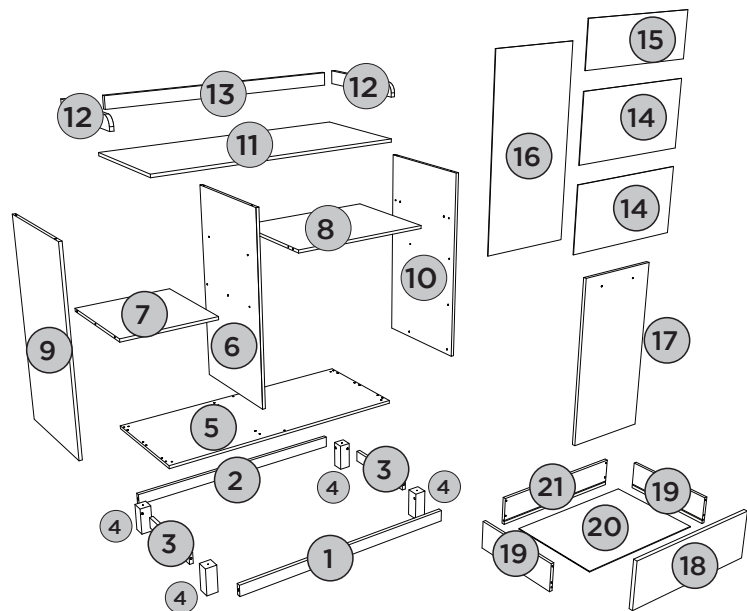
C		06
E		18
F		06
G		06
K		06
Q		03
R		03
X		



ACESSÓRIOS | ACCESORIOS | ACCESSORIES



LISTA DE PEÇAS | LISTA DE PIEZAS | LIST OF PIECES



Item	Caixa Caja Box	Qtd Ctd Qty	Descrição Descripción Description	Medidas (mm) Dimensions (mm) Size (measure- ments) (mm)
1	1/1	01	Rodapé frontal delante de pie de página Front footer	888x45x15
2	1/1	01	Rodapé traseiro Pie de página trasera Rear footer	888x45x15
3	1/1	02	Rodapé lateral Pie de página lado Side Footer	318x45x15
4	1/1	04	Pé Pie Foot	110x45x45
5	1/1	01	Base Base Base	980x410x12
6	1/1	01	Divisão División Division	770x410x12
7	1/1	01	Prateleira fixa estante fijo fixed shelf	379x379x12
8	1/1	01	Tampo das gavetas parte superior de los cajones top of drawers	563x410x12
9	1/1	01	Lateral esquerda Lateral izquierda Left side	770x410x12
10	1/1	01	Lateral direita Lateral derecha Right side	770x410x12
11	1/1	01	Tampo Tapa Top	980x410x12
12	1/1	02	Moldura Lateral Marco lateral Side Frame	390x50x15
13	1/1	01	Moldura Superior Marco Superior Upper Frame	917x48x15
14	1/1	02	Fundo Cru Fondo crudo Raw Bottom	577x296x3
15	1/1	01	Fundo menor fondo más pequeño smaller background	577x200x3
16	1/1	01	Fundo maior fondo más grande larger background	795x394x3
17	1/1	01	Porta Puerta Door	780x388x15
18	1/1	03	Frente de gaveta Frente del cajón drawer front	571x192x15
19	1/1	06	Lado de gaveta Lado del cajón Side of drawer	350x110x12
20	1/1	03	Fundo de gaveta Fondo del cajón Drawer bottom	530x361x3
21	1/1	03	Ripa de trás Malla detrás Rear lath	543x110x3

PASSO 10

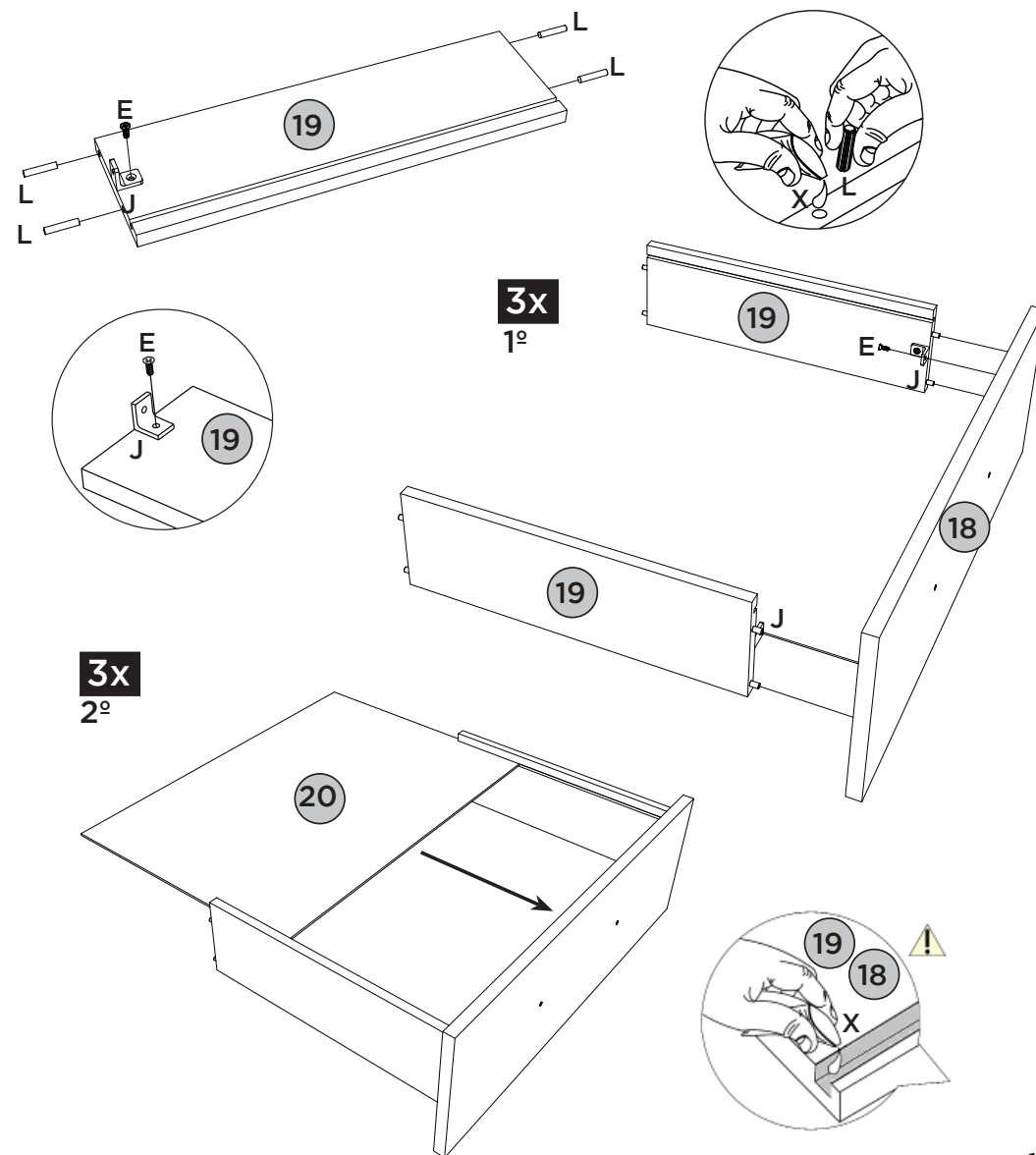
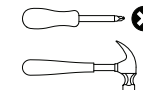
PEÇAS REQUERIDAS

18	FRENTE DE GAVETA	x3
19	LADO DE GAVETA	x6
20	FUNDO DE GAVETA	x3

ACESSÓRIOS REQUERIDOS

E		12
J		06
L		24
X		

FERRAMENTAS NECESSÁRIAS







PASSO 9

ITM/1719-

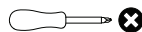
PEÇAS REQUERIDAS

17	PORTA	x1
----	-------	----

ACESSÓRIOS REQUERIDOS

C		02
D		04
O		02
R		01

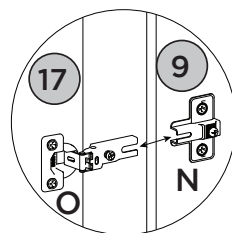
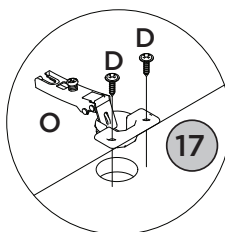
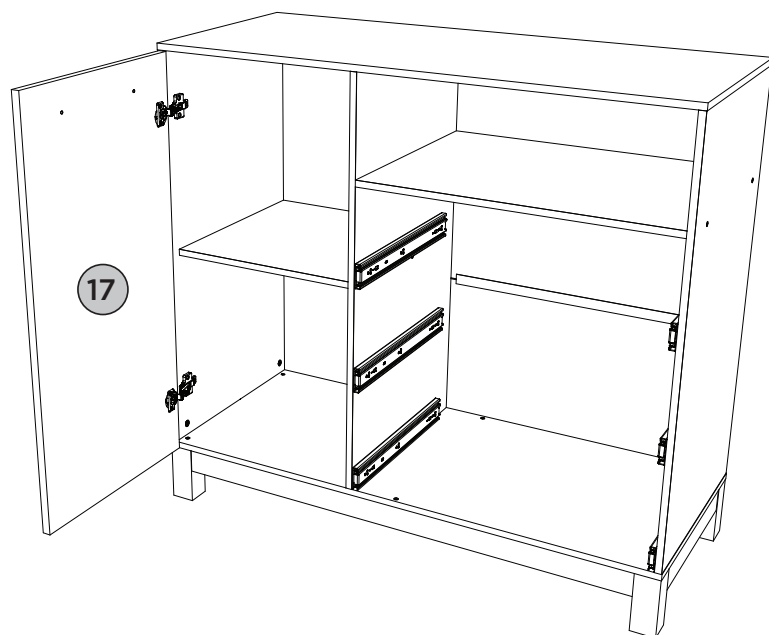
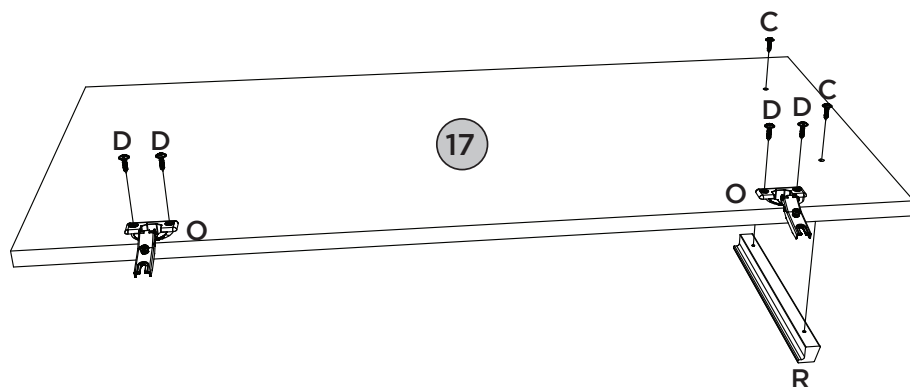
FERRAMENTAS NECESSÁRIAS



Vídeo: Instalar e regular Dobradiças

Video: Instale y ajuste las bisagras

Video: Install and adjust hinges



PASSO 1

ITM/1719-

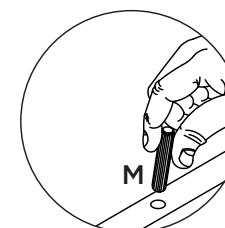
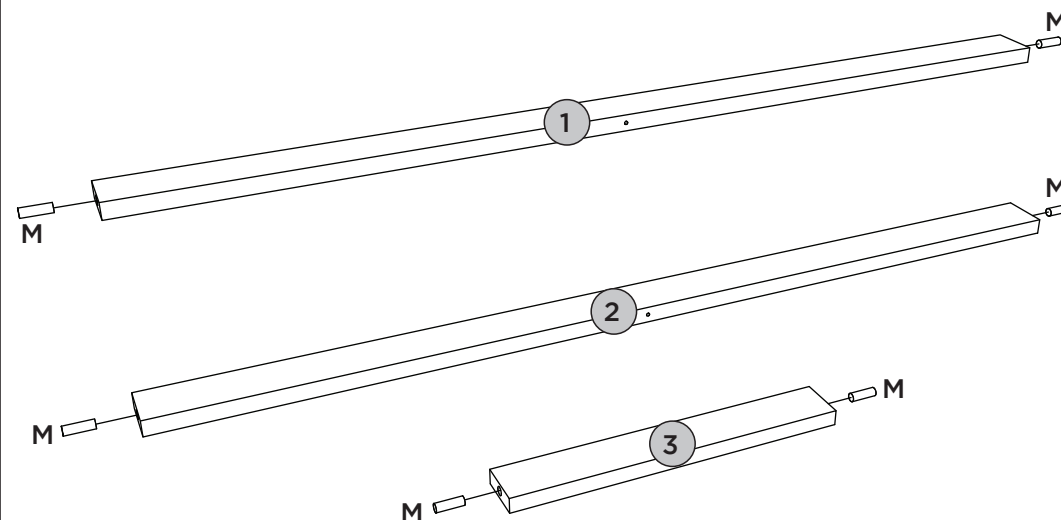
PEÇAS REQUERIDAS

1	RODAPÉ FRONTAL	x1
2	RODAPÉ TRASEIRO	x1
3	RODAPÉ LATERAL	x2

ACESSÓRIOS REQUERIDOS

M		08
---	---	----

FERRAMENTAS NECESSÁRIAS



PASSO 2

ITM/1719-

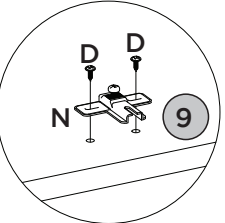
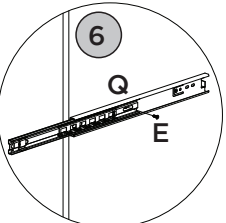
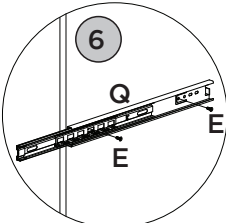
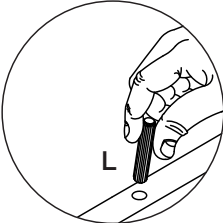
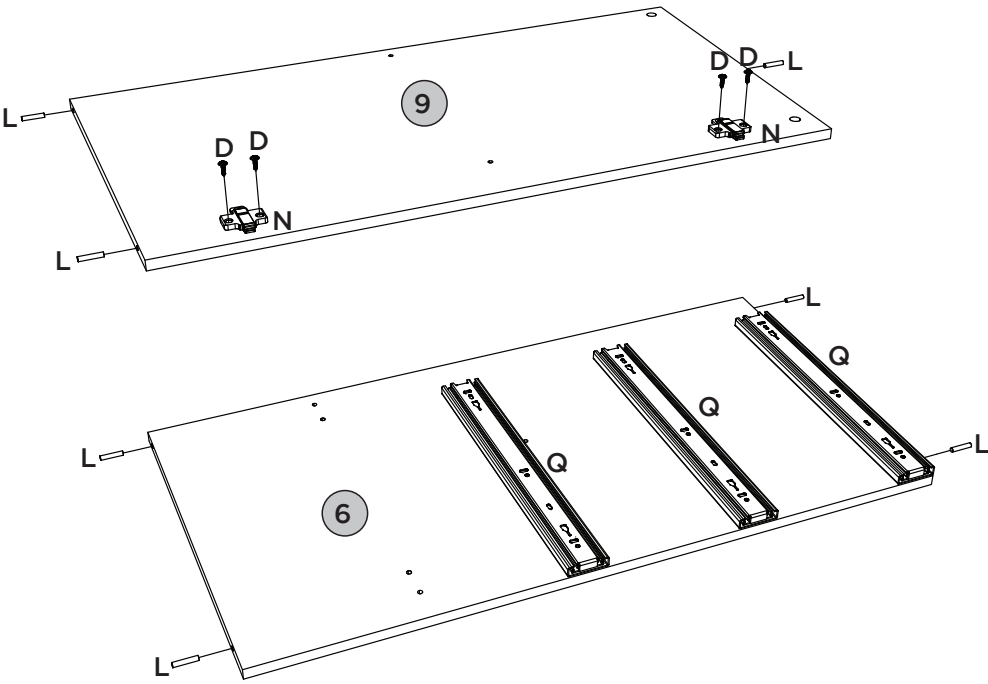
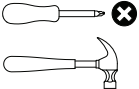
PEÇAS REQUERIDAS

6	DIVISÃO	x1
9	LATERAL ESQUERDA	x1

ACESSÓRIOS REQUERIDOS

D		04
E		09
L		07
N		02
Q		03

FERRAMENTAS NECESSÁRIAS



PASSO 7

ITM/1719-

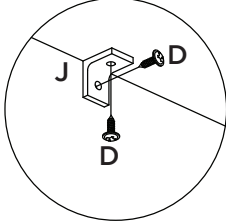
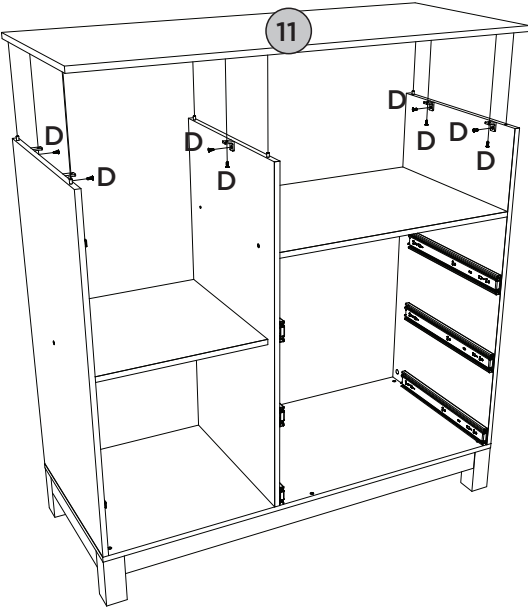
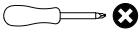
PEÇAS REQUERIDAS

11	TAMPO	x1
----	-------	----

ACESSÓRIOS REQUERIDOS

D		10
J		05

FERRAMENTAS NECESSÁRIAS



Cantoneiras próximo das bordas da frente das Laterais(9 e 10) e divisão (06).

Angulos cercanos a los bordes frontales de los Lados (9 y 10) y división (06).

Angles close to the front edges of the Sides (9 and 10) and division (06).

PASSO 8

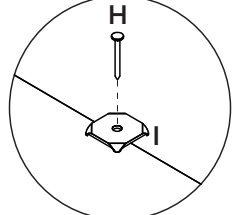
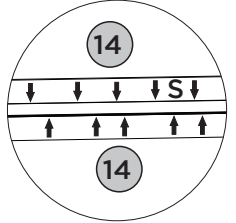
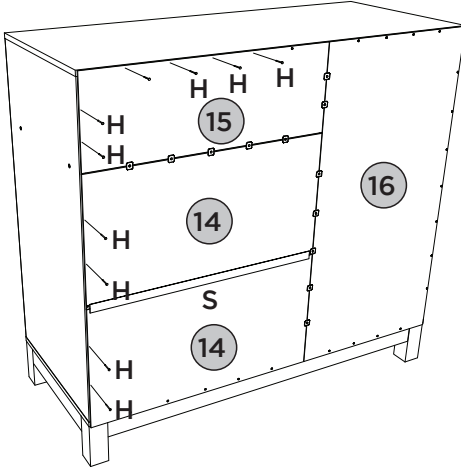
PEÇAS REQUERIDAS

14	FUNDO CRU	x2
15	FUNDO MENOR	x1
16	FUNDO MAIOR	x1

ACESSÓRIOS REQUERIDOS

H		47
I		13
S		01

FERRAMENTAS NECESSÁRIAS






PASSO 6

ITM/1719-

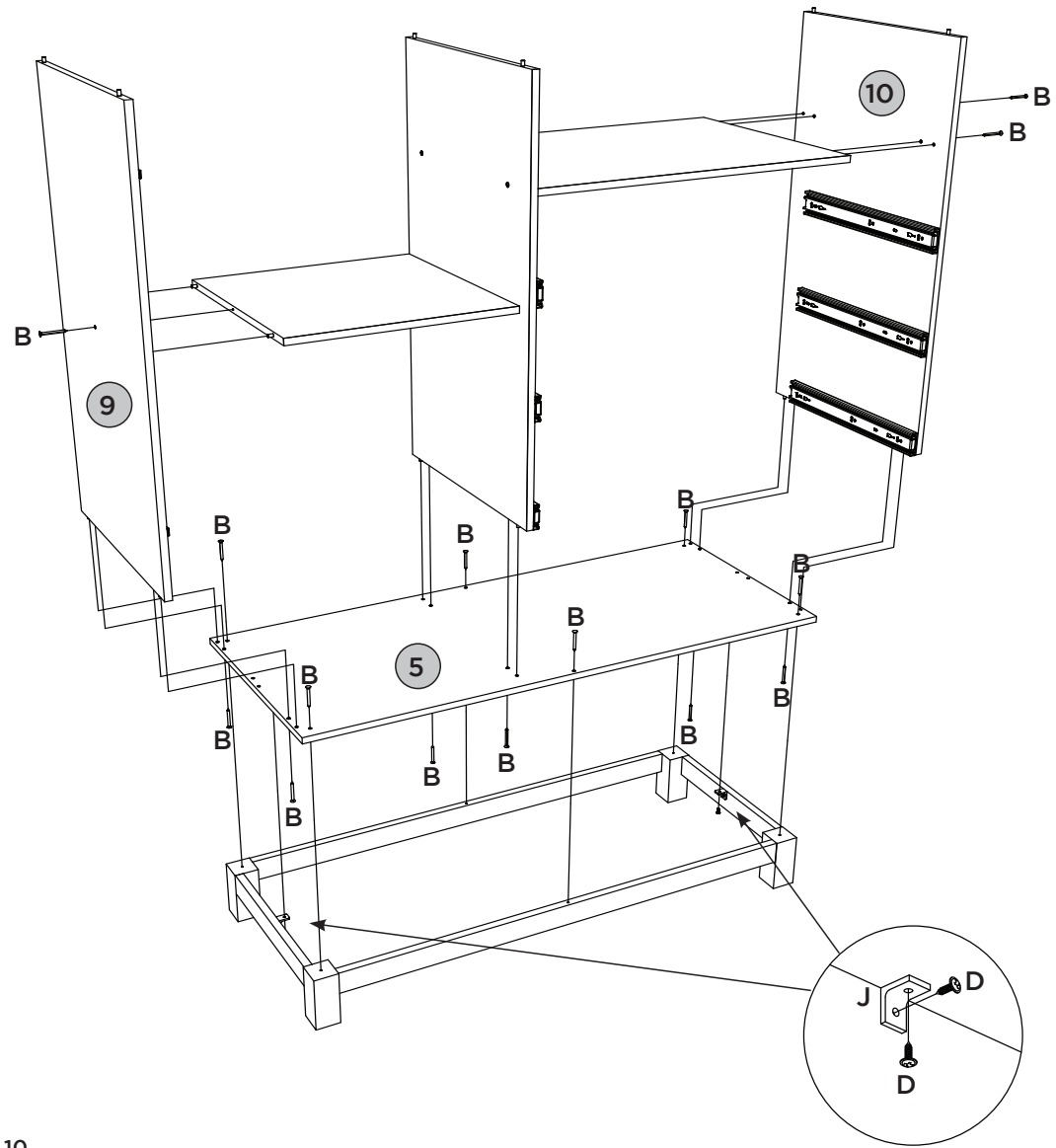
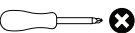
PEÇAS REQUERIDAS

5	BASE	x1
9	LATERAL ESQUERDA	x1
10	LATERAL DIREITA	x1

ACESSÓRIOS REQUERIDOS

B		15
D		04
J		02

FERRAMENTAS NECESSÁRIAS






PASSO 3

ITM/1719-

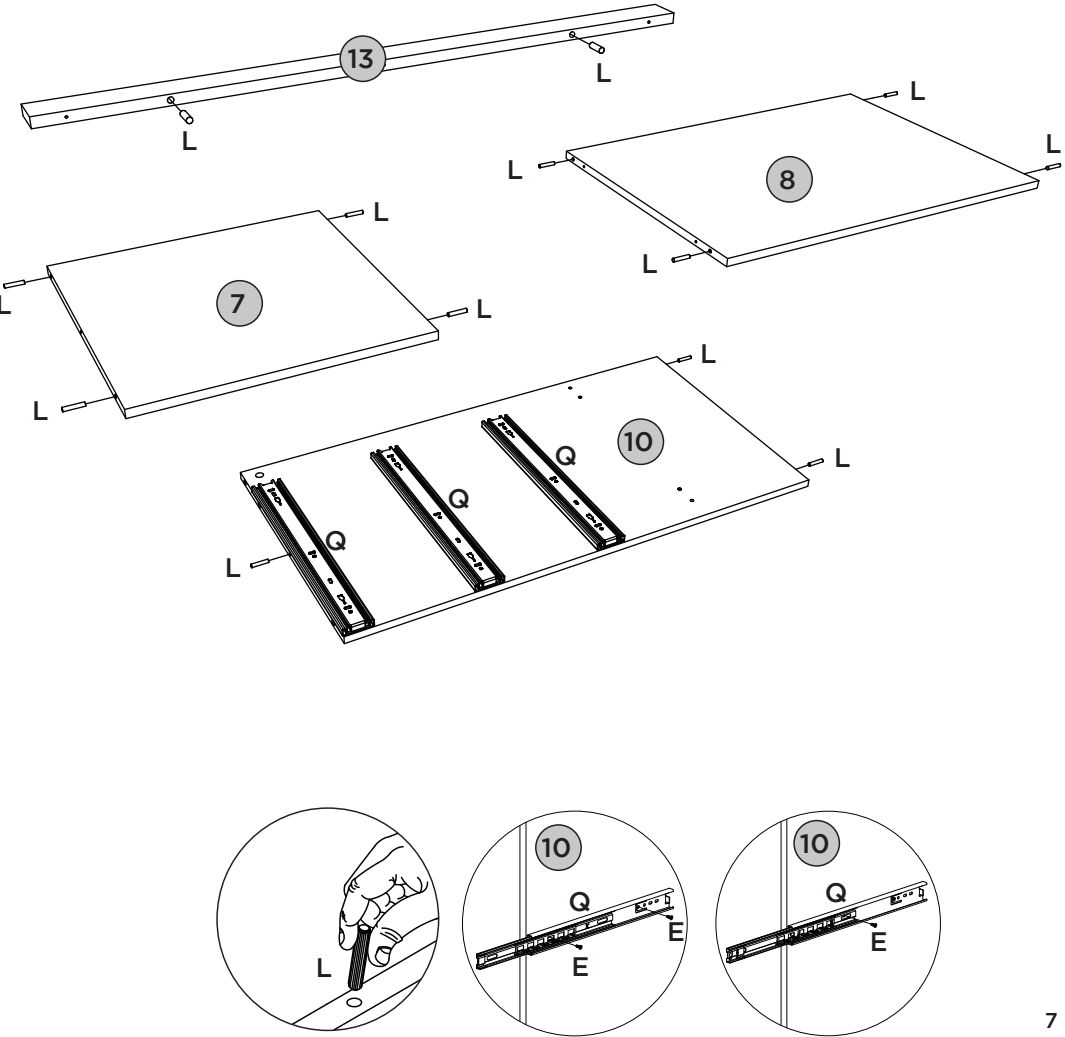
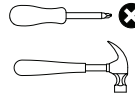
PEÇAS REQUERIDAS

7	PRATELEIRA FIXA	x1
8	TAMPO DAS GAVETAS	x1
10	LATERAL DIREITA	x1
13	MOLDURA SUPERIOR	x1

ACESSÓRIOS REQUERIDOS

E		09
L		13
Q		03

FERRAMENTAS NECESSÁRIAS




PASSO 4

ITM/I719-

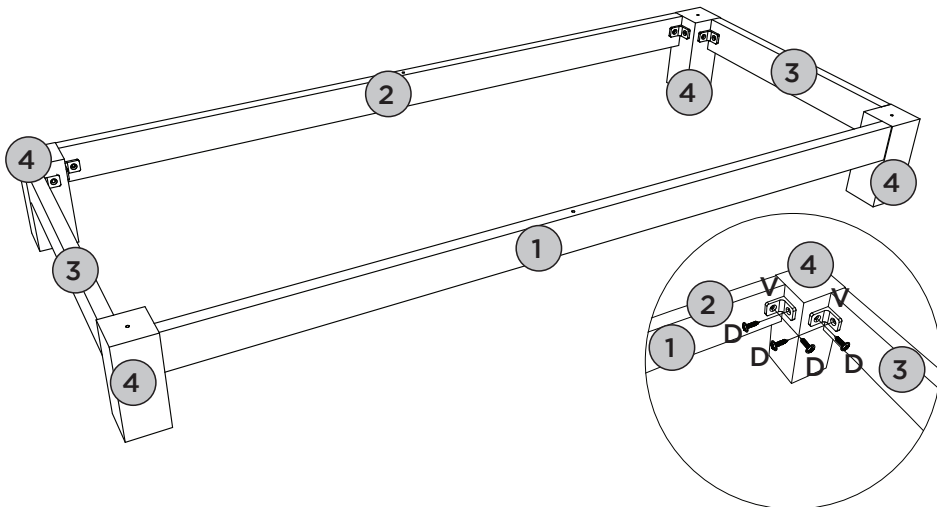
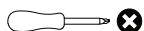
PEÇAS REQUERIDAS

1	RODAPÉ FRONTAL	x1
2	RODAPÉ TRASEIRO	x1
3	RODAPÉ LATERAL	x2
4	PÉ	x4

ACESSÓRIOS REQUERIDOS

D		16
V		08

FERRAMENTAS NECESSÁRIAS



PASSO 5

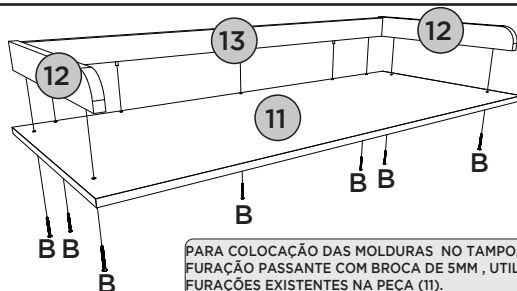
PEÇAS REQUERIDAS

11	TAMPO	x1
12	MOLDURA LATERAL	x2
13	MOLDURA SUPERIOR	x1

ACESSÓRIOS REQUERIDOS

B		07
---	---	----

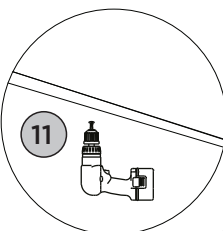
FERRAMENTAS NECESSÁRIAS



PARA COLOCAÇÃO DAS MOLDURAS NO TAMPO, É NECESSÁRIO FAZER A FURAÇÃO PASSANTE COM BROCA DE 5MM, UTILIZANDO COMO BASE AS PRÉ FURAÇÕES EXISTENTES NA PEÇA (11).

PARA COLOCAR LOS MARCOS EN LA PARTE SUPERIOR ES NECESARIO REALIZAR EL PERFORADO PASANTE CON TALADRO DE 5MM, UTILIZANDO COMO BASE LOS PRETALADRADOS EXISTENTES EN LA PIEZA (11).

TO PLACE THE FRAMES ON THE TOP, IT IS NECESSARY TO MAKE THE THROUGH DRILLING WITH A 5MM DRILL, USING AS A BASE THE EXISTING PRE DRILLINGS IN THE PART (11).



PASSO 6

ITM/I719-

PEÇAS REQUERIDAS

6	DIVISÃO	x1
7	PRATELEIRA FIXA	x1
8	TAMPO DAS GAVETAS	x1

ACESSÓRIOS REQUERIDOS

B		03
---	--	----

FERRAMENTAS NECESSÁRIAS

