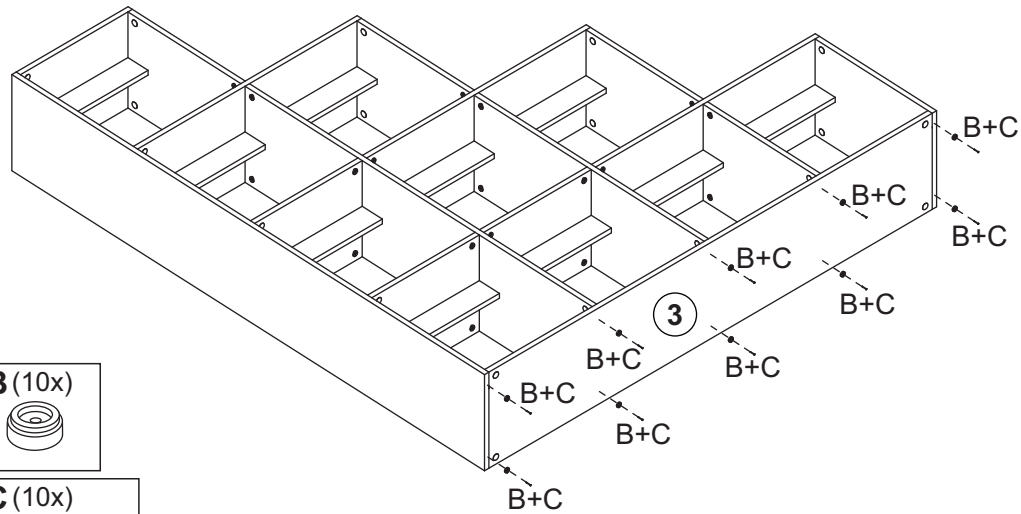


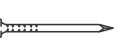
8



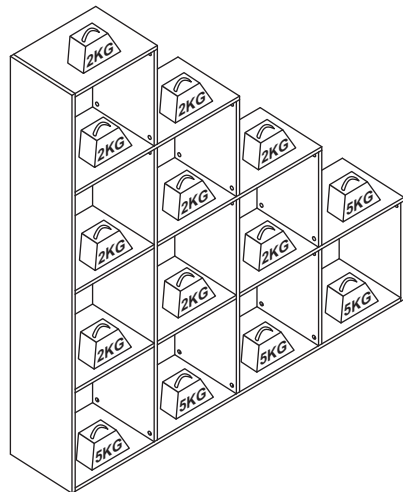
B (10x)



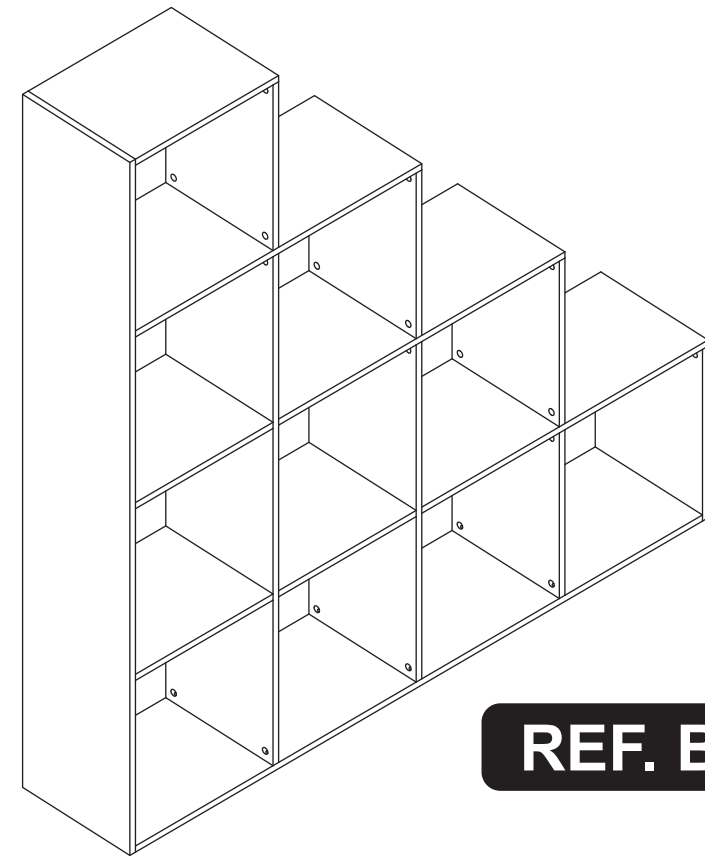
C (10x)



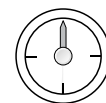
**PESO MÁXIMO SUPTADO**  
**MAXIMUM WEIGHT SUPPORTED**  
**PESO MAXIMO SOPORTADO**



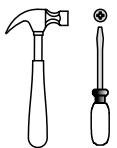
# emovell



## REF. B146



60 min.



### Manutenção e Limpeza:

Use pano levemente umedecido com água, seguido de pano seco. Nunca utilize produtos químicos ou abrasivos.

### Maintenance and Cleaning:

Use a cloth slightly dampened with water, followed by a dry cloth. Never use chemicals or abrasives.

### Mantenimiento y limpieza:

Use un paño ligeramente humedecido con agua, seguido de un paño seco. Nunca use productos químicos o abrasivos.

Rua José Benediti, nº 1620 - Fone: +55 (054) 2105-8400 - +55 (054) 99614-6360  
 CEP: 95706-500 - Bento Gonçalves - RS - Site: [www.emovell.com.br](http://www.emovell.com.br) - E-mail: [comercial@emovell.com.br](mailto:comercial@emovell.com.br)

# FERRAGENS / HARDWARE LIST / LISTA DE HERRAJES

## ATENÇÃO!!!

Em caso de uso de parafusadeira comece com um torque bem leve e vá aumentando até achar o ideal. Aperte somente até travar. Torque excessivo pode espanar o parafuso e danificar a peça comprometendo sua correta fixação.

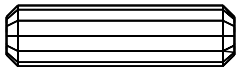



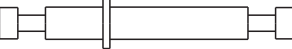
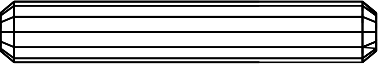


## ATTENTION!!!

If using a screwdriver, start with a very light torque and increase until you find the ideal. Press only until it locks. Excessive torque can strip the bolt and damage the part, compromising its correct fixation.

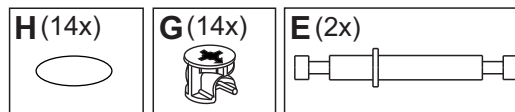
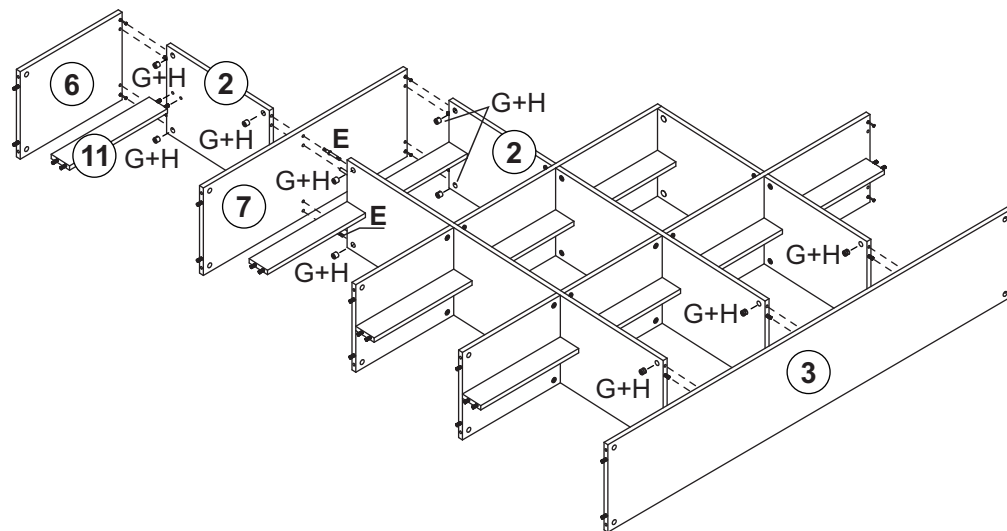
## ATENCIÓN!!!

En caso de utilizar un destornillador, comience con un torque muy ligero y vaya aumentando hasta encontrar el ideal. Presione solo hasta que se detener. Torsión excesivo puede despolvar el tornillo y dañar la pieza, comprometiendo su correcta fijación.

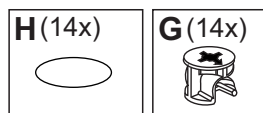
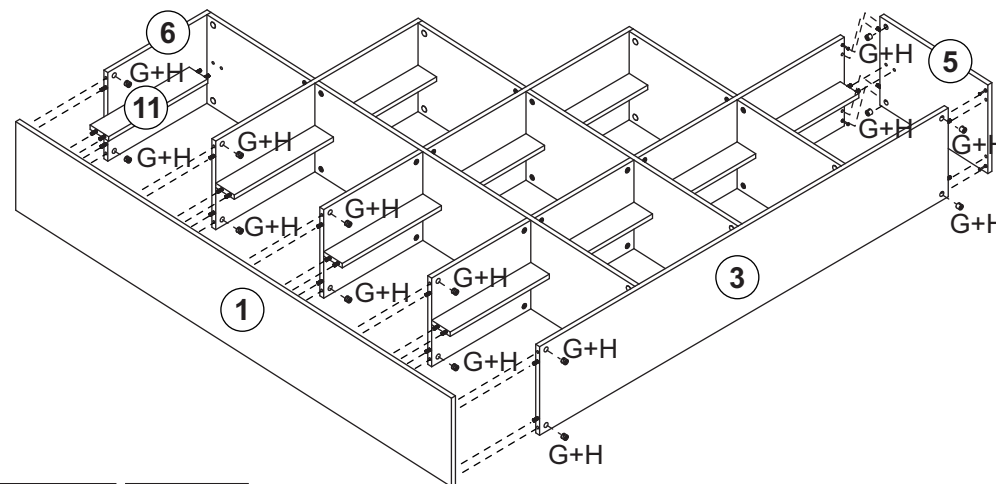


LOC.	IMAGEM / IMAGE / IMAGEN	QUANTIDADE # OF PIECES CANTIDAD
<b>A</b>	 8x30mm	<b>42</b>
<b>B</b>		<b>10</b>
<b>C</b>	 10 x 7	<b>10</b>
<b>D</b>		<b>14</b>
<b>E</b>		<b>12</b>
<b>F</b>	 8x50mm	<b>24</b>
<b>G</b>		<b>24</b>
<b>H</b>	 Tapa furo/Cover hole/Tapa agujero	<b>26</b>

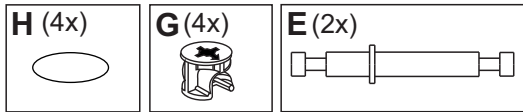
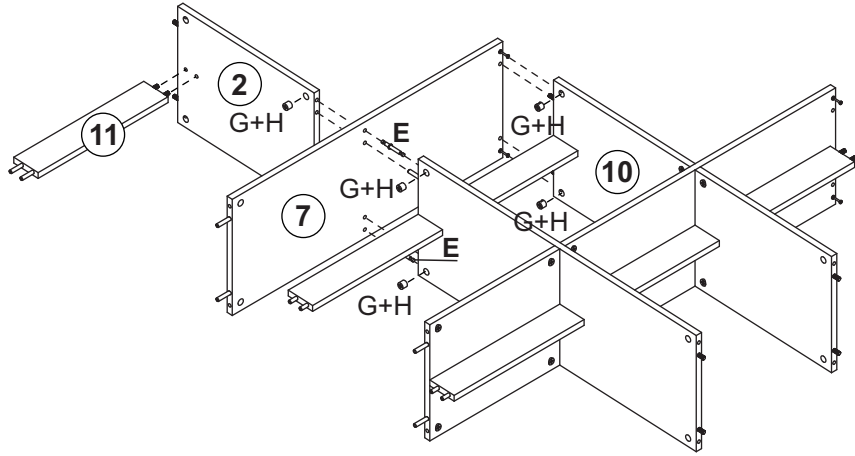
**6**



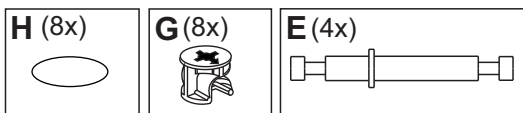
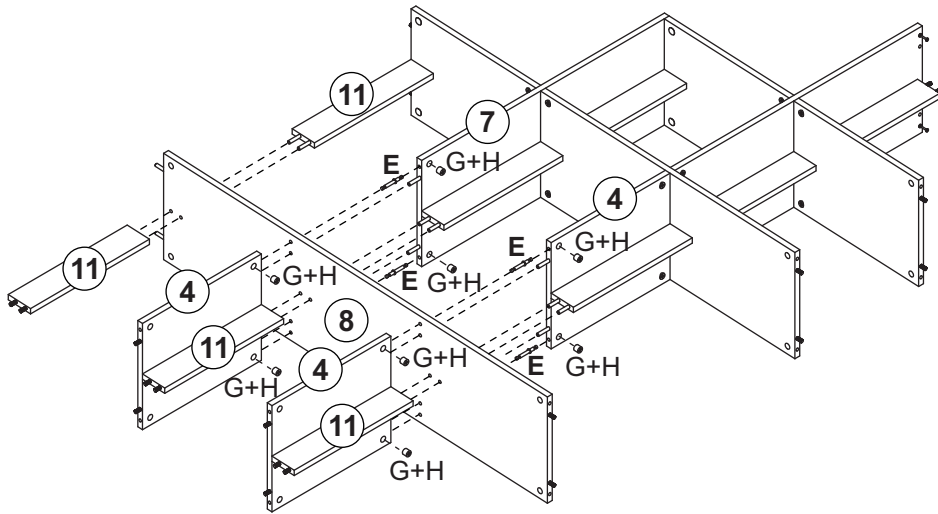
**7**



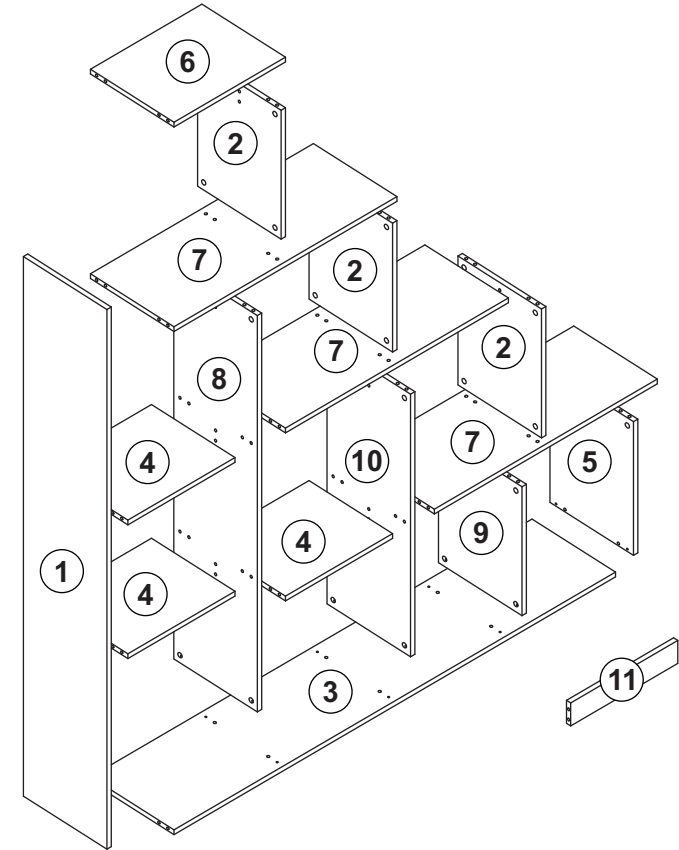
4



5

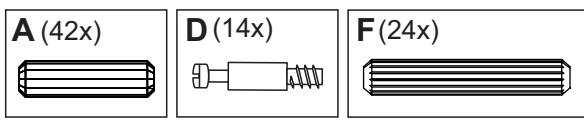
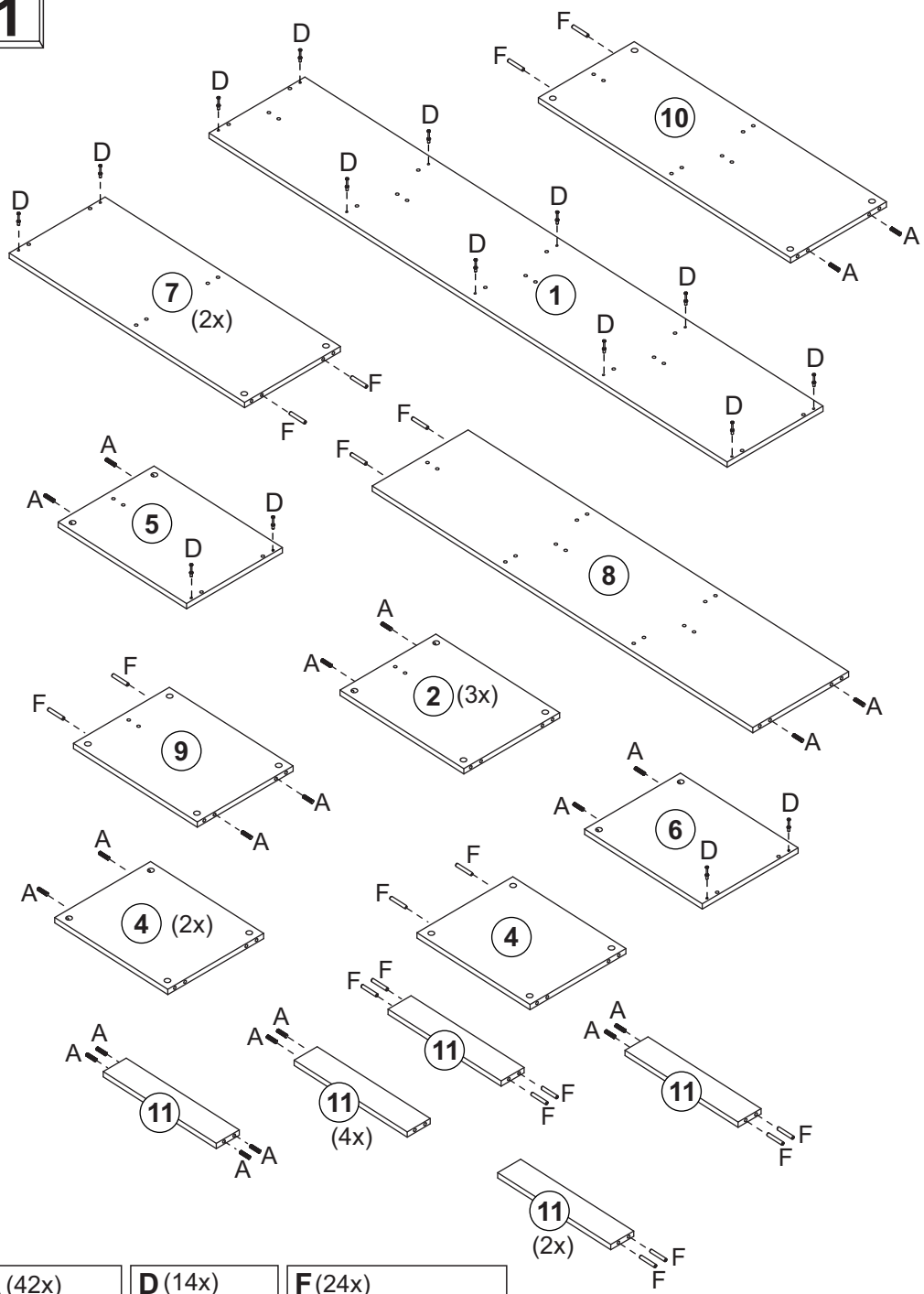


PARTES DO PRODUTO / PRODUCT PARTS / PARTES DEL PRODUCTO

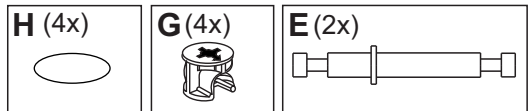
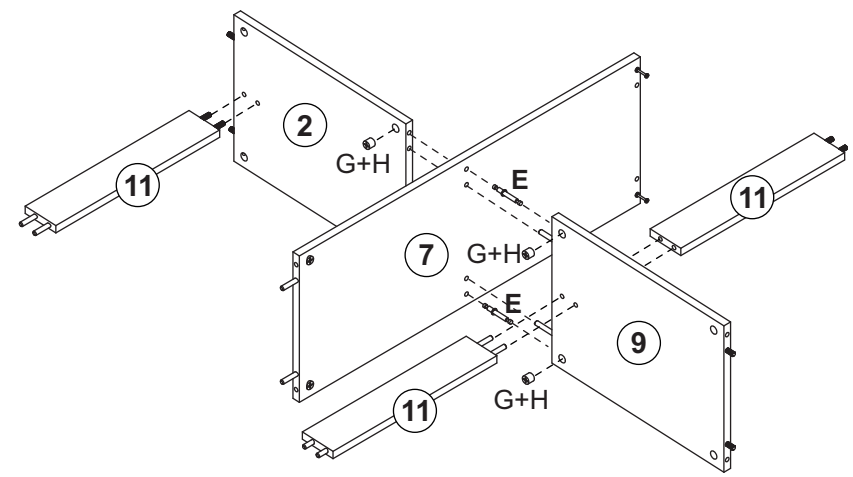


Loc.	Descrição / Description / Denominación	mm	Quantidade # Of Pieces Cantidad
1	Lateral esquerda/Left side/Lateral izquierda	1691x300x15	01
2	Lateral direita/Right side/Lateral derecha	404x300x15	03
3	Base/Base/Base	1521x300x15	01
4	Base central/Center base/Base central	369x300x15	03
5	Lateral direita inf/Lower right side/Lateral derecha inferior	419x300x15	01
6	Tampo superior/Upper top/Tapa superior	384x300x15	01
7	Tampo maior/Large top/Tapa mayor	768x300x15	03
8	Divisão maior/Large division/Divisoria mayor	1242x300x15	01
9	Divisão menor/Small division/Divisoria menor	404x300x15	01
10	Divisão central/Center division/Divisoria central	823x300x15	01
11	Travessa reforço/Reinforcement crossbar/Travessãno refuerzo	369x72x15	10

1



2



3

