

MANUAL DE MONTAGEM

CUIDADOS COM A LIMPEZA



Não utilize:

Álcool;
Solventes;
Acetona



Utilize:

Pano seco
e macio

ESTANTE **400**



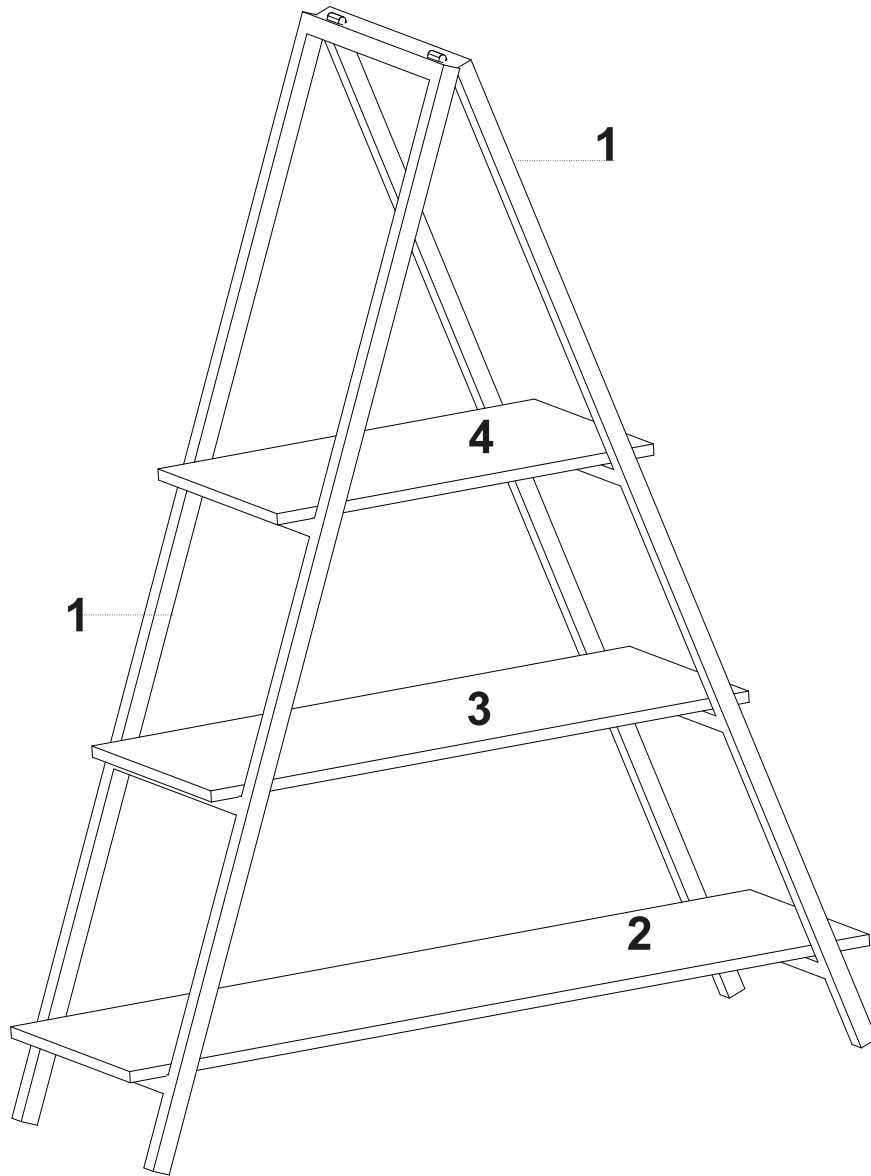
Para a montagem do produto você vai precisar de:




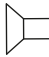
-
- ✓ Confira as peças, componentes e se possui as ferragens necessária para montagem;
 - ✓ Para proteger seu móvel, coloque as peças sobre um tapete;
 - ✓ Convide alguém pra te auxiliar, tudo pode ficar mais simples e rápido.

ESTANTE 400

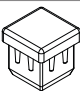
COD	REF.	DESENHO	DESCRIÇÃO	QT.	OBSERVAÇÃO	MEDIDAS (comp x profund x altura)	ENTRE PRATELEIRAS
6625	1		LATERAL ESTANTE 400	2	vai na caixa	350 x 25 x 1490mm	de baixo para cima:
	2		PÇ TAMPO ESTANTE 400 - 1100 X 320 X 15MM	1	vai na caixa	1100 X 320 X 15MM	
	3		PÇ TAMPO ESTANTE 400 - 800 X 320 X 15MM	1	vai na caixa	800 X 320 X 15MM	
	4		PÇ TAMPO ESTANTE 400 - 560 X 320 X 15MM	1	vai na caixa	560 X 320 X 15MM	
	178		PARAFUSO 4X40MM	12	6626 - KIT PARAFUSOS ESTANTE 400		360mm
	4300		PONTEIRA 25/25 (PRETA)	8			400mm



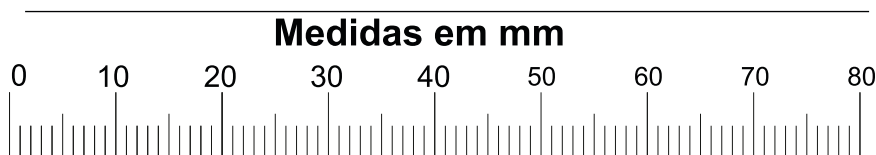
LISTA DE FERRAGENS

A   **X12**

Parafuso 4,0x40 (Fixação dos tampos)

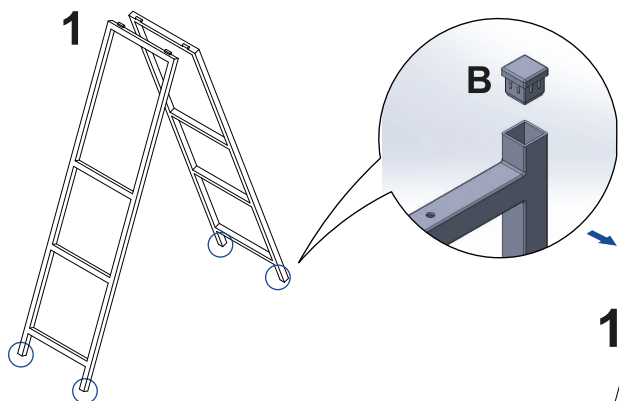
B  **X08**

Ponteira 15x15 interna preta

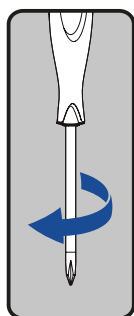
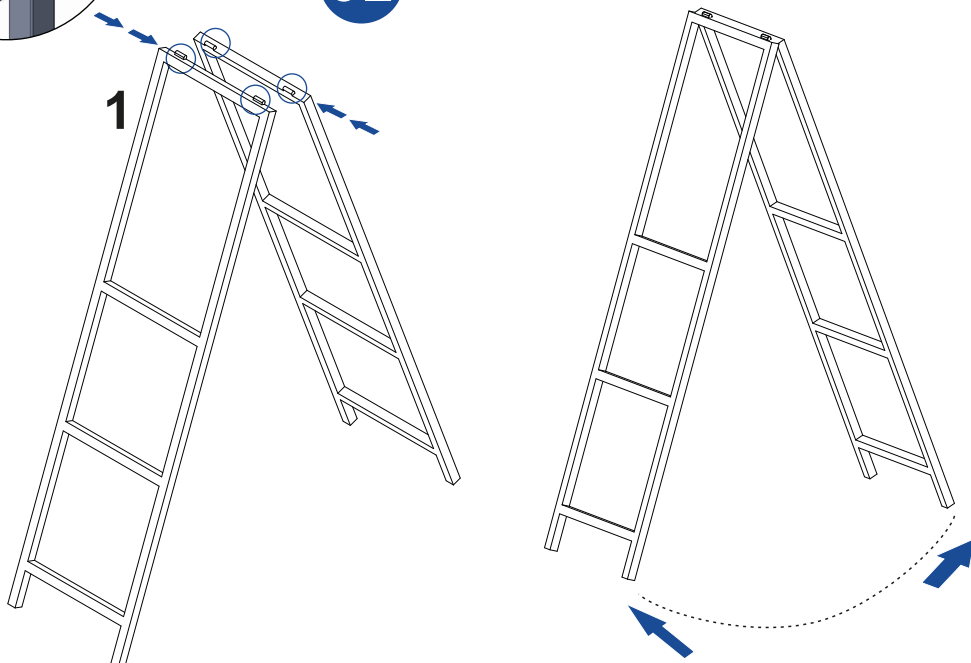


Ao solicitar assistência, informe o número da peça e letra do acessório

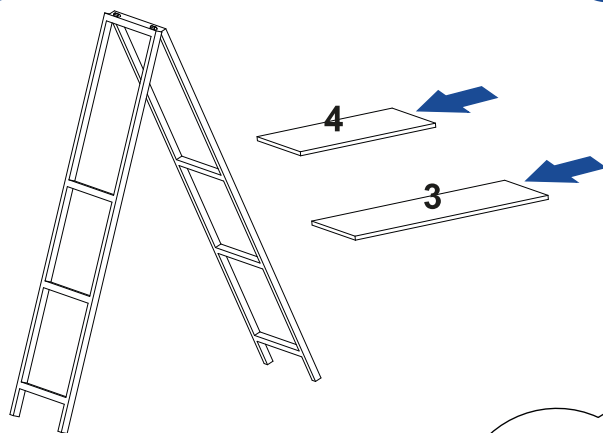
01 PASSO



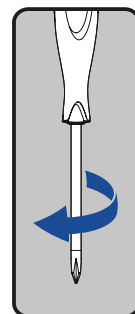
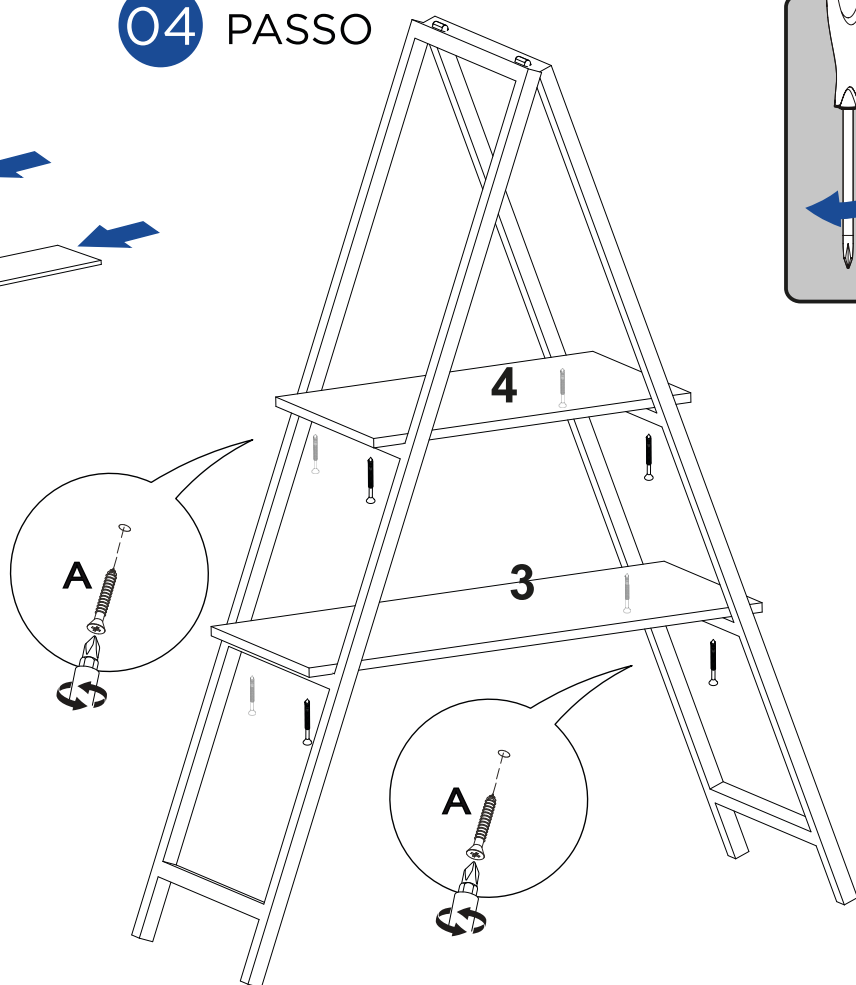
02 PASSO



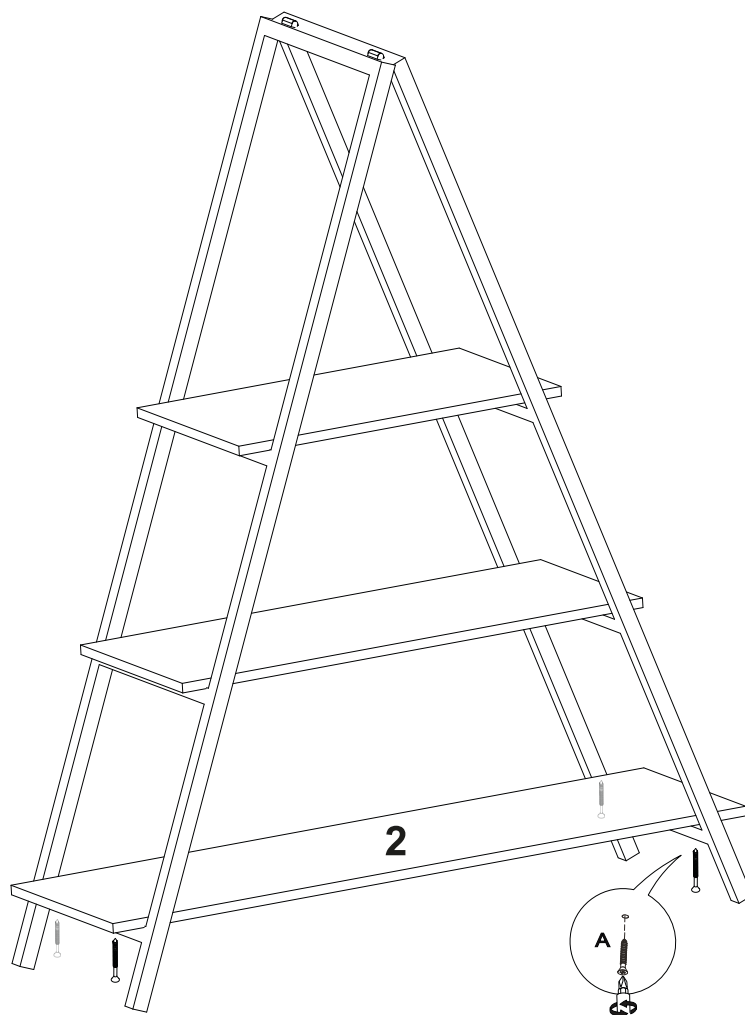
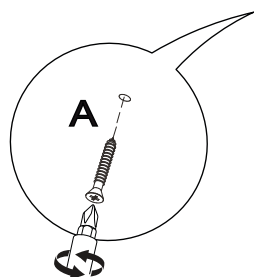
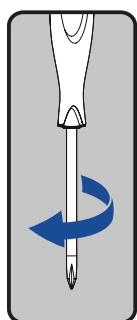
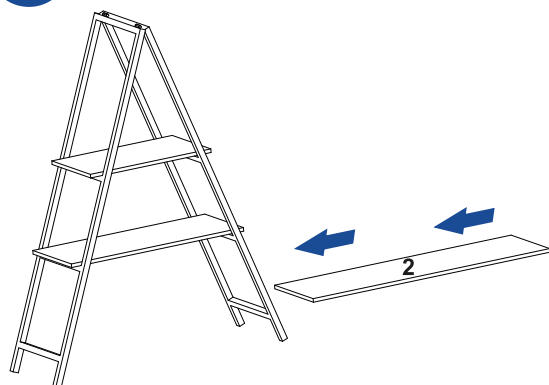
03 PASSO



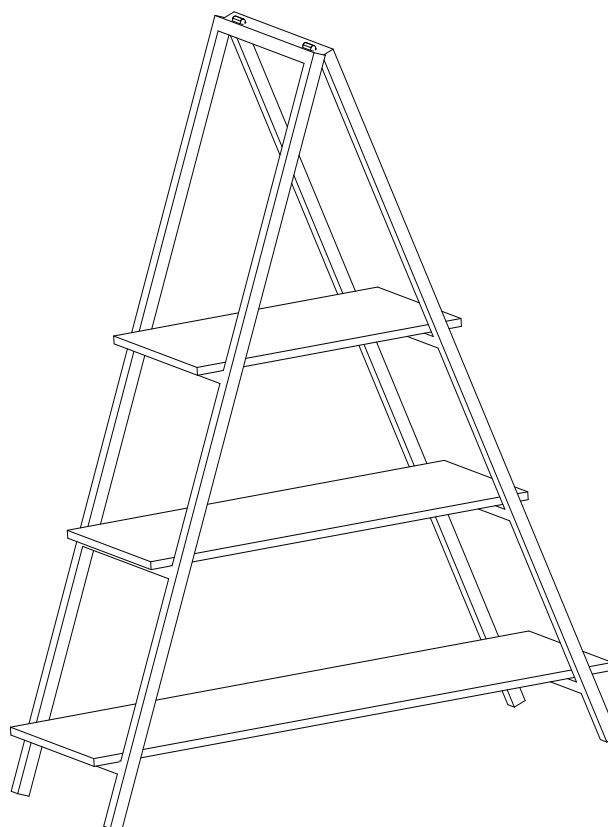
04 PASSO



05 PASSO



06 PASSO



SIGA-NOS:

 **MADMELOS**  **@MADMELOS**


MADMELOS
TUBULARES

Gudioval / MG
36515-000

SAC MADMELOS
(32) 3578-1365
comercial1@madmelos.com.br