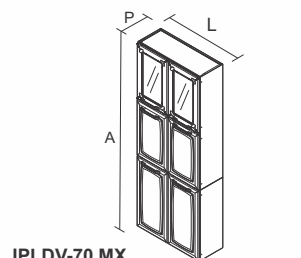
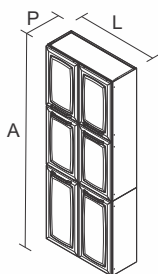


Nº	CÓDIGO CODE CÓDIGO	DESCRIÇÃO / DIMENSÃO (mm) DESCRIPTION / DIMENSION (mm) DESCRIPCIÓN / DIMENSIÓN (mm)	MATERIAL / ACABAMENTO Raw Material/ FINISH MATERIA PRIMA/ TERMINACIÓN	QUANTIDADE QUANTITY CANTIDAD
CORPO / CARCASS / CAJA				
01-	3000001301	LATERAL SUP IPLD-70 MAX BRA / 1104 X 256 X 17 MM	AÇO/STEEL/ACERO - BRANCO/WHITE/BLANCO	2
02-	3000001027	LATERAL INF IPLD-70 BRA / 690 X 256 X 17 MM	AÇO/STEEL/ACERO - BRANCO/WHITE/BLANCO	2
03-	3000001298	COSTA SUP IPLD-70 MAX BRA / 1104 X 697 X 15 MM	AÇO/STEEL/ACERO - BRANCO/WHITE/BLANCO	1
04-	3000001019	COSTA INF IPLD-70 BRA / 697 X 690 X 15 MM	AÇO/STEEL/ACERO - BRANCO/WHITE/BLANCO	1
05-	3000001022	TETO/FUNDO IPLD-70 BRA / 698 X 254 X 20 MM	AÇO/STEEL/ACERO - BRANCO/WHITE/BLANCO	7
06-	3000001013	CALHA SUPERIOR IPLD-70 BRA / 692 X 24 X 20 MM	AÇO/STEEL/ACERO - BRANCO/WHITE/BLANCO	2

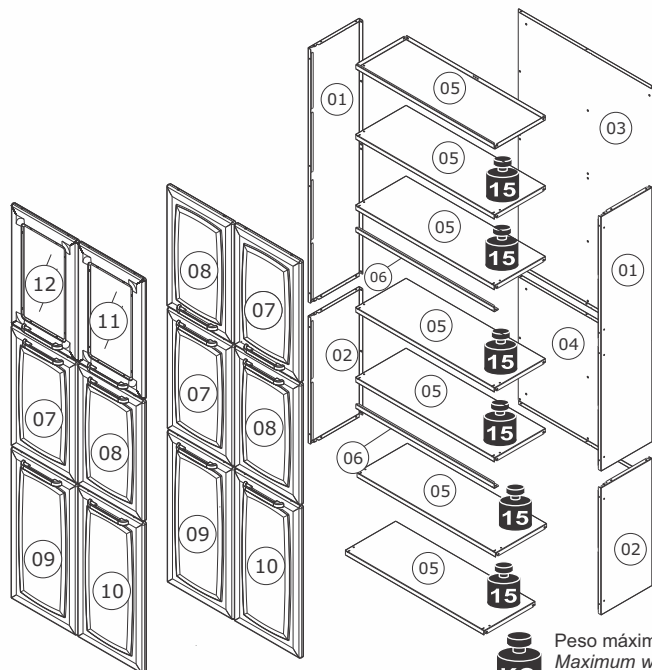
PORTAS / DOORS / PUERTAS				
07-	3000002632	PORTA SS MED-35 ANITA BRA / 547 X 347 X 20 MM	AÇO/STEEL/ACERO - BRANCO/WHITE/BLANCO	2
08-	3000002634	PORTA SS MED-35 ANITA BRA / 547 X 347 X 20 MM	AÇO/STEEL/ACERO - BRANCO/WHITE/BLANCO	2
09-	3000002621	PORTA SS ALTA-35 ANITA BRA / 685 X 347 X 20 MM	AÇO/STEEL/ACERO - BRANCO/WHITE/BLANCO	1
10-	3000002623	PORTA SS ALTA-35 ANITA BRA / 685 X 347 X 20 MM	AÇO/STEEL/ACERO - BRANCO/WHITE/BLANCO	1
11-	3000008879	PORTA SS VIDRO INC MED-35 ANITA BRA / 547 X 347 X 20 MM	VIDRO/GLASS/VIDRIO - BRANCO/WHITE/BLANCO	1
	3000008886	PORTA SS VIDRO INC MED-35 ANITA PTO / 547 X 347 X 20 MM	VIDRO/GLASS/VIDRIO - PRETO/BLACK/NEGRO	1
	3000008912	PORTA SS VIDRO INC MED-35 ANITA VMR / 547 X 347 X 20 MM	VIDRO/GLASS/VIDRIO - VERMELHO/RED/ROJO	1
12-	3000008878	PORTA SS VIDRO INC MED-35 ANITA BRA / 547 X 347 X 20 MM	VIDRO/GLASS/VIDRIO - BRANCO/WHITE/BLANCO	1
	3000008883	PORTA SS VIDRO INC MED-35 ANITA PTO / 547 X 347 X 20 MM	VIDRO/GLASS/VIDRIO - PRETO/BLACK/NEGRO	1
	3000009023	PORTA SS VIDRO INC MED-35 ANITA VMR / 547 X 347 X 20 MM	VIDRO/GLASS/VIDRIO - VERMELHO/RED/ROJO	1



IPLDV-70 MX
Produto Montado:
A: 1794 mm L: 700 mm P: 280 mm



IPLD-70 MX
Produto Montado:
A: 1794 mm L: 700 mm P: 280 mm



KG Peso máximo suportado
Maximum weight supported
Peso máximo suportado

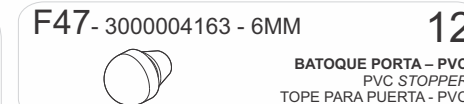
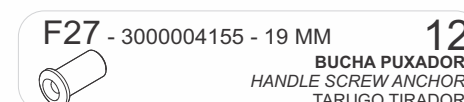
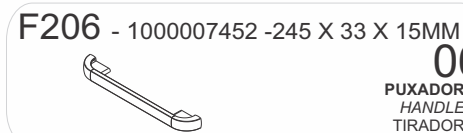
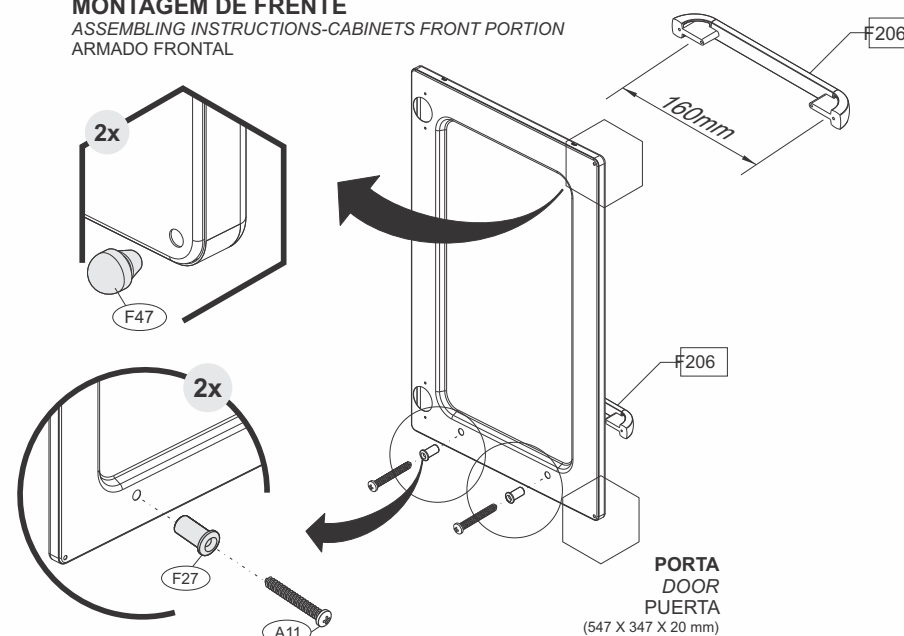
MONTAGEM DE FRENTE ASSEMBLING INSTRUCTIONS-CABINETS FRONT PORTION ARMADO FRONTAL

PORTA 07, 08, 09, 10, 11, 12 / Door 07, 08, 09, 10, 11, 12 / Puerta 07, 08, 09, 10, 11, 12

PUXADOR / MONTAGEM / DIMENSÃO
HANDLE / ASSEMBLING / DIMENSION
TIRADOR / ARMADO / DIMENSIÓN

PUXADOR / DIMENSÃO
HANDLE / DIMENSION
TIRADOR / DIMENSIÓN

MONTAGEM DE FRENTE ASSEMBLING INSTRUCTIONS-CABINETS FRONT PORTION ARMADO FRONTAL



BATOQUE PORTA - PVC
PVC STOPPER
TOPE PARA PUERTA - PVC