

# INSTRUÇÕES DE MONTAGEM

## MOUNTING INSTRUCTIONS

### INSTRUCCIONES DE MONTAJE

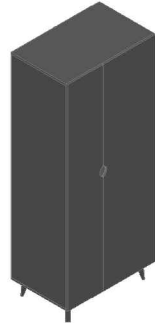
falkk@falkk.com.br  
+55 (54) 3361-4904  
www.falkk.com.br



# falkk

## ARMÁRIO PUMA

### ARMARIO PUMA / PUMA WARDROBE



## VOCÊ VAI PRECISAR

WILL BE NEED / SE NECESITA



**01 PESSOA**  
01 PERSON  
01 PERSONA



**30 MINUTOS**  
30 MINUTES  
30 MINUTOS



**MARTELO**  
HAMMER  
MARTILLO



**CHAVE**  
DESTORNILLADOR  
SCREWDRIVER  
PHILIPS



**FURADEIRA**  
DRILLING MACHINE  
TALADRO  
ATORNILLADOR

## IMPORTANTE

IMPORTANT / IMPORTANT

1. Monte o produto Falkk em uma superfície limpa e plana. Utilize a própria embalagem para forrar a superfície de montagem a fim de não danificar o produto e a sua casa.

1. Mount the Falkk product on a clean, flat surface. Use the packaging itself to line up the mounting surface to avoid damaging the product and your home.

1. Monte o produto Falkk en una superficie limpia e plana. Utilizar una máquina de embalar para una superficie de montaje.

2. Evite danificar o produto com impactos ou objetos cortantes.

2. Avoid damaging the product with impacts or sharp objects.

2. Evite danificar el producto con impactos u objetos cortantes.

3. Para limpar, leia o Manual de Conservação.

3. To clean, read the Conservation Handbook.

3. Para limpiar, leia o Manual de Conservación.

### Acessórios / Accessories / Accesorios



**A. Cavilha 8x30 (36x)**  
a. Espiga 8x30 (36x)  
a. Peg 8x30 (36x)



**B. Minifix (24x)**  
b. Minifix (24x)  
b. Minifix (24x)



**C. Tambor (24x)**  
c. Tambor (24x)  
c. Drum (24x)



**D. Tampa Tambor (24x)**  
d. Tampa Cajita Minifix (24x)  
d. Minifix Housing Cover (24x)



**E. Dobradiça Porta(8x)**  
e. Bisagra Puerta (8x)  
e. Door Hinge (8x)



**F. Calço Módulo (8x)**  
f. Bisagra Módulo (8x)  
f. Shim Module (8x)



**G. Parafuso Oval Ø4x16(8x)**  
g. Tornillo Ovalado Ø4x16 (8x)  
g. Oval Screw Ø4x16 (8x)



**H. Parafuso Ø4x25 (8x)**  
h. Tornillo Ø4x25 (8x)  
h. Screw Ø4x25 (8x)



**I. Parafuso Ø4x40(8x)**  
i. Tornillo Ø4x40 (8x)  
i. Screw Ø4x40 (8x)



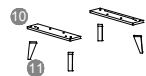
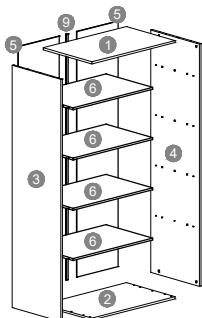
**J. Prego (74x)**  
j. Clavo (74x)  
j. Nail (74x)



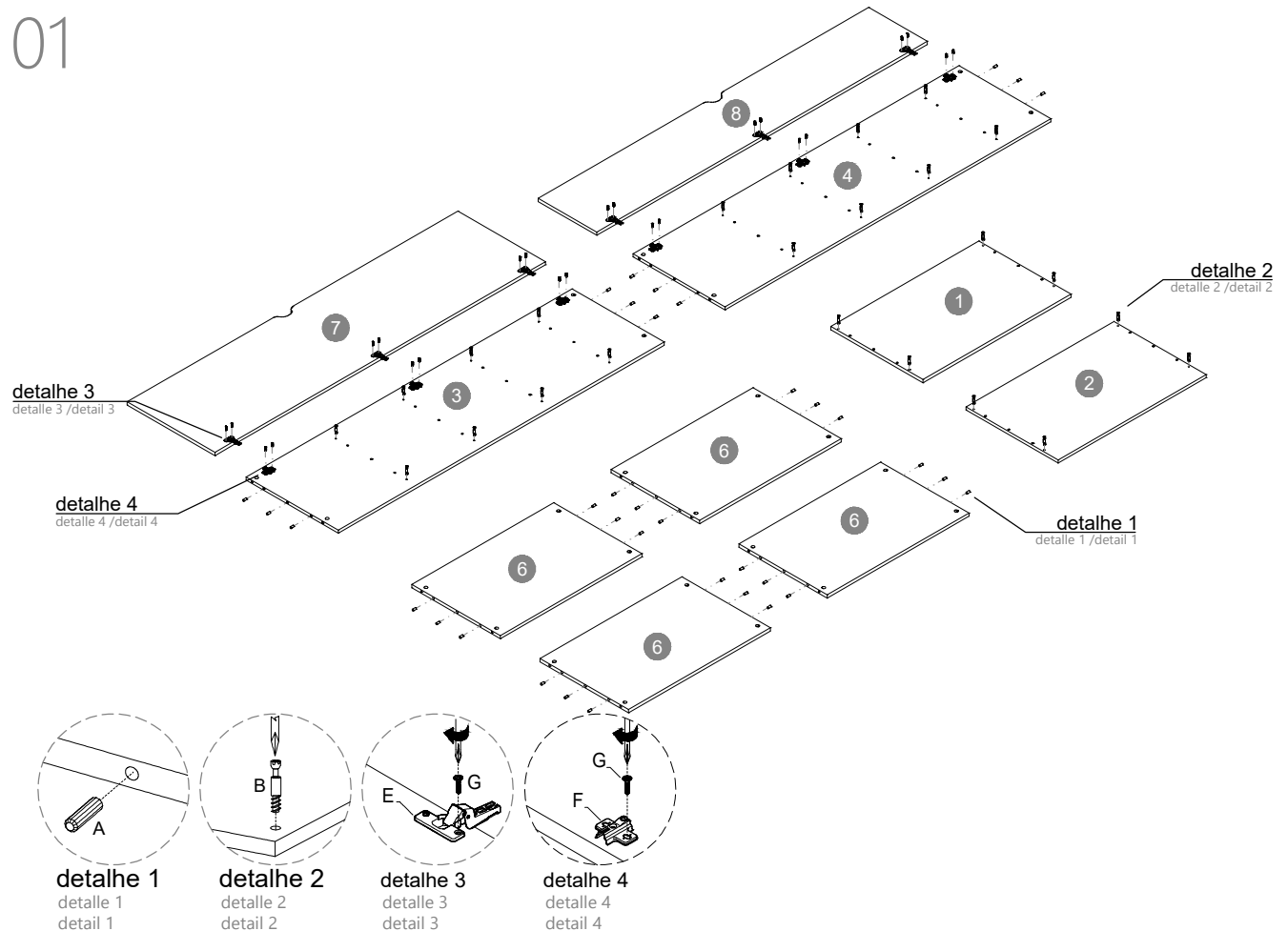
**K. Batente Silicone (4x)**  
k. Protección de Silicona (4x)  
k. Silicone Protection (4x)

### Partes do produto / Parts of the product / Partes del producto

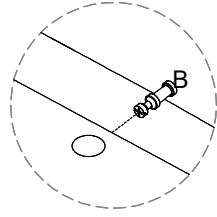
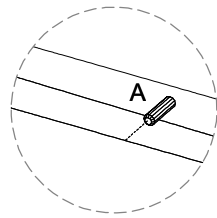
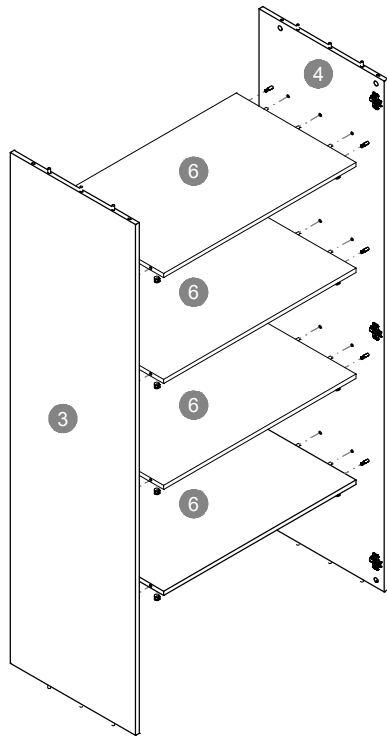
- 1 Tampo / tapa / top (1x)
- 2 Base / base / base (1x)
- 3 Lateral esquerda / Lateral izquierdo / Left side(1x)
- 4 Lateral direita / Lateral derecho / Right side (1x)
- 5 Fundo / Fondo / Bottom (2x)
- 6 Prateleira / Repisa / Shelf (4x)
- 7 Porta A / Puerta A / Door A (1x)
- 8 Porta B / Puerta B / Door B (1x)
- 9 Perfi H / Perfil H / Profile H (1x)
- 10 Travessa pé / Travessa pie / Foot pedestal (2x)
- 11 Pés / pies / feet (4x)



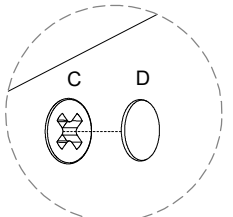
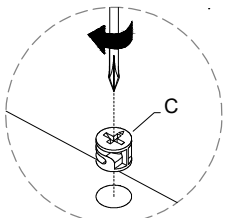
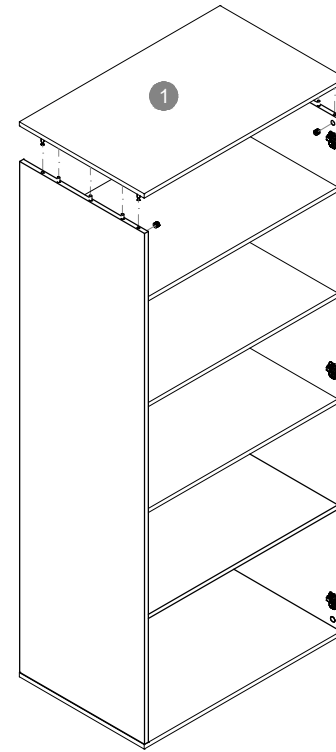
# 01



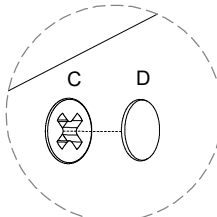
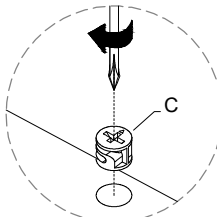
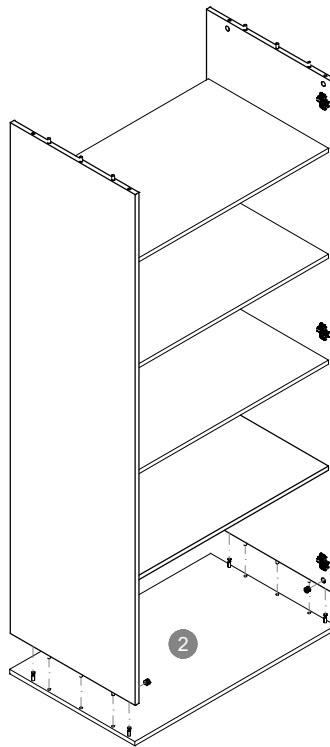
02



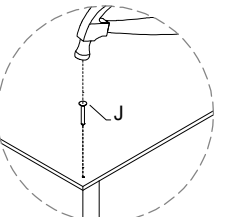
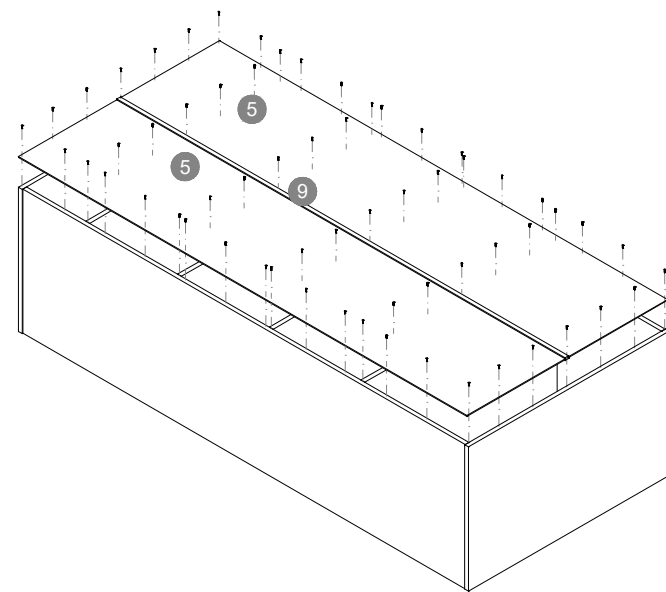
04



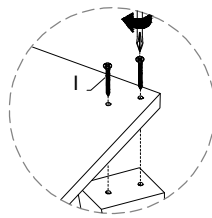
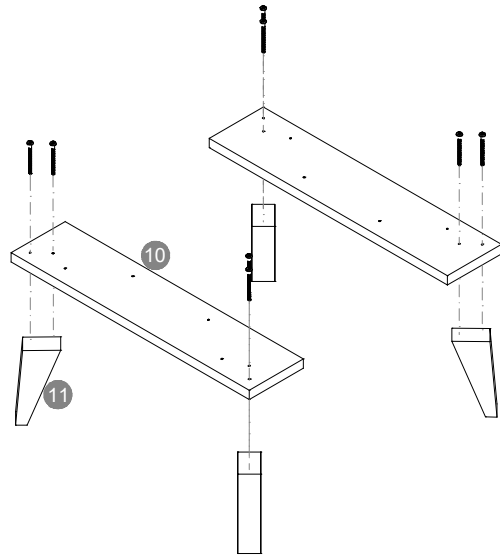
03



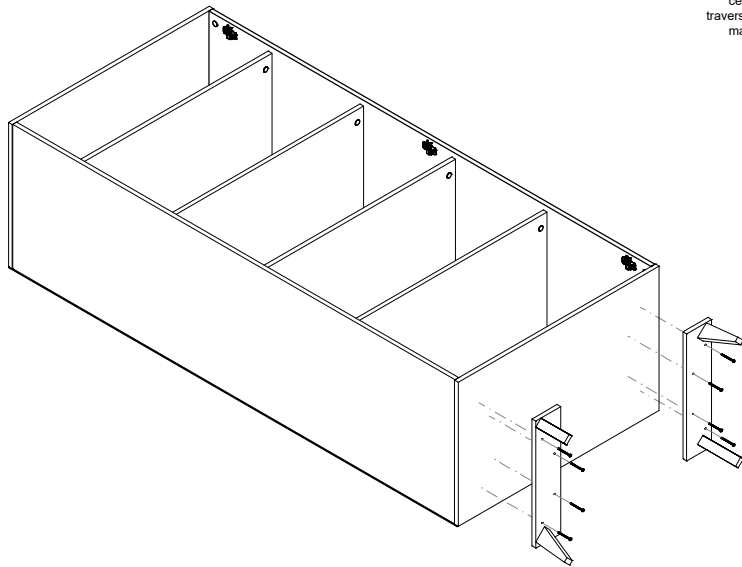
05



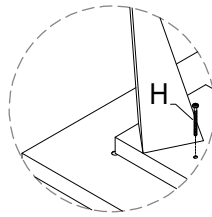
06



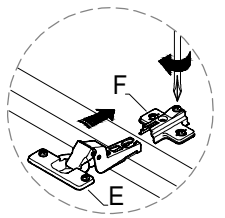
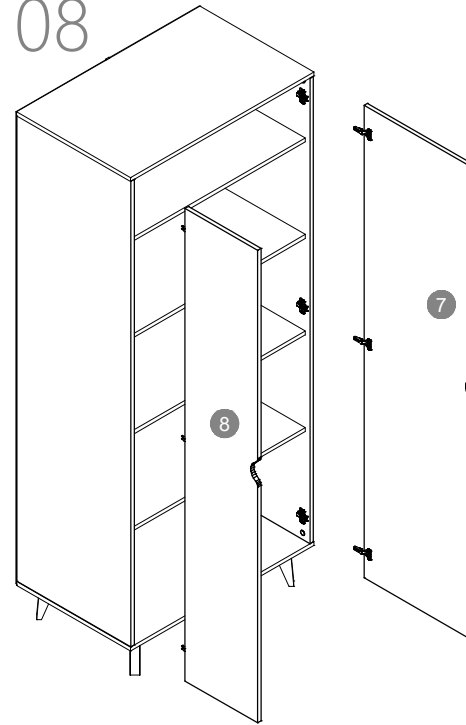
07



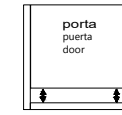
centralizar  
travessa entre  
marcações  
centralizar  
travesaño entre  
marcas  
centering  
traverse between  
markings



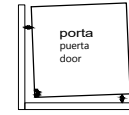
08



Regulagem das portas  
Ajuste de las puertas  
Door adjustment



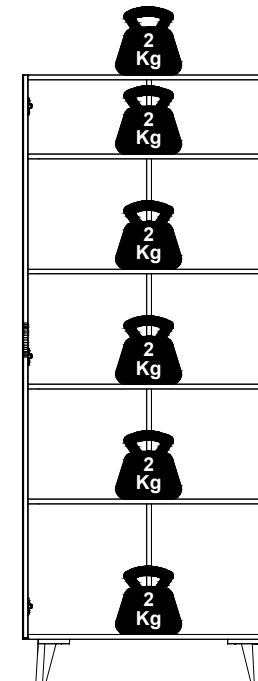
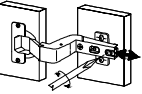
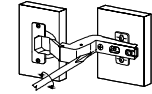
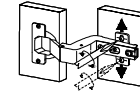
Ajuste de Altura  
Ajuste de Altura  
Height Adjustment



Ajuste interno  
Ajuste Interno  
Internal Adjustment



Ajuste de Profundidade  
Ajuste de Profundidad  
Depth Adjustment



Carga máxima suportável  
Carga máxima admisible  
Maximum load withstand

