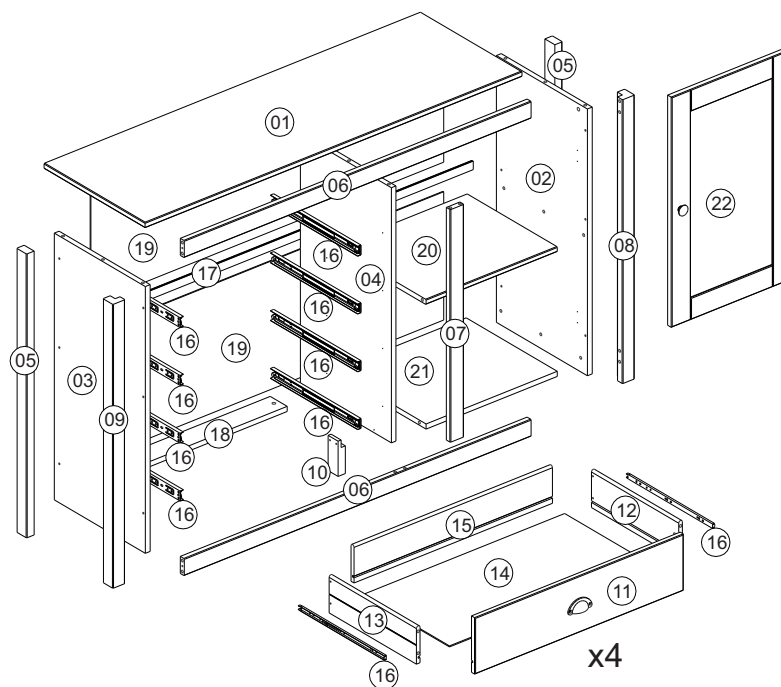
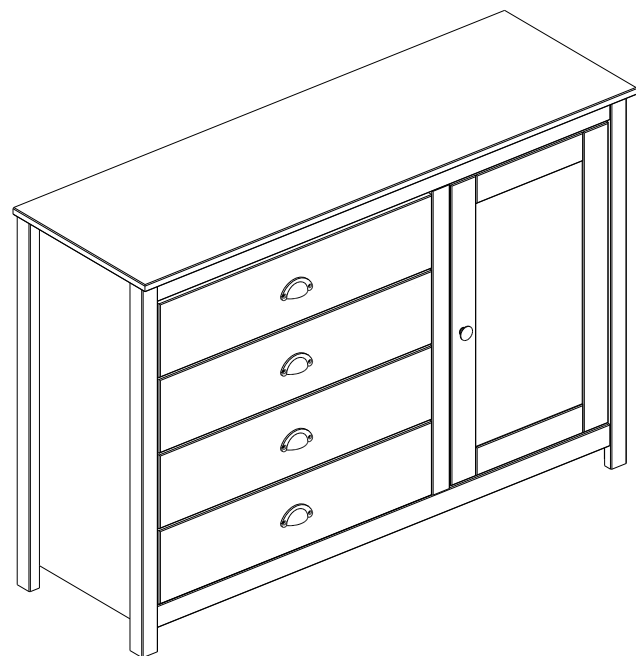
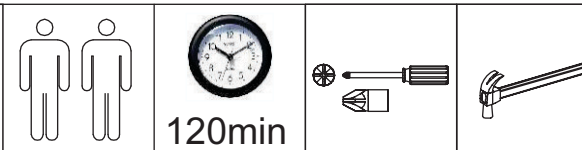


INSTRUÇÃO DE MONTAGEM Assembly Instruction / Instrucciones de montaje

CÔMODA SAPATEIRA 4 GAVETAS 1 PORTA TOPÁZIO

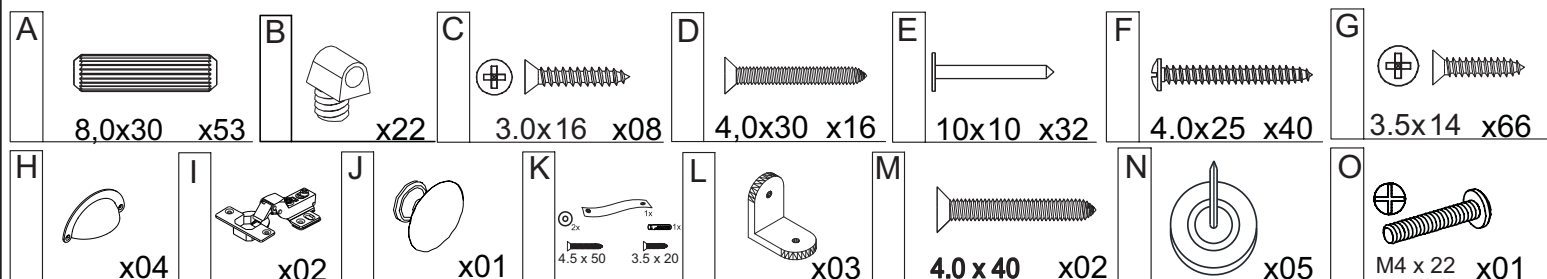
Ref.:9149 Dresser with shoe storage, 4 drawers and 1 door / Cómoda zapatera con 4 cajones y 1 puerta



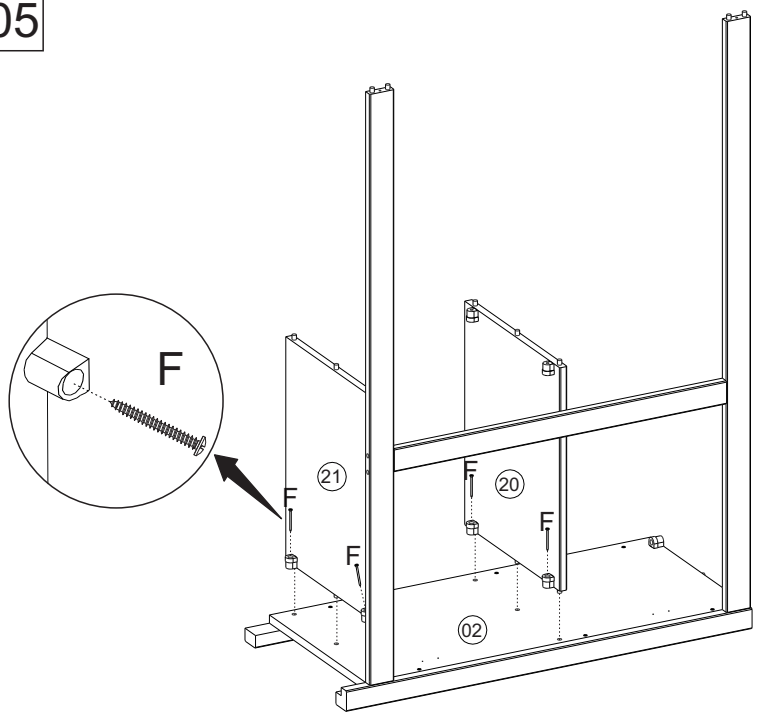
Lista de peças Parts list / Liste de piezas

	QT.
1- TAMPO <i>Top / Tapa superior</i>	01
2- LATERAL DIREITA <i>Right side / Lateral derecho</i>	01
3- LATERAL ESQUERDA <i>Left side / Lateral izquierdo</i>	01
4- DIVISÓRIA <i>Division / Divisoria</i>	01
5- PÉ TRASEIRO <i>Back feet / Pies trasero</i>	02
6- TRAVESSA FRONTAL HORIZONTAL <i>Horizontal front crossbeam / Travesaño frontal horizontal</i>	02
7- TRAVESSA FRONTAL VERTICAL <i>Vertical front crossbeam / Travesaño frontal vertical</i>	01
8- PÉ FRONTAL DIREITO <i>Right front foot / Pie frontal derecho</i>	01
9- PÉ FRONTAL ESQUERDO <i>Left front foot / Pie frontal izquierdo</i>	01
10- PÉ CENTRAL <i>Center foot / Pie central</i>	01
11- FRENTE GAVETA <i>Drawer front / Frente cajon</i>	04
12- LATERAL GAVETA DIREITA <i>Drawer right side / Lateral derecho cajon</i>	04
13- LATERAL GAVETA ESQUERDA <i>Drawer left side / Lateral izquierdo cajon</i>	04
14- BASE GAVETA <i>Drawer base / Base cajon</i>	04
15- TRASEIRO GAVETA <i>Drawer back / Trasero cajon</i>	04
16- CORREDIÇAS <i>Drawer runner / Carril metalico</i>	08
17- PERFIL <i>Back strut / Puntal trasero</i>	01
18- TRAVESSA TRASEIRA INFERIOR <i>Bottom back crossbeam / Travessano trasero inferior</i>	01
19- FORRO TRASEIRO <i>Back panel / Panel trasero</i>	02
20- PRATELEIRA <i>Shelf / Estante</i>	01
21- BASE <i>Base / Base</i>	01
22 - PORTA <i>Door / Puerta</i>	01

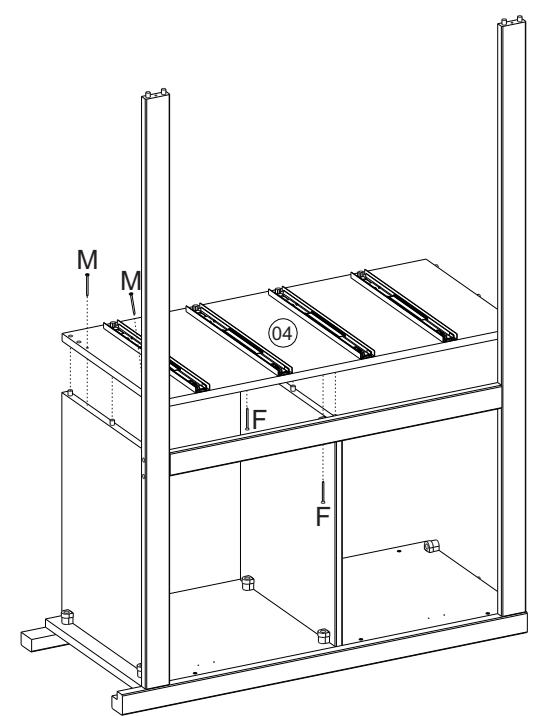
V.:01



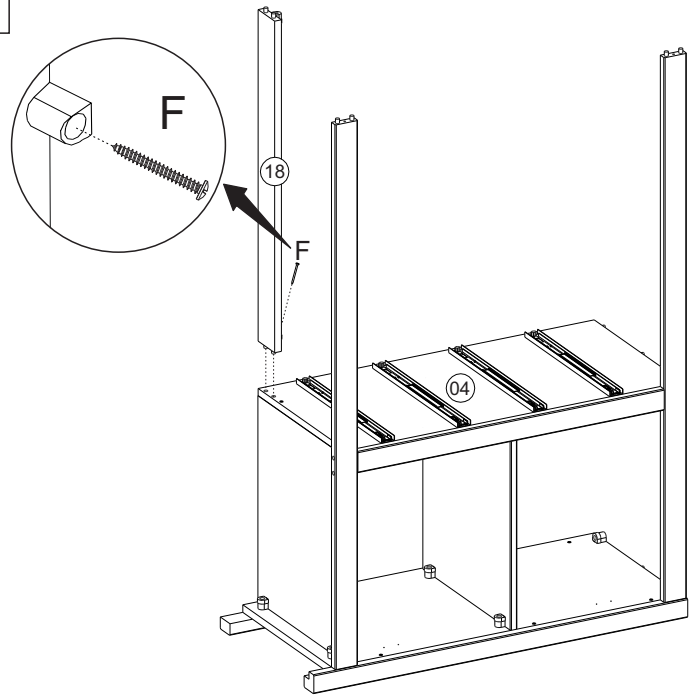
05



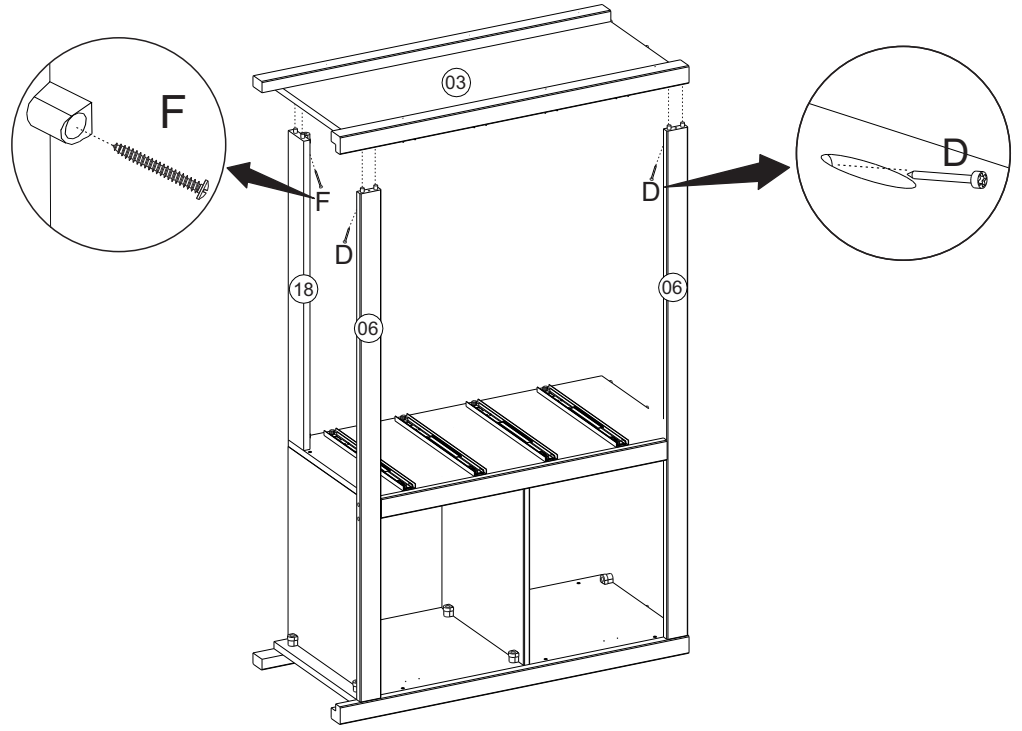
06



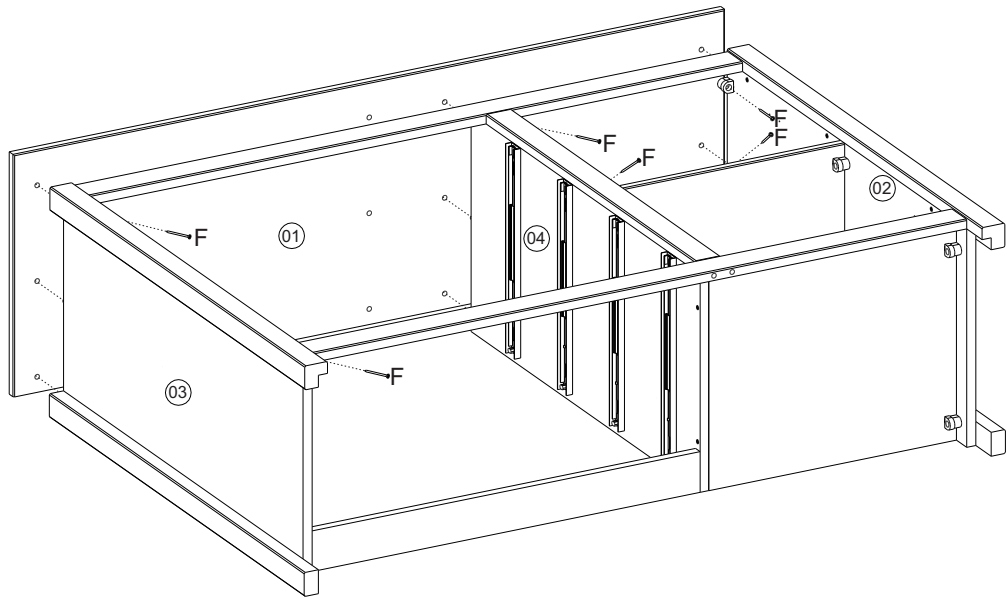
07



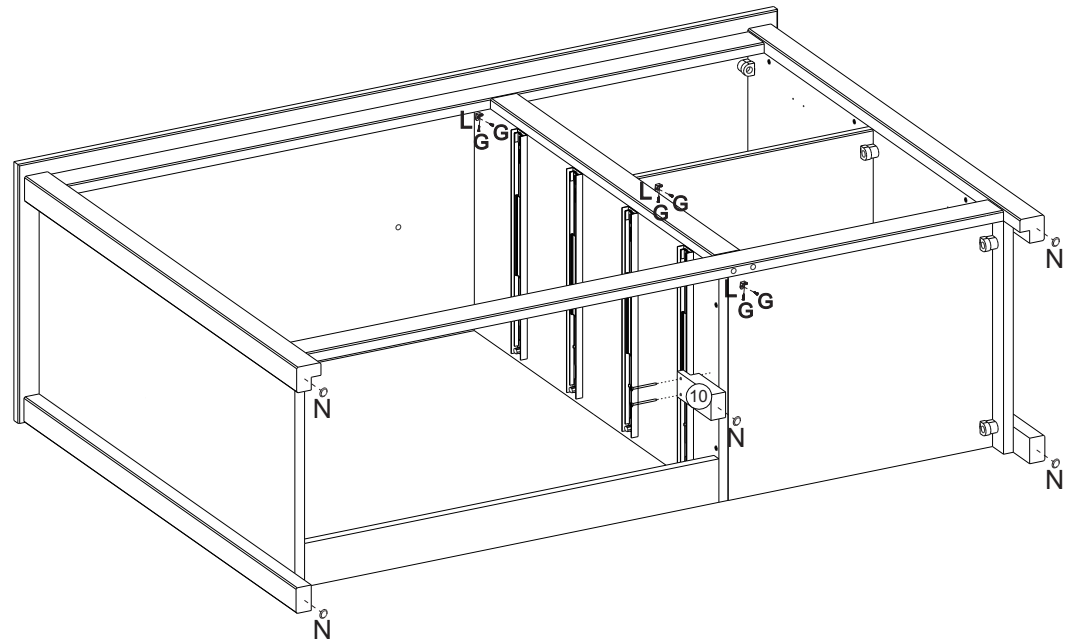
08



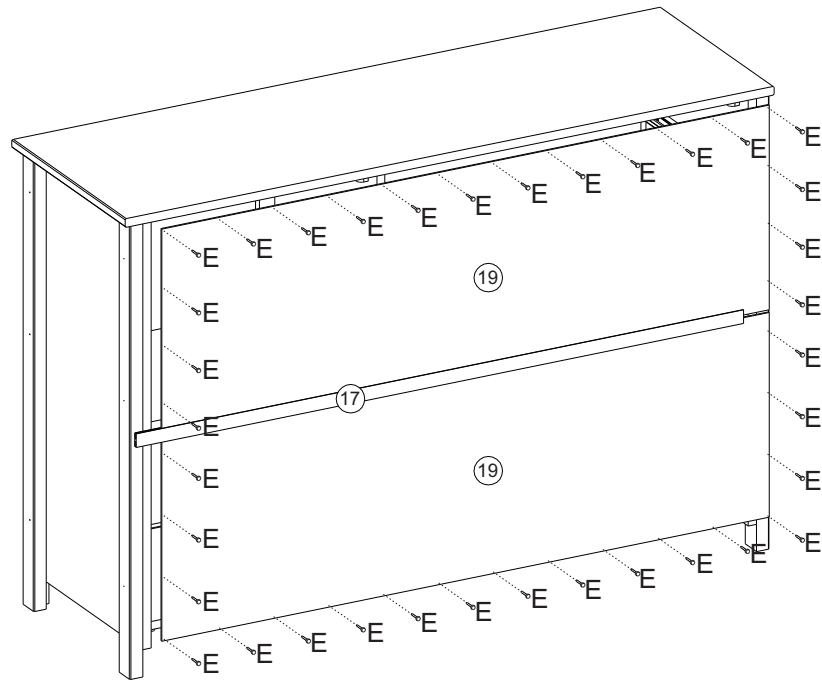
09



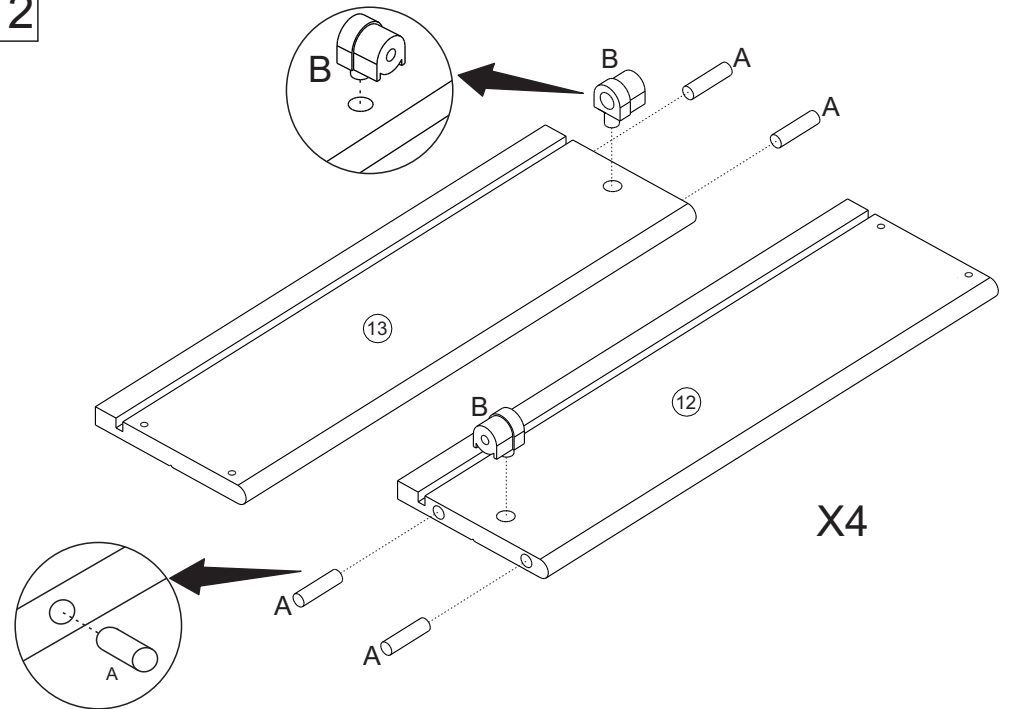
10



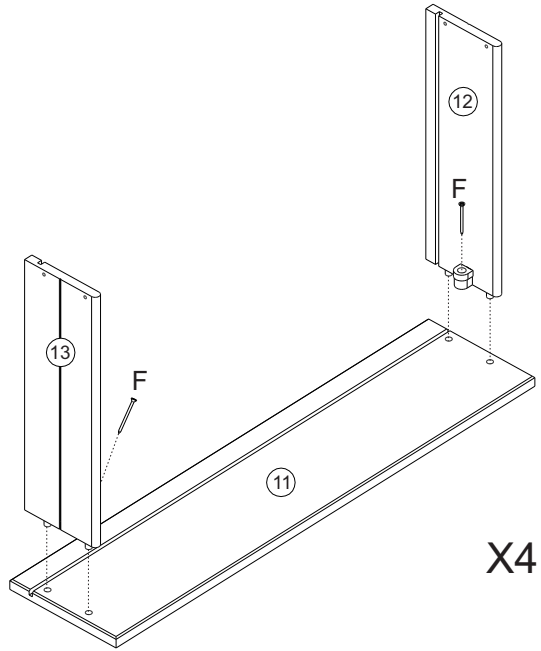
11



12

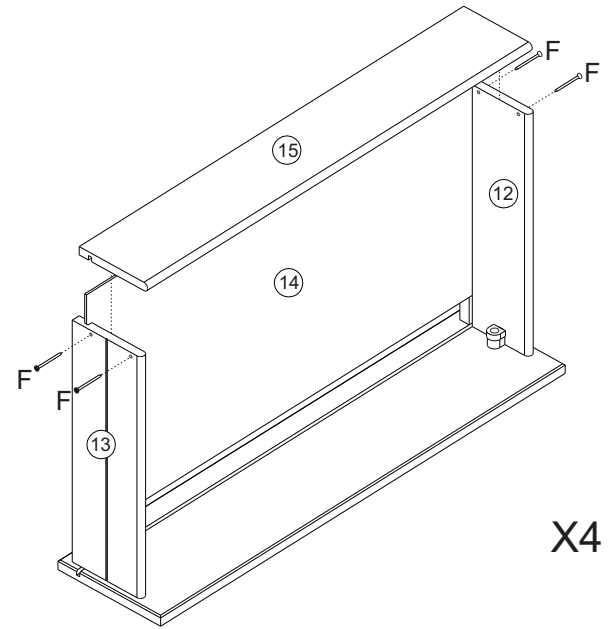


13



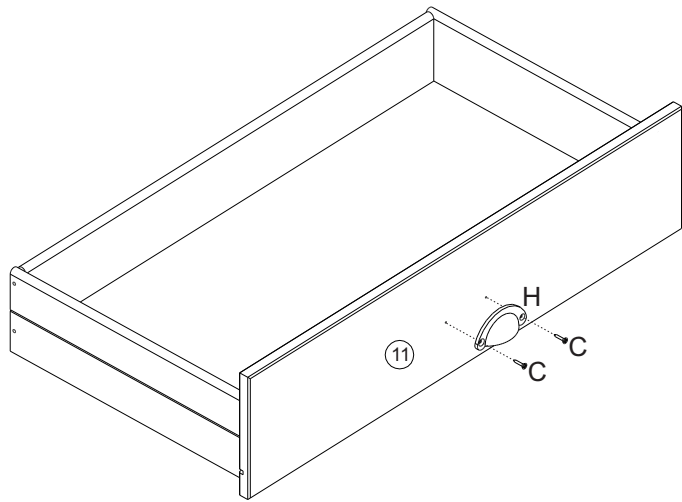
X4

14



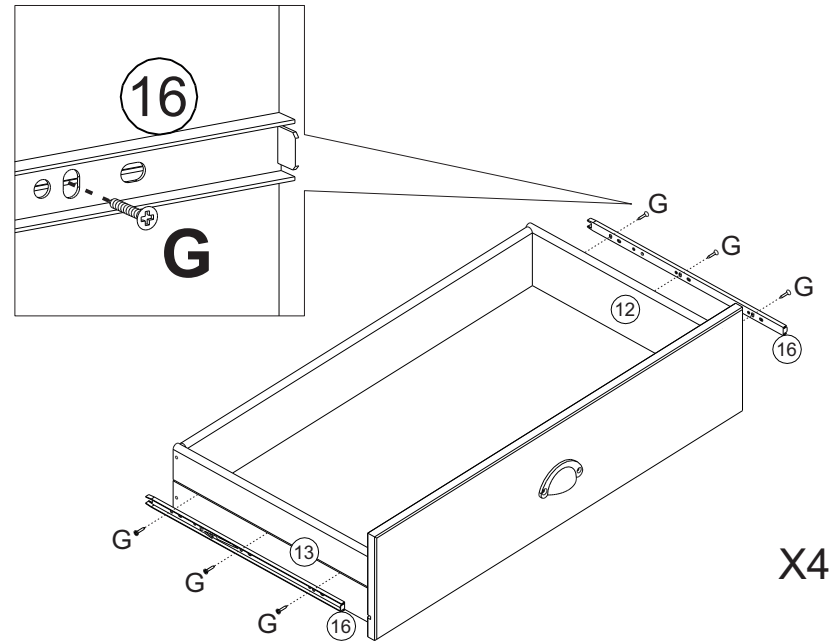
X4

15



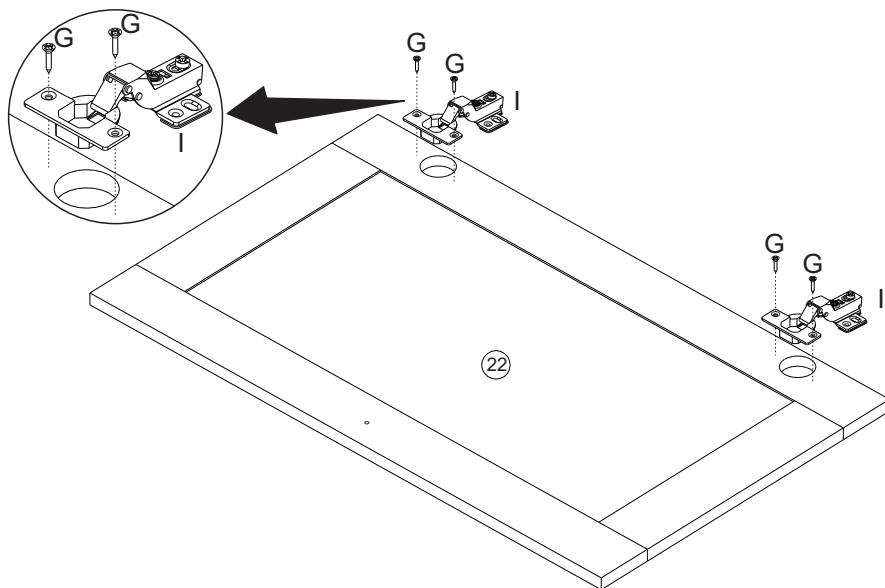
X4

16



X4

17



18

⚠️ ATENÇÃO

Risco de acidente grave ou sequelas permanentes se o móvel tombar. Para evitar e eliminar o risco, é essencial seguir as seguintes instruções.

- Nunca permita que as crianças subam ou se penduram nas gavetas, portas ou prateleiras do móvel;
- **Utilize a ferragem anti tombamento para reduzir ou eliminar o risco de tombamento deste produto.**

O tipo de parafusos para a fixação de mobiliário na parede, depende do material de parede e não são fornecidos. Em caso de dúvidas, consulte um especialista.

⚠️ ATTENTION

Risk of serious accident or permanent sequelae if the mobile topple over. To avoid and eliminate the risk, it is essential follow the following instructions.

- Never allow children to climb or hang from the furniture drawers, doors or shelves;
- **Use anti-tip hardware to reduce or eliminate the risk of this product tipping over.**

The type of screws for fixing furniture to the wall, depends on wall material and are not provided. If in doubt, consult an expert.

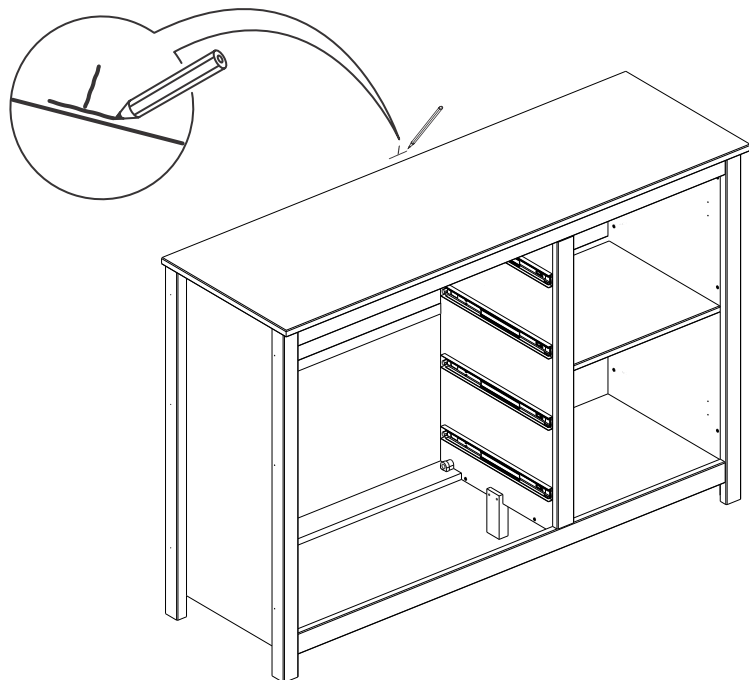
⚠️ ATENCIÓN

Riesgo de accidente grave o secuelas permanentes si el móvel cae. Para evitar y eliminar el riesgo, es fundamental siga las siguientes instrucciones.

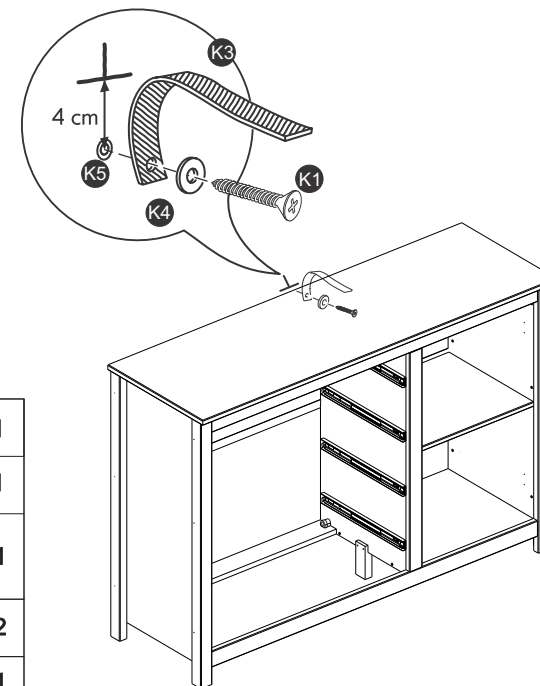
- Nunca permita que los niños trepen o se cuelgan del muebles cajones, puertas o estantes;
- **Utilice herrajes antivuelco para reducir o elimine el riesgo de que este producto se vuelque.**

El tipo de tornillos para fijar muebles a la pared, depende del material de la pared y no se proporcionan. En caso de duda, consulte a un experto.

19

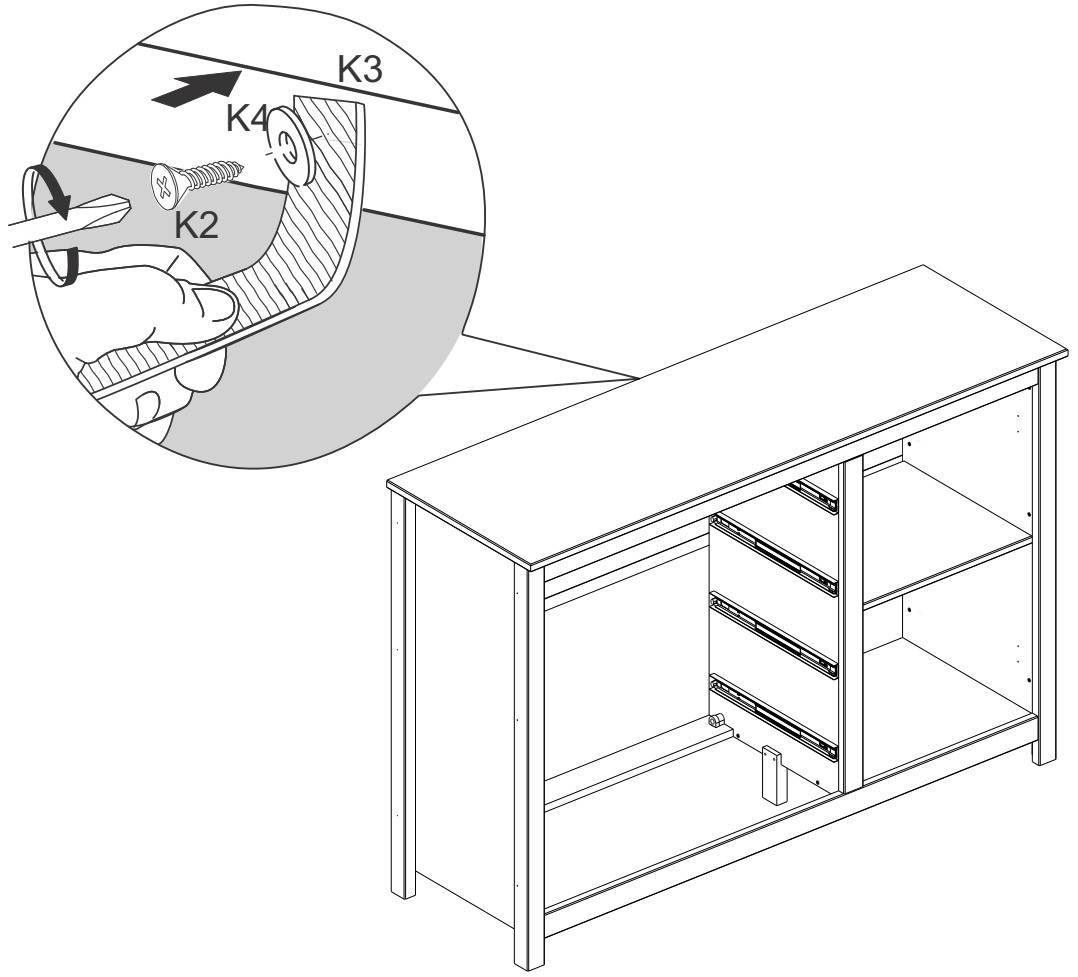


20

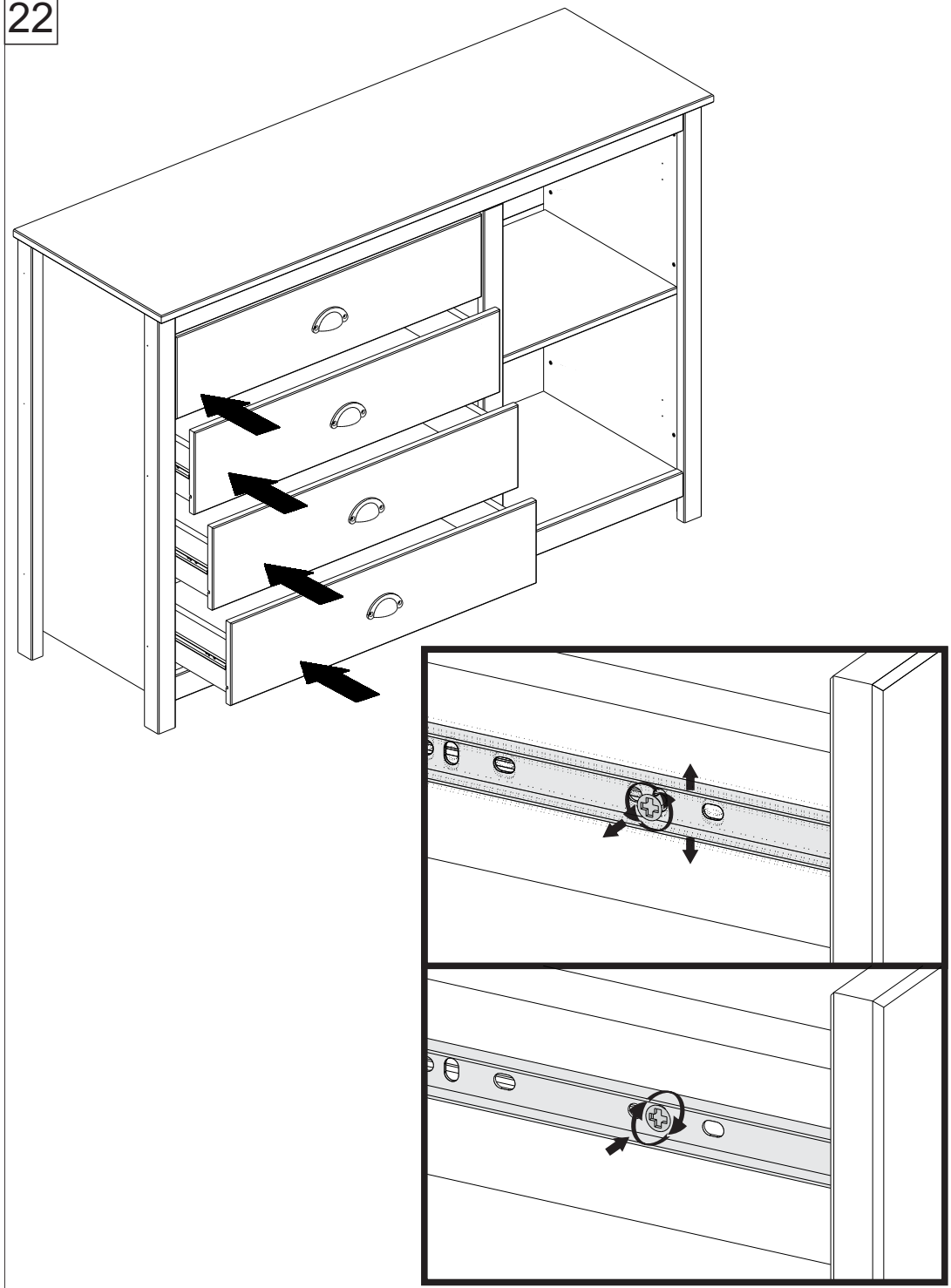




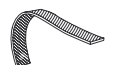


K1		01
K2		01
K K3		01
K4		02
K5		01

21

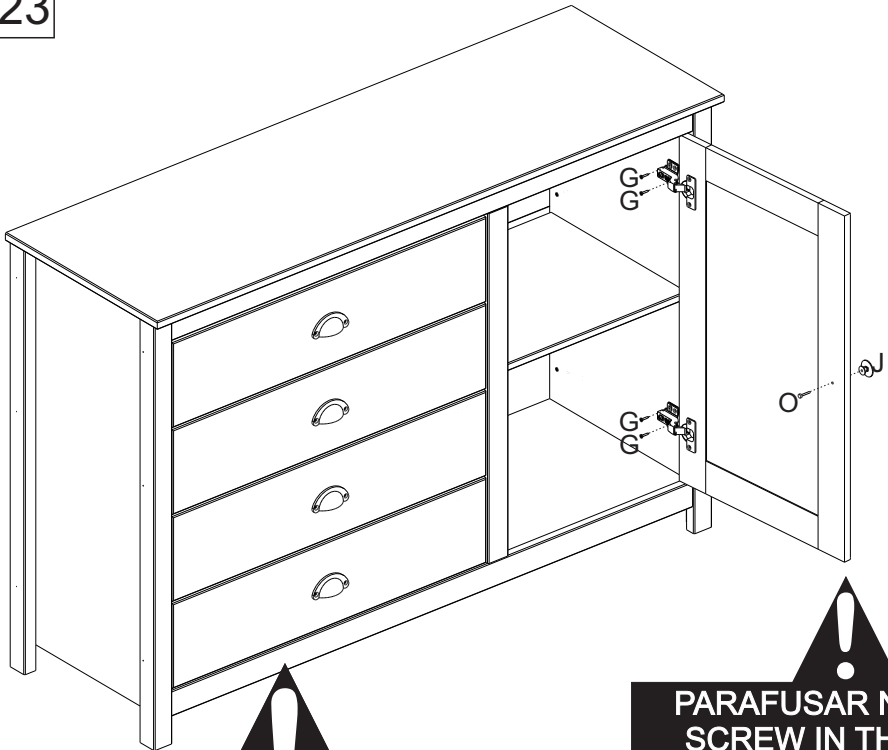


22

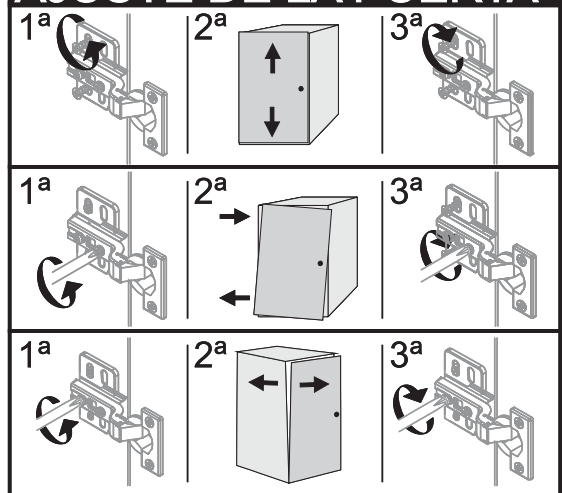


K1		01
K2		01
K3		01
K4		02
K5		01

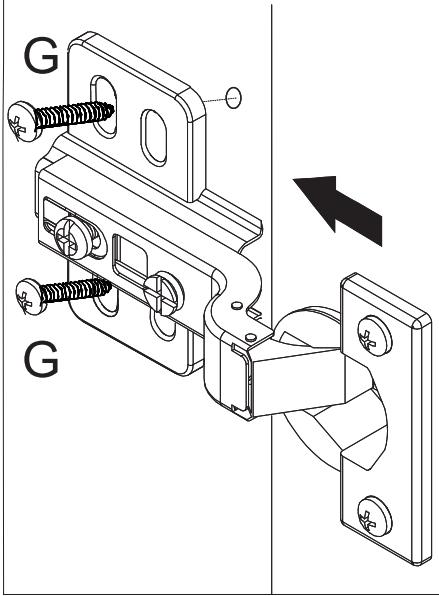
23



REGULAGEM DA PORTA
DOOR ADJUSTMENT
AJUSTE DE LA PUERTA



PARAFUSAR NO FURO
SCREW IN THE HOLE
TORNILLO EN EL AGUJERO



24

