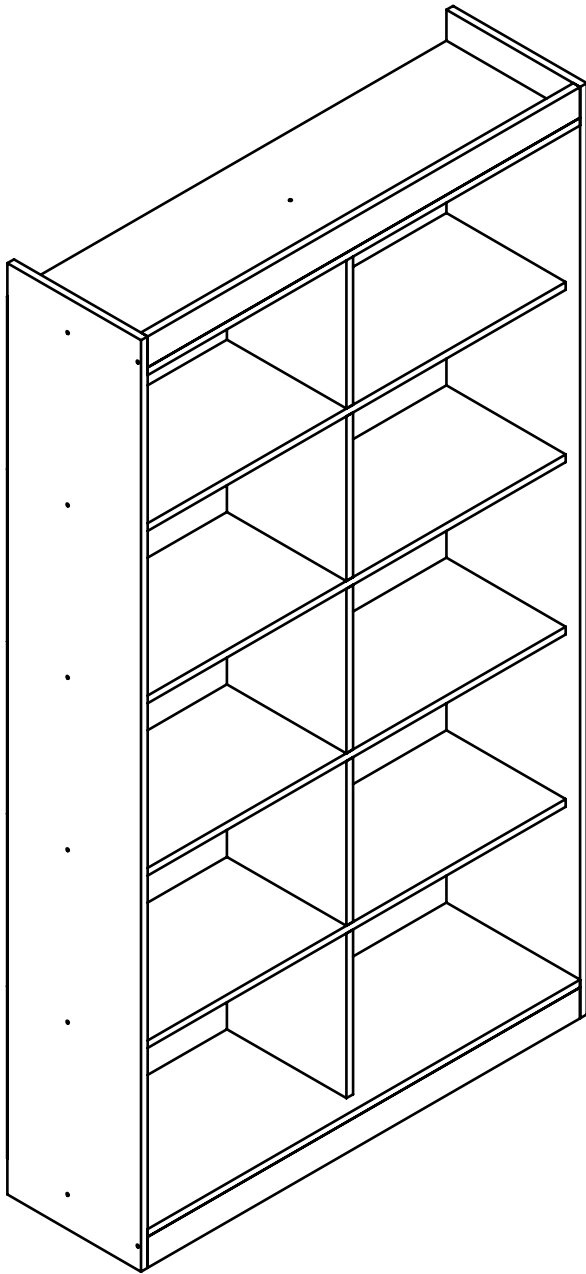


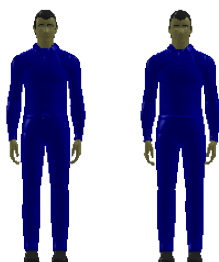
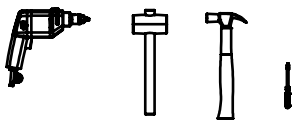
INSTRUÇÕES DE MONTAGEM HO-2939



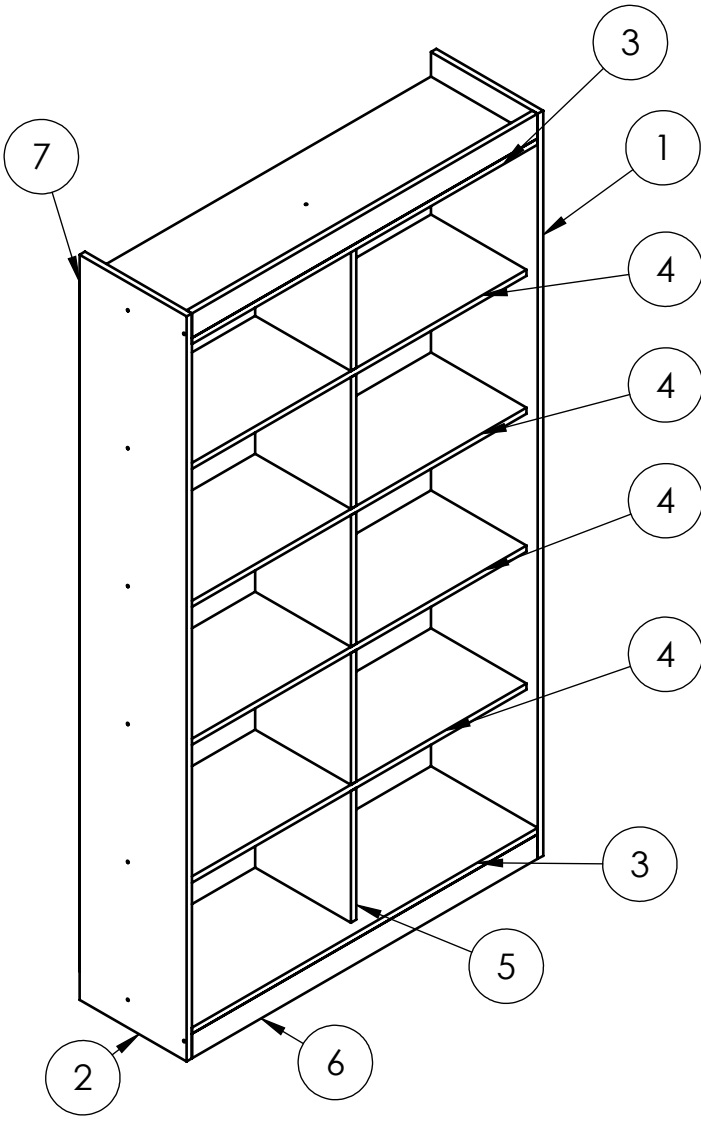
DICAS DE CONSERVAÇÃO

- Não utilizar na limpeza produtos abrasivos tais como: palha de aço, álcool, vinagre, limão, saponáceo, ou produtos corrosivos que possam riscar ou descolar a película protetora dos móveis;
- Na limpeza de móveis em geral, deve ser utilizado um pano levemente umedecido e sabão neutro;
- Para a movimentação do móvel, é importante que este seja levantado do chão, pois ao arrastá-lo pode causar avarias estruturais;
- Não deixe o móvel em exposição a intempéries;

Ferramentas



30 MIN



Nº	DESCRIÇÃO	QTD.
1	Lateral Direita	1
2	Lateral Esquerda	1
3	Base Maior	2
4	Base Menor	4
5	Divisão	5
6	Rodapé	2
7	Costa	5

cc-cabeça chata cp-cabeça panela cf-cabeça flangeada



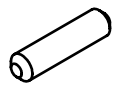
A	Parafuso 4,5x45 CC	18
----------	-----------------------	----



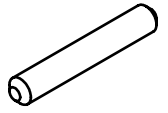
B	Parafuso 5x60 CF	1
----------	---------------------	---



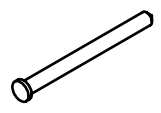
C	Parafuso 3,5x12 CP	4
----------	-----------------------	---



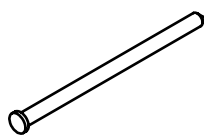
D	Cavilha Madeira 8x30	32
----------	-------------------------	----



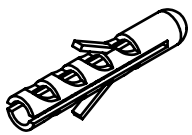
E	Cavilha Madeira 8x50	8
----------	-------------------------	---



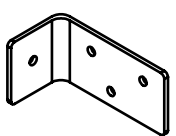
F	Pregão 10x10 c/ cabeça	80
----------	---------------------------	----



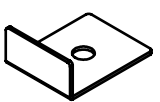
G	Pregão 10x15 c/ Cabeça	6
----------	---------------------------	---



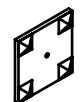
H	Bucha	1
----------	-------	---



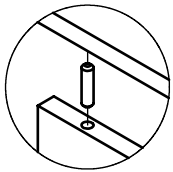
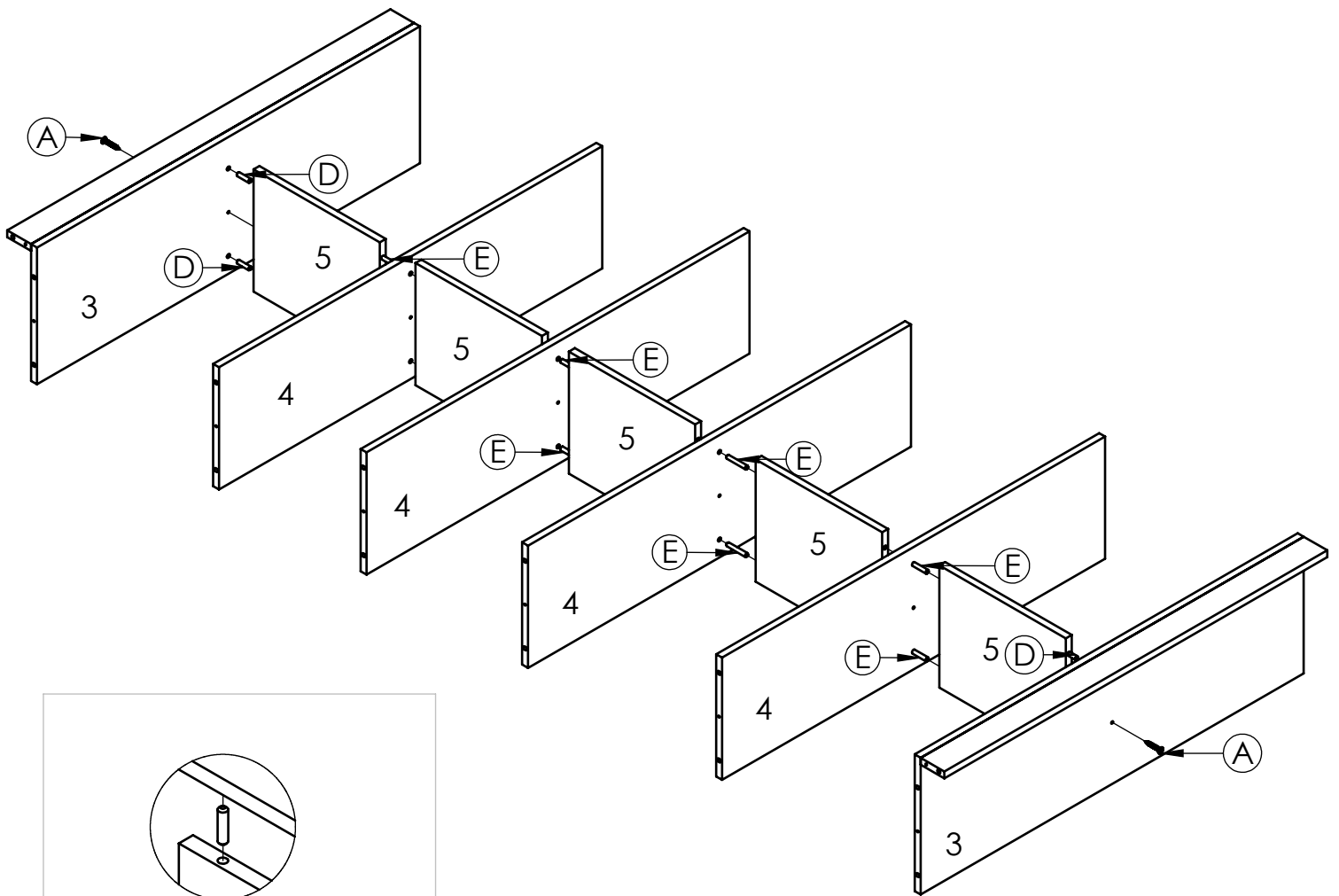
i	Suporte Fixação	1
----------	-----------------	---



j	Sapata Plástica "L"	6
----------	---------------------	---

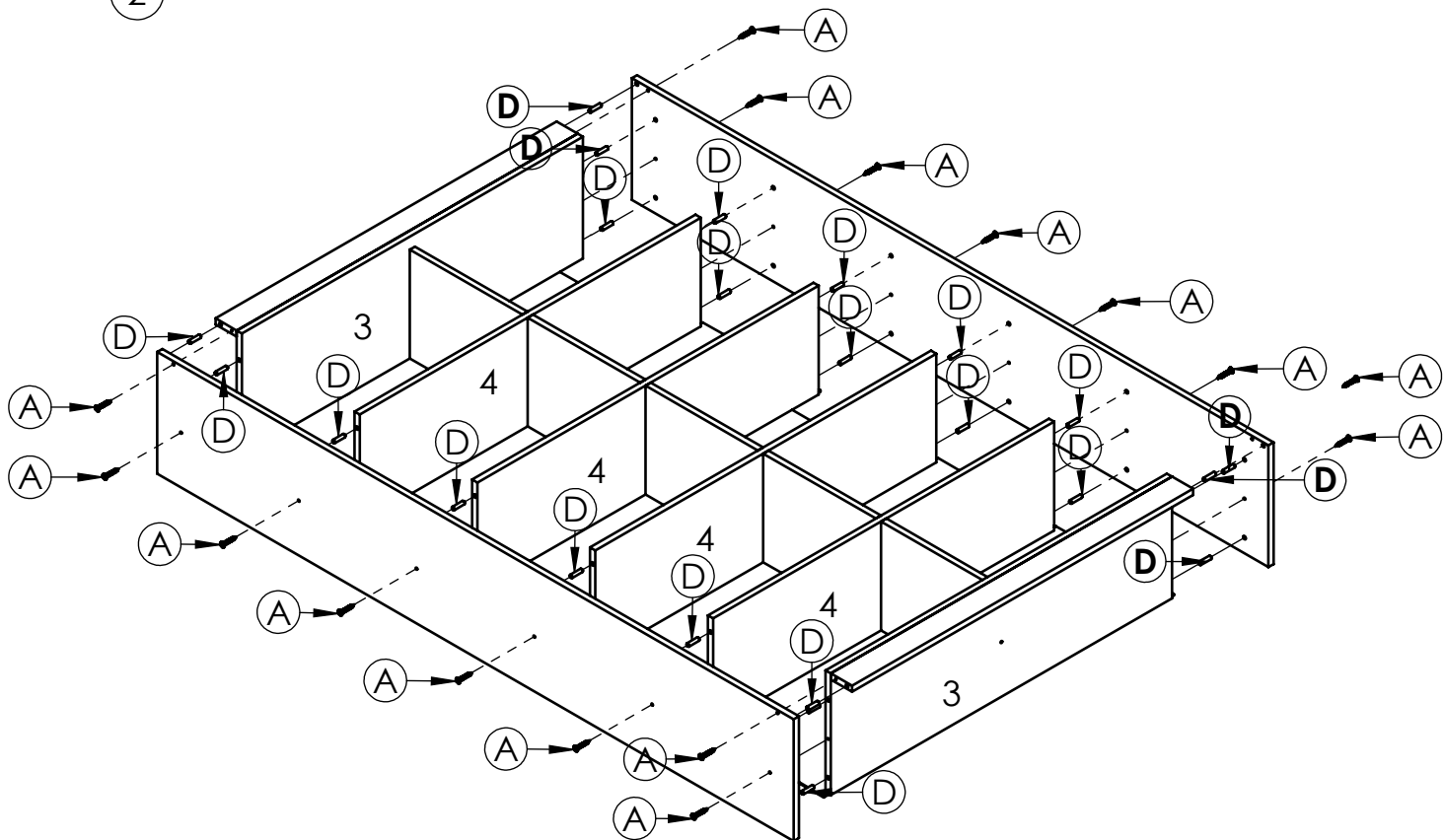


K	Garra Costa	24
----------	----------------	----

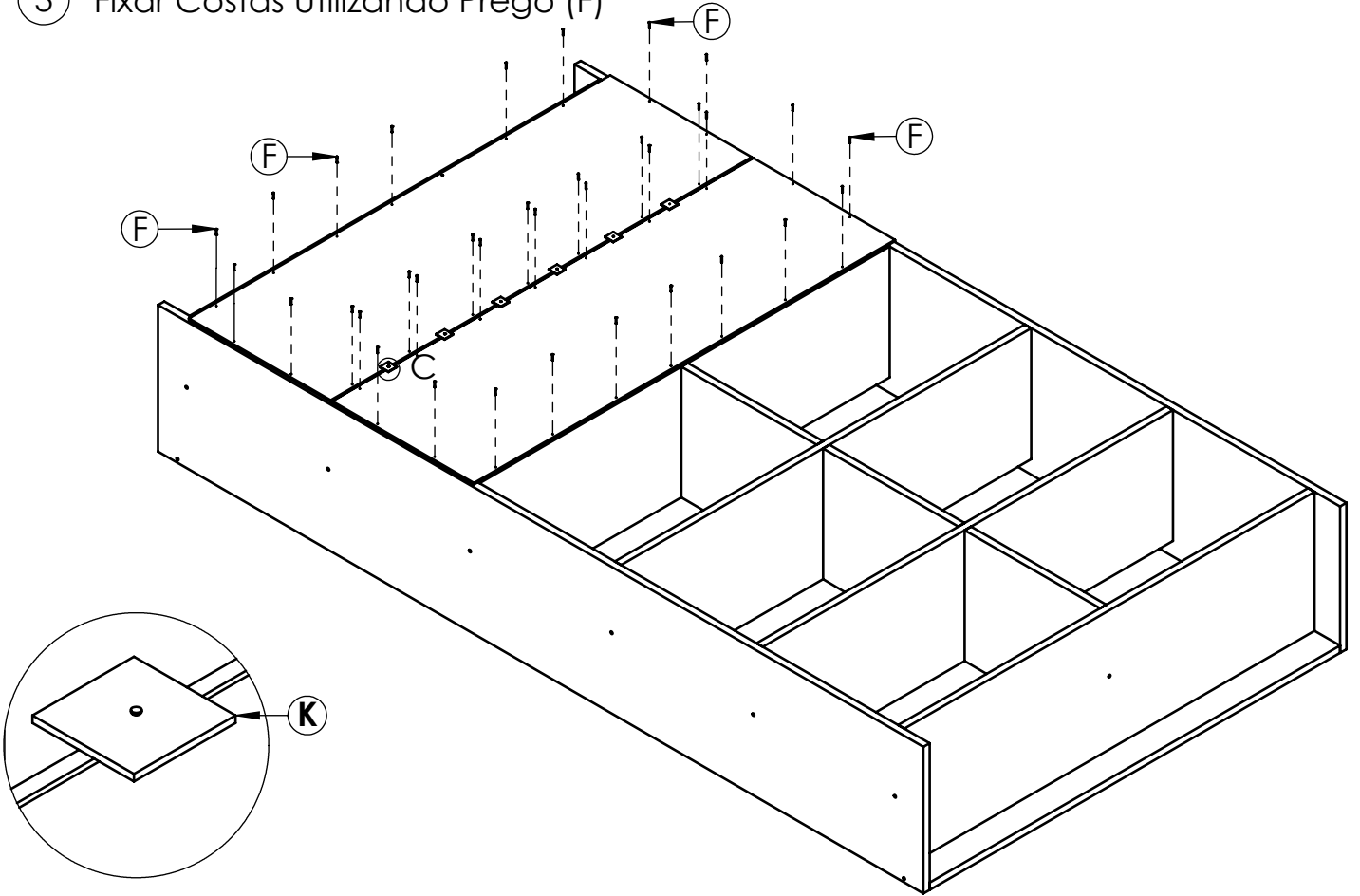


Utilizar Cola nas Cavilhas

2



3 Fixar Costas Utilizando Prego (F)



4

