



**LIVREIRO**  
**LIBRERO**  
**BOOK CASE**  
**BL 03**



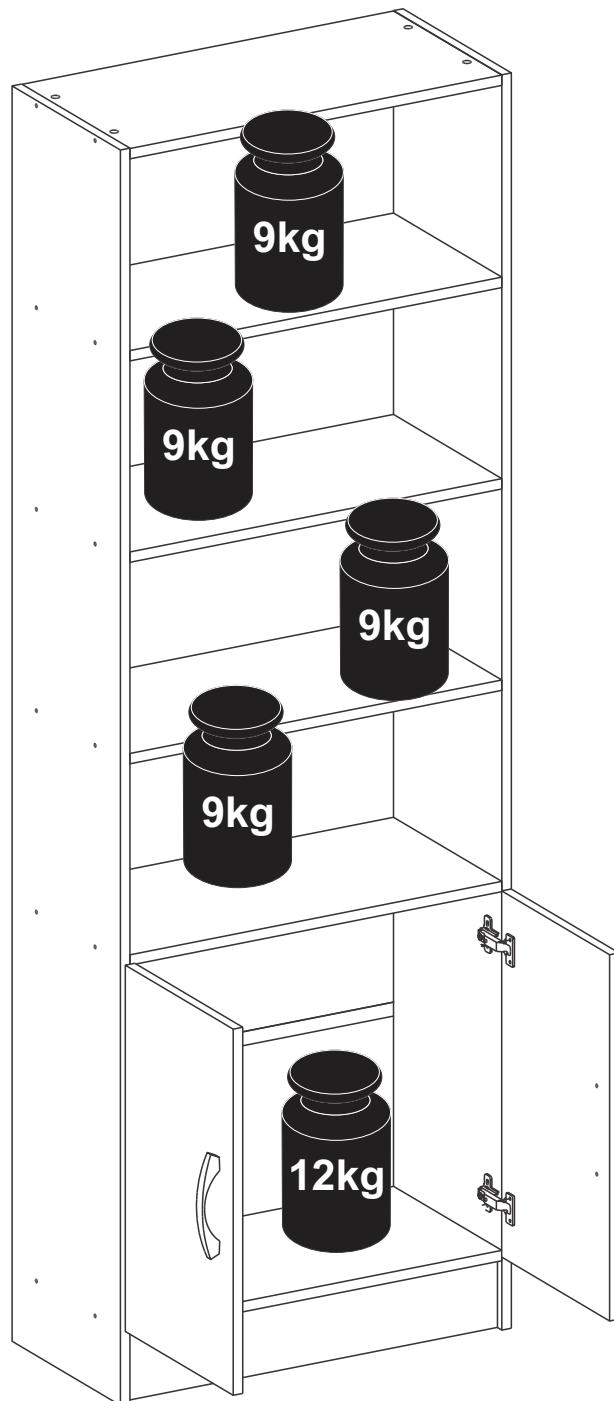
[www.brvmoveis.com.br](http://www.brvmoveis.com.br)

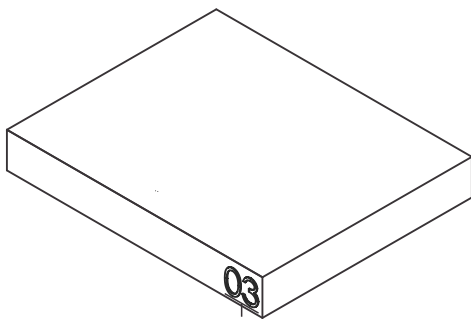
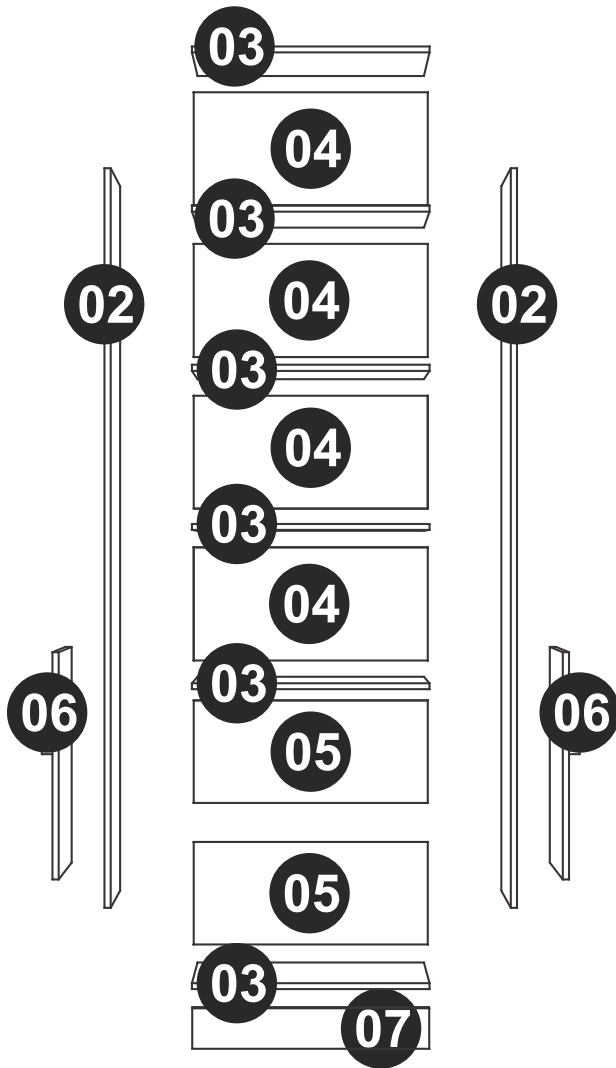
Rua Fioravante Pozza, 404 - Bairro Maria Goretti - CEP 95707-056 - Bento Gonçalves, RS - Fone/Fax 54 2102.5300

Dimensions:

W: 24.41" H: 71.85" D:12.2"




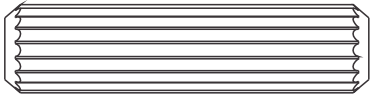

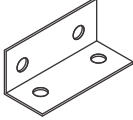


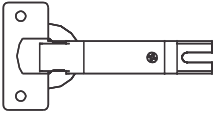

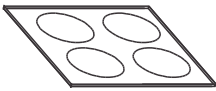
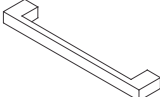

L:620 A:1825 P:310

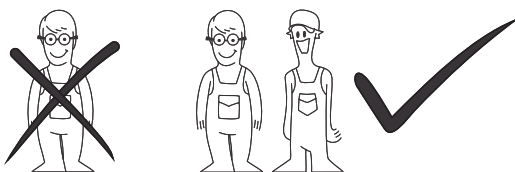
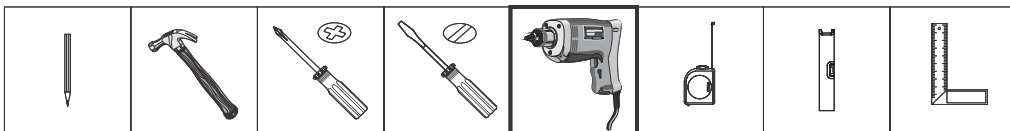




**USE ALCOHOL TO  
REMOVE PART  
NUMBERS**

PART	DESCRIPTION	QTY.
02	Side	02
03	Shelf	06
04	Longer back	04
05	Lower back	02
06	Door	02
07	Footer	01

PHOTO	CODE	QTY.
	EF 000106	24
	EF 000266	24
	EF 000168	94
	EF 000033	20
	ROUND FEET	04
	EF 000061	02
	EF 000113	04
	EF 000132	24
	EF 000043	04
	EF 000027	04
	STICKER	24
	HANDLE	02
	PLASTIC PROFILE	01



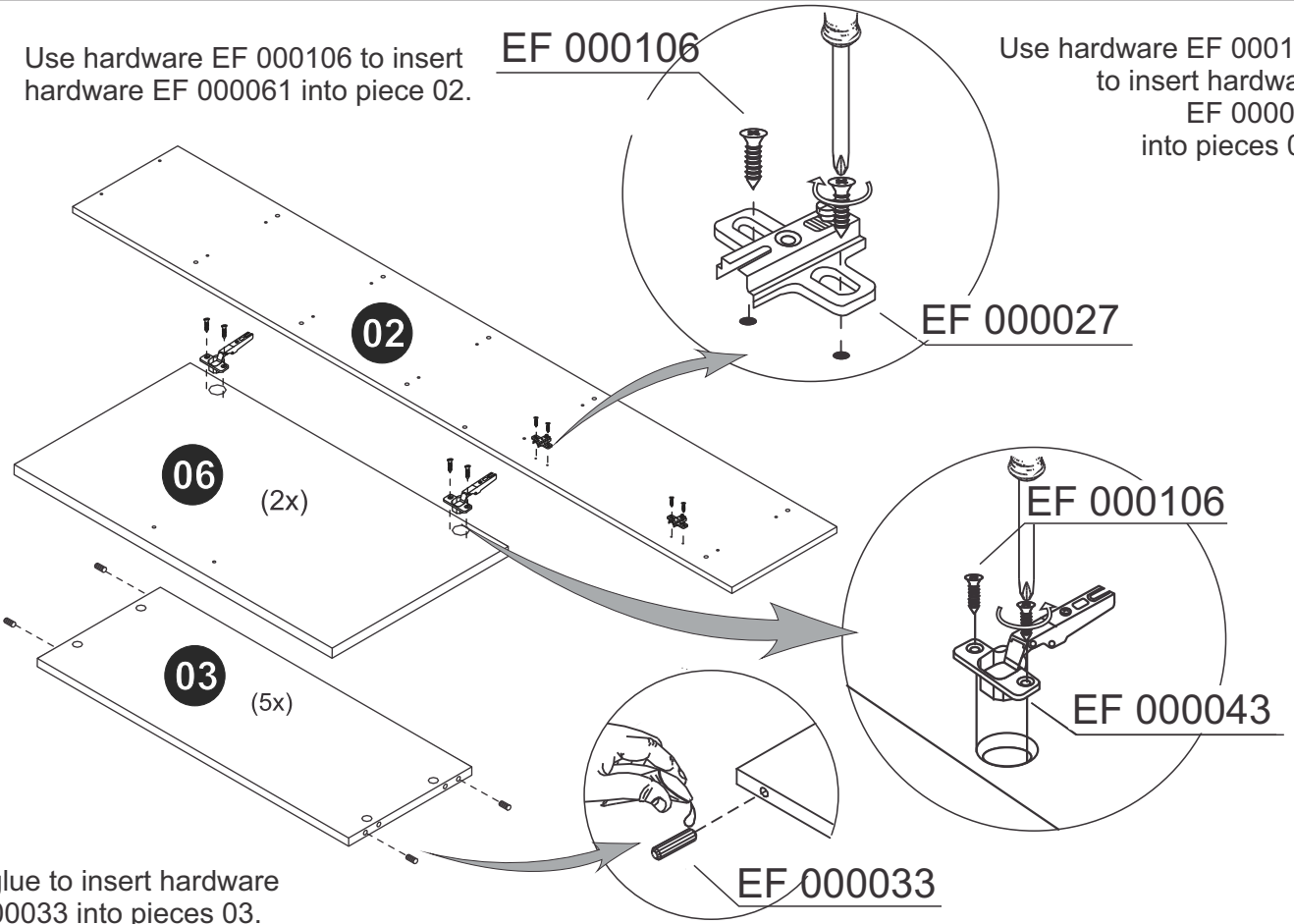
**TO IMPROVE ASSEMBLY, USE AN ELECTRONIC SCREWDRIVER**

# 1

Use hardware EF 000106 to insert hardware EF 000061 into piece 02.

EF 000106

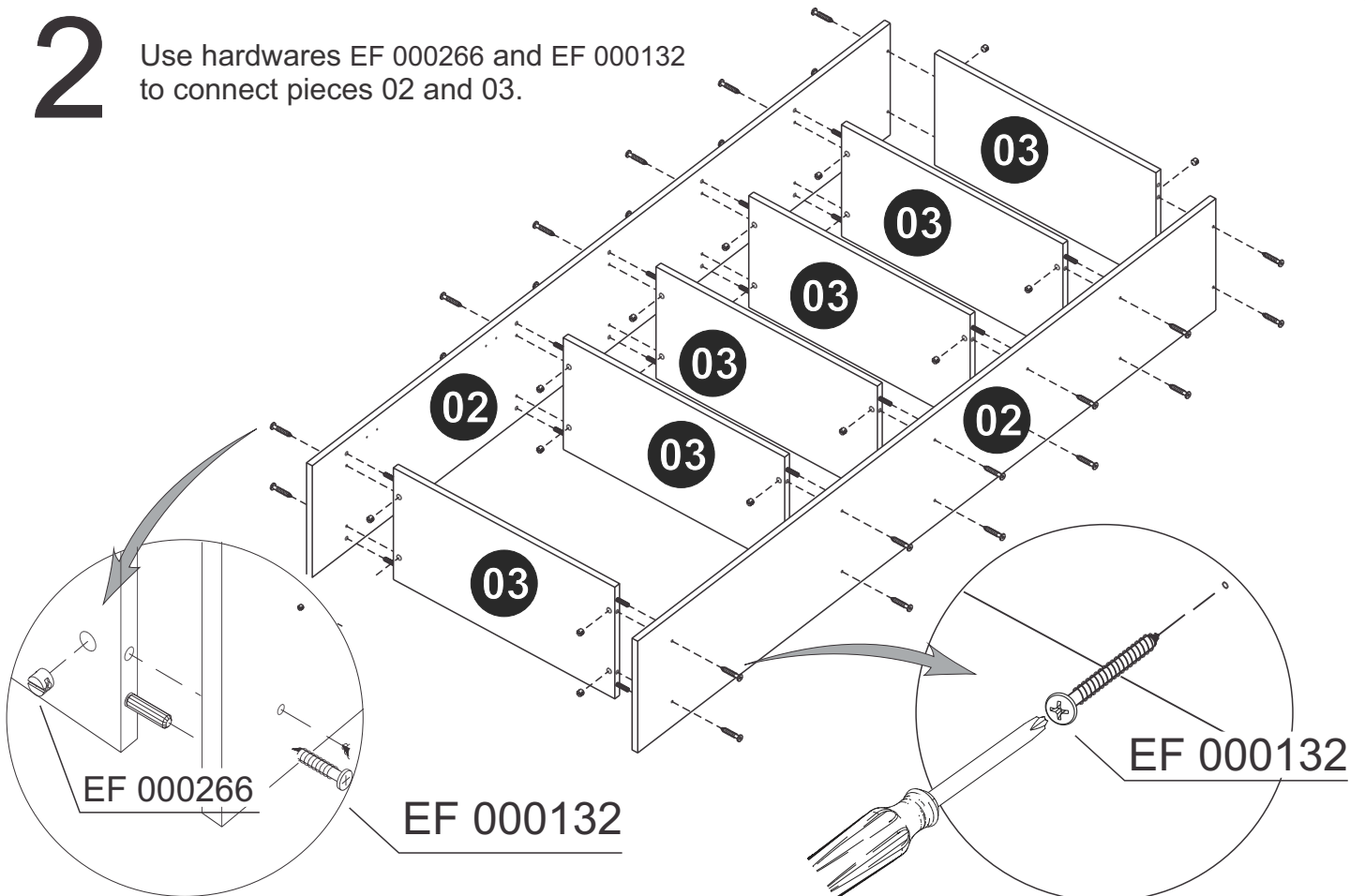
Use hardware EF 000106 to insert hardware EF 000043 into pieces 06.



Use glue to insert hardware EF 000033 into pieces 03.

# 2

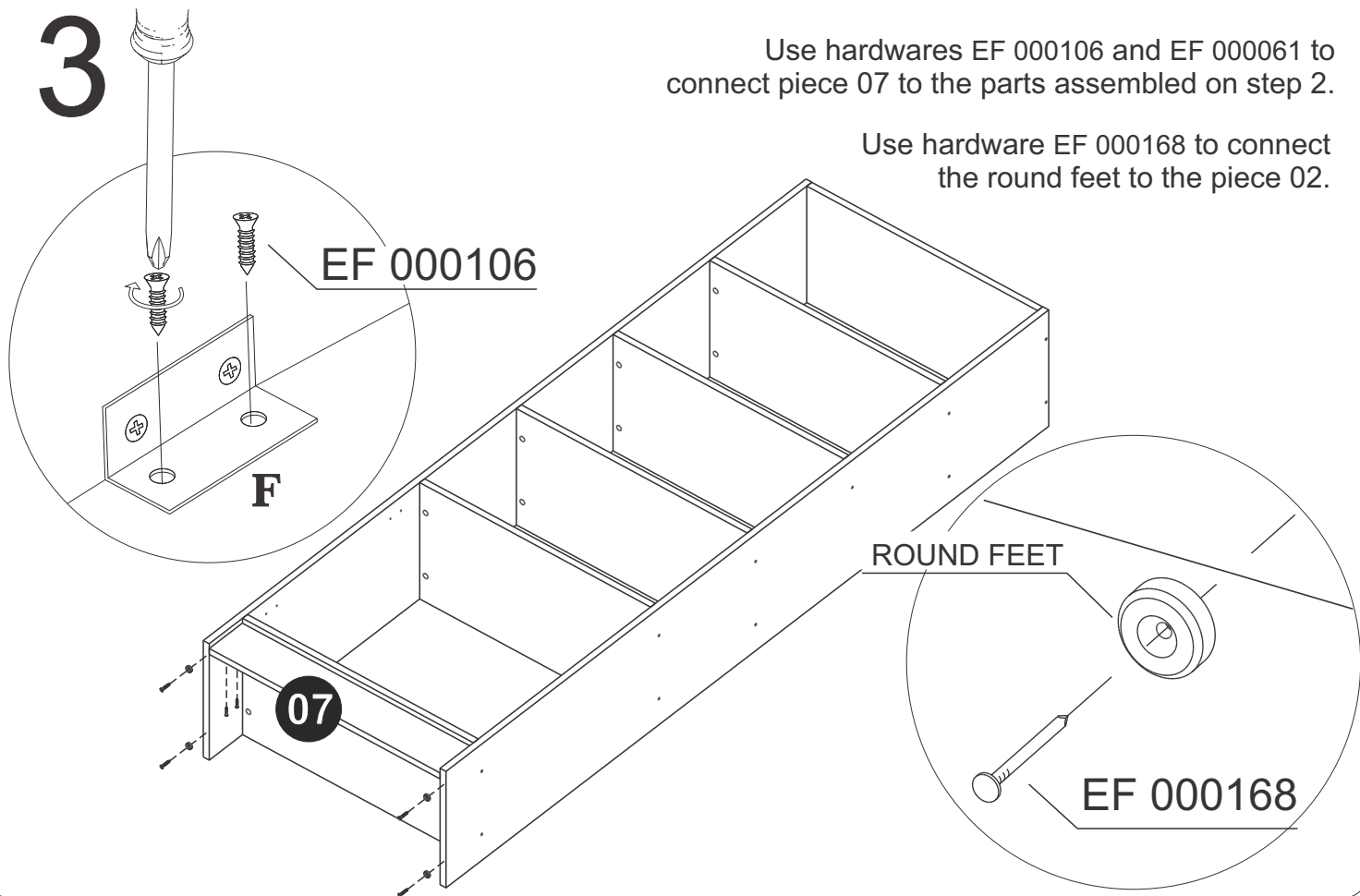
Use hardware EF 000266 and EF 000132 to connect pieces 02 and 03.



# 3

Use hardware EF 000106 and EF 000061 to connect piece 07 to the parts assembled on step 2.

Use hardware EF 000168 to connect the round feet to the piece 02.



# 4

Use hardware EF 000168 to connect pieces 04 to the part assembled on step 3.

HANDLE

